

MEDICAL GRADE TUBING

ACI offers a 1/4" diameter, flexible push-on medical grade tubing kit to be used in conjunction with the MLP, DLP, DBL and PUP Series pressure transmitters, switches and all pickup ports. The standard lengths of 10 Feet, 20 Feet, and 100 Feet are available and can be used with any 3/16" diameter barbed or non-barbed style fittings.

Applications: Indoor/Outdoor Weatherproof Pickup Port for Building Static Pressure Applications

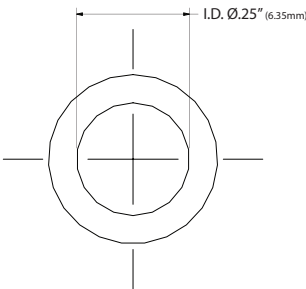
The Pick Up Port Series is covered by ACI's Five (5) Year Limited Warranty. The warranty can be found in the front of ACI's Sensors & Transmitters catalog, as well as on ACI's website, www.workaci.com.

PRODUCT SPECIFICATIONS	
Fitting Size Accepted:	3/16" (4.76 mm)
Maximum Operating Pressure:	65 psi maximum at 73°F (23°C)
Operating Temperature Range:	35° to 122°F (2° to 50°C)
Brittleness Temperature:	-25°F (-32°C)
Storage Temperature Range:	0 to 122°F (32° to 50°C)
Enclosure Material Flammability Rating:	Medical Grade Flexible PVC Self Extinguishing
Tubing Color:	Clear
Product Dimensions (ID x OD x L) Weight:	A/10' Tube: 1/8" (3.17mm) x 1/4" (6.35 mm) x 10' (3.05 m) / 0.30 lbs (0.136 kg) A/20' Tube: 1/8" (3.17mm) x 1/4" (6.35 mm) x 20' (6.10 m) / 0.50 lbs (0.226 kg) A/100' Tube: 1/8" (3.17mm) x 1/4" (6.35 mm) x 100' (30.5 m) / 2.3 lbs (1.05 kg)
Agency Approvals:	Complies with relevant section Title 21 of the Code of Fed. Reg., RoHS2, WEEE, Reach

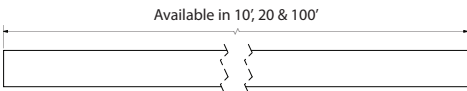




DIMENSIONAL DRAWING



Front View



Right View

STANDARD ORDERING

Model # Example: A/10'TUBE -OR- 126606

Model #	Item #	Description	Color
A/10' TUBE	126606	10' Medical Tubing Kit, 1/8" ID x 1/4" OD	Clear
A/20' TUBE	132226	20' Medical Tubing Kit, 1/8" ID x 1/4" OD	Clear
A/100' TUBE	136018	100' Medical Tubing Kit, 1/8" ID x 1/4" OD	Clear

