



RH DUCT

Relative Humidity, Duct

The ACI Relative Humidity Duct utilizes a thermoset polymer capacitive sensing element with a factory fitted hydrophobic filter to improve its moisture resistance. The sensing elements multilayer construction also provides excellent resistance in applications where dust, dirt, oils and common environmental chemicals are found. The RH duct sensors include on board DIP switches which allow the user to select the desired output signal and can be powered by AC or DC power sources. Each unit also contains 0%, 50%, and 100% test options to verify that the transmitter is both working and wired properly. Field calibration can be performed by using the increment and decrement calibration DIP switches without the need to replace the sensing

element. These enhancements provide increased flexibility and outstanding long-term reliability without the need to replace the sensors in the field. Duct configurations feature a weatherproof Euro style enclosure with a gasketed cover and conformally coated circuit boards for increased moisture resistance in high humidity environments. The sensor is protected by a stainless-steel sintered filter. Three and Five-point NIST Calibration Certificates are available and must be ordered separately when placing your order.

Applications: Humidification, Dehumidification, Supply / Discharge / Return Air, Economizers, Clean Rooms, Data Centers, Process Control, Schools, Hospitals, Office Buildings

The ACI RH Duct is covered by ACI's Five (5) Year Limited Warranty. The warranty can be found in the front of ACI's Sensors & Transmitters catalog, as well as on ACI's website, www.workaci.com.

PRODUCT SPECIFICATIONS

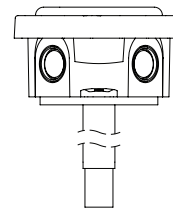
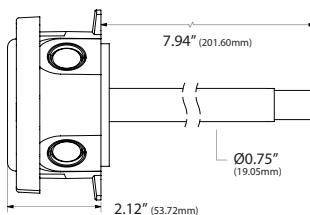
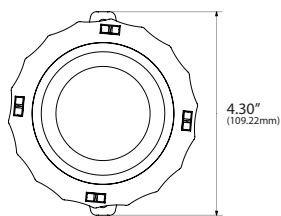
RH Supply Voltage (Reverse Polarity Protected):	4-20 mA: 250 Ohm Load: 15 - 40 VDC / 18 - 28 VAC 500 Ohm Load: 18 - 40 VDC / 18 - 28 VAC
RH Supply Current (VA):	0-5 VDC: 12 - 40 VDC / 18 - 28 VAC 0-10 VDC: 18 - 40 VDC / 18 - 28 VAC
RH Output Load Resistance:	Voltage Output: 8 mA maximum (0.32 VA) Current Output: 24 mA maximum (0.83 VA)
RH Output Signal:	4-20 mA: 700 Ohms maximum 0-5 VDC or 0-10 VDC: 4K Ohms Minimum
RH Accuracy @ 77°F (25°C):	2-wire: 4 - 20 mA (Factory Default) 3-wire: 0-5 or 0-10 VDC and 4 - 20 mA (Field Selectable)
RH Measurement Range:	+/- 1% over 20% RH Range between 20 to 90% +/- 2%, 3%, or 5% from 10 to 95%
Operating RH Range:	0-100%
Operating Temperature Range:	0 to 95% RH, non-condensing (Conformally Coated PCB's)
Storage Temperature Range:	-40 to 140°F (-40 to 60°C)
RH Stability Repeatability Sensitivity:	-40 to 149°F (-40 to 65°C)
RH Response Time (T63):	Less than 2% drift / 5 years 0.5% RH 0.1% RH
RH Sensor Type:	20 Seconds Typical
RH Transmitter Stabilization Time:	Capacitive with Hydrophobic Filter
RH Connections Wire Size:	30 Minutes (Recommended time before doing accuracy verification)
RH Terminal Block Torque Rating:	Screw Terminal Blocks (Polarity Sensitive) 16 (1.31 mm ²) to 26 AWG (0.129 mm ²)
RH NIST Test Points:	4.43 to 5.31 lb-in (0.5 to 0.6 Nm)
Enclosure Specifications (Material, Flammability, Temperature, NEMA/IP Rating):	Default Test Points: 3 Points (20%, 50% and 80%) or 5 Points (20%, 35%, 50%, 65% & 80%) 1% NIST Test Points: 5 Points within selected 20% Range (ie. 30%-50% are 30, 35, 40, 45 & 50)
Sensing Tube Material Filter Material:	"-EH" Enclosure: ABS Plastic; UL94-V0; -40 to 140°F (-40 to 60°C) "-4X" Enclosure: Polystyrene Plastic; UL94-V2; -40 to 158°F (-40 to 70°C); NEMA 4X (IP 66)
Sensing Tube Dimensions (Length x Diameter):	"EH" Enclosure: 304 Series Stainless Steel 304 Series Stainless Steel "-4X" Enclosure: Schedule 40 PVC (White) Slotted PVC without filter
Product Dimensions (L x W x D):	"-EH" Models with Sintered Filters: 7.75" (196.85 mm) x 0.75" (19.05 mm) "-4X" Models: 7.20" (182.88 mm) x 0.840" (21.34 mm)
Product Weight:	See drawings on back of data sheet
Agency Approvals:	A/RHx-D Series: 1.22 lbs. (0.55 kg) A/RHx-D-4X Series: 0.50 lbs. (0.227 kg) CE, RoHS2, WEEE



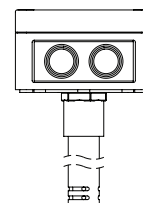
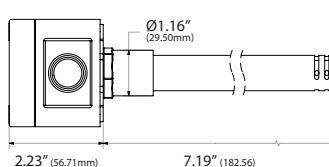
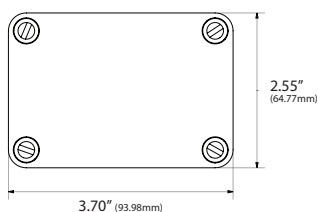


DIMENSIONAL DRAWING

Euro Enclosure [EH]



NEMA 4X Enclosure [4X]



Front View

Right View

Top View

STANDARD ORDERING

Model # Example: A/RH1-D -OR- 122531

Model #	Item #	Description
A/RH1-D	122531	RH Duct, +/- 1%, 4-20 mA Output (default), 0-5 VDC or 0-10 VDC (selectable), Euro Enclosure
A/RH2-D	122687	RH Duct, +/- 2%, 4-20 mA Output (default), 0-5 VDC or 0-10 VDC (selectable), Euro Enclosure
A/RH3-D	122931	RH Duct, +/- 3%, 4-20 mA Output (default), 0-5 VDC or 0-10 VDC (selectable), Euro Enclosure
A/RH5-D	123085	RH Duct, +/- 5%, 4-20 mA Output (default), 0-5 VDC or 0-10 VDC (selectable), Euro Enclosure
A/RH2-D-4X	122689	RH Duct, +/- 2%, 4-20 mA Output (default), 0-5 VDC or 0-10 VDC (selectable), NEMA 4X Enclosure
A/RH3-D-4X	122924	RH Duct, +/- 3%, 4-20 mA Output (default), 0-5 VDC or 0-10 VDC (selectable), NEMA 4X Enclosure

CUSTOM ORDERING

Model # Example:

A/ RH1 D 010
A. B. C. D.

MODEL

A. Sensor Series No Selection Required	A/	
B. Accuracy Select One (1)	RH1 = +/-1% (Specify a 20% Range between 20 to 90% RH) RH2 = +/-2% RH3 = +/-3% RH5 = +/-5%	
C. Configuration Select One (1)	D = Duct (Euro Enclosure) D-4X (NEMA 4X Enclosure)	
D. Output Signal Select One (1)	---- = 4 to 20 mA (Default) 010 = 0 to 10 VDC 05 = 0 to 5 VDC	

Note: Outputs are field selectable between 4-20 mA, 0-5 VDC & 0-10 VDC

ACCESSORIES ORDERING

Model # Example: A/SINTERED FILTER

Model #	Item #	Description
A/SINTERED FILTER	143433	3/8" Sintered Filter for RH Duct/Stainless Plate/Remote Probe

ACCESSORIES ORDERING [NIST]

Model # Example: NIST RH CERT

Model #	Description
NIST RH CERT	RH Calibration Certificate (Specify 3 Point or 5 Point NIST)

Note: When ordering NIST certificates, please add an additional line item under the corresponding A/RHx-D Model Number