

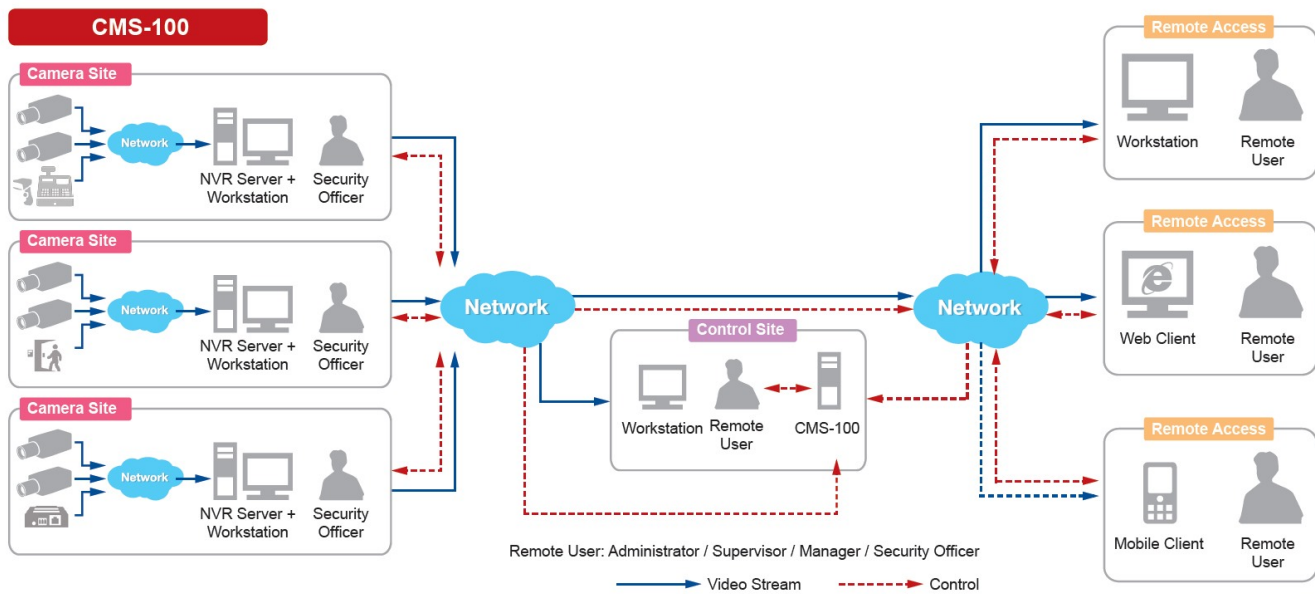
# CMS-100

## 800-Channel Mini Standalone CMS



- Maximum Number of Video Devices: 800
- Free License: 100
- Event trigger, response and notification
- Workstation, Web Client, Mobile Client
- Location-based management with e-Map

### ► Solution Diagram



### ► Specifications

#### Device

Product Type	Standalone CMS
--------------	----------------

Maximum Resolution	Support all ACTi cameras in all resolutions
Maximum Number of Video Devices	800
Maximum Number of Clients	Local: 1, Remote: 5

**Hardware**

CPU	Intel Core i7-6700TE
RAM	8GB

**License**

License required	Yes
Free License	100

**Live View**

Display Layout Mode	1, 4, 5, 6, 8, 9, 10, 12, 16, 18, 24, 25, 35, 36, 48, 49, 64, Custom
Fisheye Dewarping	Yes
Maximum display layout	64
Local Live View performance	Please check "Standalone NVR Performance Validator" ( <a href="http://www.acti.com/SANVRPerformance">http://www.acti.com/SANVRPerformance</a> )
Digital Zoom	Yes
Event Status	Display event status upon alarm or upon connection loss or recovery between server and client or when the allocated disk space is full
Instant Playback	Instant Playback in live view window

**Map**

e-Map	Yes
Layout	Area maps with camera icons, small live view windows, view linker, source linker, event trigger
Setup	e-Map image upload, camera positioning, vision angle and pointed direction of camera, view positioning, source positioning, extended devices for Point-of-sale (POS), Access Control, Network I/O, Car Park
PTZ Mode	Mouse PTZ mode to control e-Map video streams

**PTZ**

PTZ Control	PTZ Control, Speed Control
Joystick	USB based joystick supported

**Video**

Compression	H.265, H.264 (Baseline/ Main/ High profile), MJPEG, MPEG-4
-------------	--

**Audio**

Audio Type	2-way, Mic-in, Line-out
------------	-------------------------

**Network**

Network Protocol & Service	IPv4/v6, TCP, UDP, DHCP Client, HTTP, DNS, NTP, RTP, RTSP, SMTP, FTP, ICMP, ARP, UPnP, LDAP (client)
Ethernet Port	2 x Ethernet (1000 Base-T), RJ-45 connector

**Recording**

Manual Recording	Yes
Dual Stream Management	Yes

**Search & Playback**

Playback Control	Continuous forward and backward playback with speeds 1x/2x/4x/8x/16x or frame-by-frame, pause, stop
Synchronized Playback	9 channels (Local), 64 channels (Remote)
Smart Search	Smart search of recorded video by Motion Detection and Tamper

**Event**

Event Trigger	Source loss and recovery, Schedule service start and stop, Disk full, Disk not found, Disk is available, Video motion detection, Passive IR sensor, External device through digital input, Sound detection, Video loss, Video Recovery, Network loss and recovery, Point-of-sale (POS) status, Network I/O status, Access Control status
Event Response	NVR:, Play alert sound, Execute system command to activate other programs, E-mail notification with snapshots, Device:, Pop-up window with live video, Switch to hotspot window, Switch to customize view, Play alert sound, Send video to TV Wall server

**System**

Permission control	Unlimited number of users, Active Directory, Customizable permissions for user groups, Playback password protected
Client PC Operating System	Windows 7 SP1, Windows 8.1, Windows 10, Windows Server 2008 R2 SP1, Windows Server 2012 R2, Windows Server 2016
Server Operating System	Windows 7 Embedded, Windows 10 IoT (Optional)
Mobile Client Program	Mobile device application (ACTi Mobile Client) supports Live View, PTZ Control, Event/time based search and playback, Supported device(s) iOS, Android device
USB	6-Port USB 3.0
Language	Multi-Language

**Integration**

Unified Solution	Fully compatible with ACTi cameras, encoders, central management system, TV wall and intelligent video surveillance software
ONVIF Compliant	Yes, Profile S
Web Browser	IE 11 (Please verify that your computer meets the minimum system requirements for Internet Explorer from Microsoft website.)
Third-party Integration	Point of Sale (POS), Access Control, Network I/O, Parking Management Station (PMS), (Various optional integrations requiring additional license)

**Storage**

System Drive	SSD, 128GB
Storage Bay	SATA, Max. 1 Disk(s) (without storage disks)
HDD Size	3.5"

**Interface**

Serial Port	2 x RS-232
External Storage Interface	USB
Local Access	USB keyboard & mouse

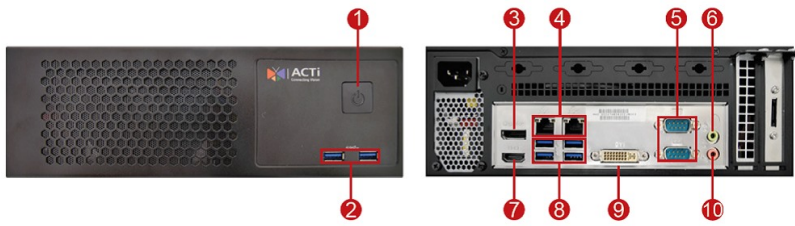
Local Display Interface

HDMI x 1, DVI x 1, Display Port x 1

**General**

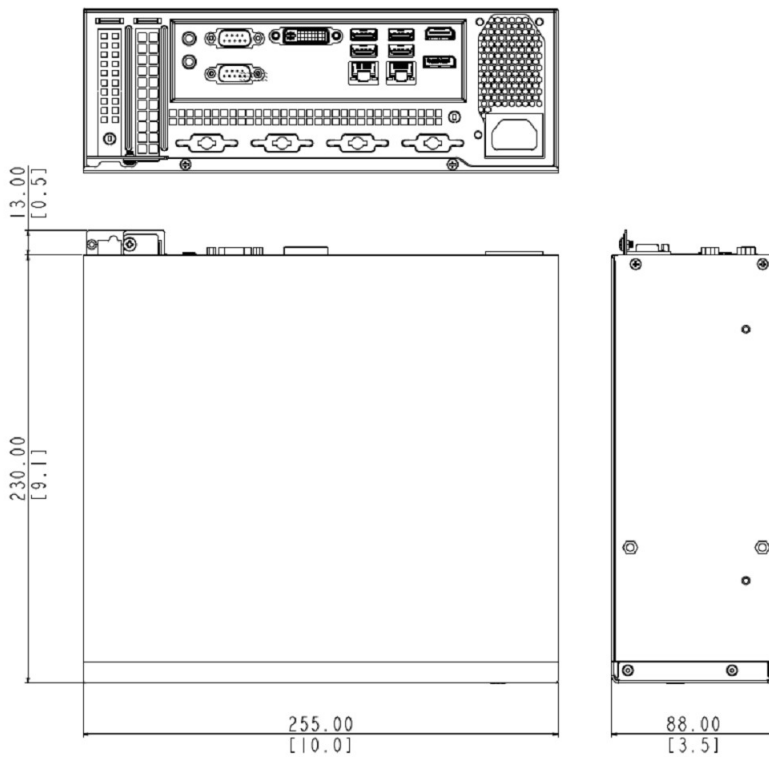
Power Source	AC 100-240V
Weight	3279g (7.229lb)
Dimensions	(W x H x D): 255mm x 88mm x 230mm (10" x 3.5" x 9.1")
Fan	Yes
Operating Temperature	0°C ~ 40°C (32°F ~ 104°F)
Operating Humidity	10% - 85% RH
Remote Access	Workstation, Web Client, Mobile Client
Approvals	CE, FCC, UL (for built-in power adapter)
Warranty	3 Year(s). For extended warranty offering, see <a href="http://www.acti.com/support/warranty">http://www.acti.com/support/warranty</a>

## ▶ Photo Indication



- 1 Power Button
- 2 USB 3.0 Port
- 3 Display Port
- 4 Ethernet Port
- 5 Serial Port
- 6 Audio Line-out
- 7 HDMI Port
- 8 USB 3.0 Port
- 9 DVI Port
- 10 Audio Mic-in

## ▶ Dimension Diagram



Unit: mm [inch]