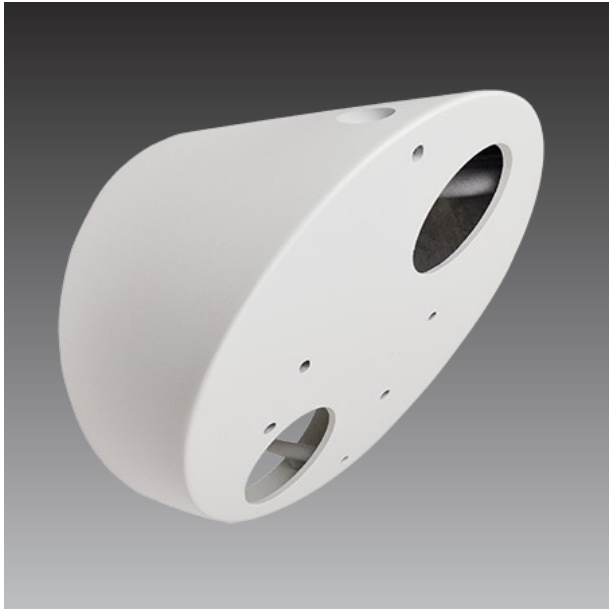


# PMAX-0338



35-Degree Tilted Wall Mount for Fisheye and Hemispheric Cameras

## ► Specifications

### Device

Product Type	Camera Mount
Application Environment	Indoor/Outdoor
Description	35-Degree Tilted Wall Mount for Fisheye and Hemispheric Cameras






### General

Weight	421.5g (0.929lb)
Material	Aluminum
Warranty	1 Year(s)
Tilted Angle	35°

## ► Related Products

### Dome - Hemispheric Dome

B511A	 <p>12MP Video Analytics Indoor Hemispheric Dome with D/N, Adaptive IR, Extreme WDR, SLLS, Fixed lens, f1.65mm/F2.8 (HOV:198.5° (overview area), 121.1° (high detail area)), H.264, Dewarping, 2D+3D DNR, Built-in Microphone, MicroSDHC/MicroSDXC, PoE/DC12V, DI/DO, Built-in Analytics</p>
-------	---

B57A		6MP Video Analytics Indoor Hemispheric Dome with D/N, Adaptive IR, Extreme WDR, SLLS, Fixed lens, f1.65mm/F2.8 (HOV:198.5° (overview area), 121.1° (high detail area)), H.264, Dewarping, 2D+3D DNR, Built-in Microphone, MicroSDHC/MicroSDXC, PoE/DC12V, DI/DO, Built-in Analytics
I51		5MP Indoor Hemispheric Dome with D/N, Advanced WDR, SLLS, Fixed lens, f1.05mm/F2.8 (HOV:180° (overview area), 109.8° (high detail area)), H.264, Dewarping, 2D+3D DNR, Audio, MicroSDHC/MicroSDXC, PoE/DC12V, DI/DO
Q51		2MP Heat Map Indoor Hemispheric Dome with D/N, Adaptive IR, Extreme WDR, SLLS, Fixed lens, f1.3mm/F2.6 (HOV:171°), H.264, Dewarping, 2D+3D DNR, Built-in Microphone, MicroSDHC/MicroSDXC, PoE/DC12V, DI/DO, Built-in Analytics
B76A		12MP Video Analytics Outdoor Hemispheric Dome with D/N, Adaptive IR, Extreme WDR, SLLS, Fixed lens, f1.65mm/F2.8 (HOV:198.5° (overview area), 121.1° (high detail area)), H.264, Dewarping, 2D+3D DNR, Built-in Microphone, MicroSDHC/MicroSDXC, PoE/DC12V, IP68, IK10, DI/DO, Built-in Analytics
B78		12MP Video Analytics Outdoor Hemispheric Dome with D/N, Adaptive IR, Extreme WDR, SLLS, Fixed lens, f1.65mm/F2.8 (HOV:198.5° (overview area), 121.1° (high detail area)), H.265/H.264, Dewarping, 2D+3D DNR, Built-in Microphone, MicroSDHC/MicroSDXC, PoE/DC12V, IP68, IK10, DI/DO, Built-in Analytics