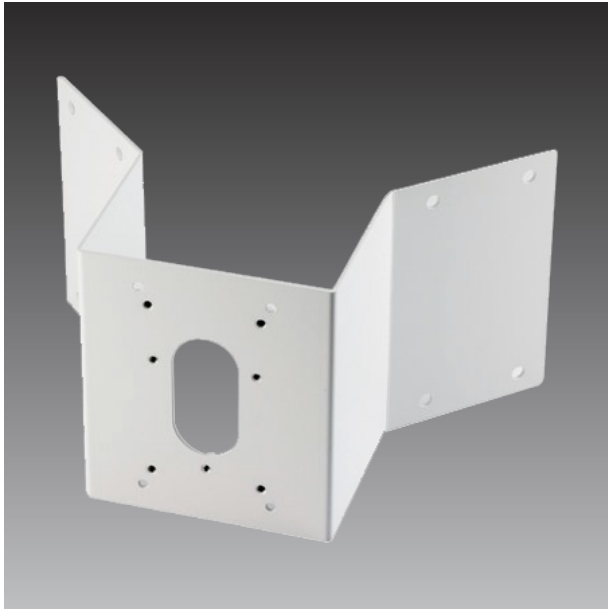


# PMAX-0402



Corner Mount

## ► Specifications

### Device

Product Type	Camera Mount
Application Environment	Indoor/Outdoor
Description	Corner Mount

### General

Weight	808g (1.78lb)
Dimensions	(W x H x D): 330mm x 206mm x 206mm (13.0" x 8.12" x 8.12")
Material	Aluminum
Color	Warm Gray
Warranty	1 Year(s). For extended warranty offering, see <a href="http://www.acti.com/support/warranty">http://www.acti.com/support/warranty</a>

## ► Ordering Information

SMAX-0011	Corner Mount with Gooseneck and Extension Tube for Outdoor PTZ / Speed Dome (except KCM-8211 & TCM-6630) (PMAX-0402 + PMAX-0303 + PMAX-0104)
SMAX-0013	Corner Mount with Gooseneck, Extension Tube and Mount Kit for all Dome Cameras (except Mini Domes) (PMAX-0402 + PMAX-0303 + PMAX-0104 + PMAX-0101)

SMAX-0157	Corner Mount with Heavy Duty Wall Mount for B8x, B9x, D7x, D8x, E7x [except E78], E8x, I7x, KCM-7911 (PMAX-0402 + PMAX-0314)
SMAX-0385	Wall mount with Converter Ring and Cornerr mount (for Q75) (PMAX-0345+PMAX-0402)
SMAX-0386	Wall mount with Converter Ring and Cornerr mount, Junction box (for Q75) (PMAX-0345+PMAX-0402+PMAX-0702)
SMAX-0388	Gooseneck with Converter Ring and Corner mount (for Q75) (PMAX-0344+PMAX-0402)
SMAX-0389	Gooseneck with Converter Ring and Corner mount, Junction box (for Q75) (PMAX-0344+PMAX-0402+PMAX-0702)
SMAX-0391	Gooseneck with Converter Ring and Corner mount, Extension Tube (for Q75) (PMAX-0344+PMAX-0104+ PMAX-0402)
SMAX-0392	Gooseneck with Converter Ring and Corner mount, Extension Tube, Junction box (for Q75) (PMAX-0344+PMAX-0104+ PMAX-0402+PMAX-0702)