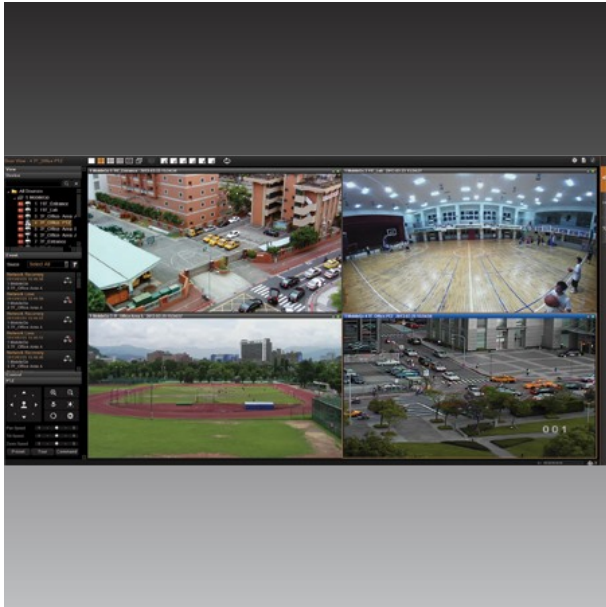


# CMS 2

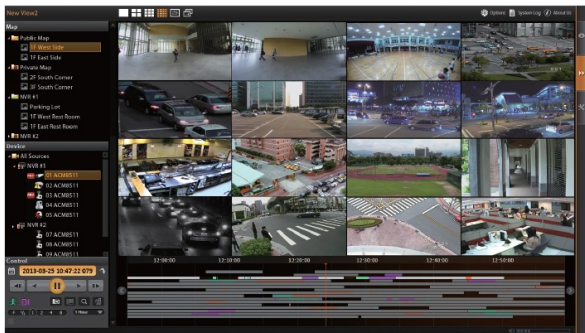
## 6400-Channel Software CMS



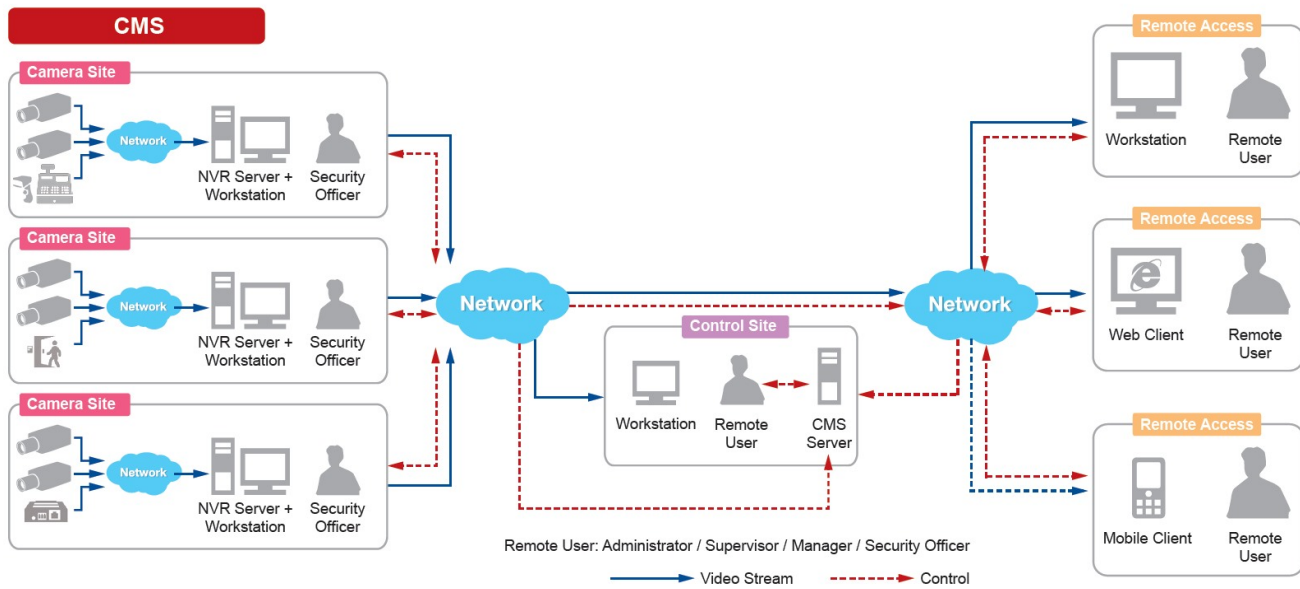
- Maximum Number of Video Devices: 6400
- Free License: 2
- Event trigger, response and notification
- Workstation, Web Client, Mobile Client
- Video export formats: RAW, AVI, EXE
- Location-based management with e-Map

### Up to 64-channel synchronized playback

### Mobile client (iOS, Android) access



## ► Solution Diagram



## ► Specifications

### Device

Product Type	Software CMS
Maximum Resolution	Support all ACTi cameras in all resolutions
Maximum Number of Video Devices	6400
Maximum Number of POS devices	6400 (requires additional license)
Maximum Number of Access Control and Network I/O devices	6400 (requires additional license)
Maximum Number of Clients	Local: 1, Remote: Unlimited, (recommended up to 5)

### Hardware

System Requirements	CPU: Intel Core i7-4770S or better RAM: 8GB or better Operating System: Windows 7 (or newer) - ACTi offering standalone models: CMS-100, CMS-200, CMS-400, CMS-401
---------------------	--

### License

License required	Yes
Free License	2

### Live View

Display Layout Mode	1, 3, 4, 5, 6, 8, 9, 10, 12, 16, 18, 24, 25, 35, 36, 48, 49, 64, Custom
Fisheye Dewarping	Yes
Digital Zoom	Yes

Event Status	Display event status upon alarm or upon connection loss or recovery between server and client or when the allocated disk space is full
Instant Playback	Instant Playback in live view window
Embedded websites in Live View	Display and connect to pre-configured embedded website

## Map

e-Map	Yes
Layout	Area maps with camera icons, small live view windows, view linker, source linker, event trigger
Setup	e-Map image upload, camera positioning, vision angle and pointed direction of camera, view positioning, source positioning, extended devices for Point-of-sale (POS), Access Control, Network I/O, Car Park
PTZ Mode	Mouse PTZ mode to control e-Map video streams

## PTZ

PTZ Control	PTZ Control, Speed Control
Joystick	USB based joystick supported

## Video

Compression	H.265, H.264, MPEG-4, MJPEG
-------------	-----------------------------

## Network

Network Protocol & Service	IPv4/v6, TCP, UDP, DHCP Client, HTTP, DNS, NTP, RTP, RTSP, SMTP, FTP, ICMP, ARP, UPnP, iSCSI, LDAP (client)
----------------------------	---

## Recording

Manual Recording	Yes
Dual Stream Management	Yes

## Search & Playback

Playback Control	Continuous forward and backward playback with speeds 1x/2x/4x/8x/16x or frame-by-frame, pause, stop
Synchronized Playback	64 channels
Recording Search	Search video recordings by time, events, channels, bookmarks, notifications and listed as clickable time-based thumbnails for full-size view and snapshot download
Video Export	RAW, AVI, EXE

## Event

Video Push	Support Video Push from ACTi Mobile Client devices
Event Trigger	Source loss and recovery, Disk full, Disk not found, Disk is available, Schedule service start and stop, Video motion detection, Passive IR sensor, External device through digital input, Sound detection, Video loss, Video Recovery, Network loss and recovery, Point-of-sale (POS) status, Network I/O status, Access Control status, Car park status,
Event Response	NVR:, Play alert sound, Execute system command to activate other programs, E-mail notification with snapshots, Device:, Pop-up window with live video, Switch to hotspot window, Switch to customize view, Play alert sound, Send video to TV Wall server

**System**

Permission control	Unlimited number of users, Active Directory, Customizable permissions for user groups, Account lockout, Automatic logout after idle, Playback password protected, Password validity period
Client PC Operating System	Windows 7 SP1, Windows 8.1, Windows 10, Windows Server 2008 R2 SP1, Windows Server 2012 R2, Windows Server 2016
Server Operating System	Windows 7 SP1, Windows 8.1, Windows 10, Windows Server 2008 R2 SP1, Windows Server 2012 R2, Windows Server 2016
Mobile Client Program	Mobile device application (ACTi Mobile Client) supports Live View, PTZ Control, Video Push, Event/time based search and playback, iPad, Android device
Language	Multi-Language

**Integration**

Unified Solution	Fully compatible with ACTi cameras, encoders, central management system and TV wall
GPS Position	Manual setting
ONVIF Compliant	Yes
Web Browser	IE 11 (Please verify that your computer meets the minimum system requirements for Internet Explorer from Microsoft website.)
Third-party Integration	Point of Sale (POS), Access Control, Network I/O, Parking Management Station (PMS), (Various optional integrations requiring additional license)

**Interface**

Local Access	Monitor, Joystick, Keyboard & mouse
--------------	-------------------------------------

**General**

Remote Access	Workstation, Web Client, Mobile Client
---------------	--

**► Ordering Information**

CMS-100	800-Channel 1-Bay Mini Standalone CMS with 64-channel display layout, e-Map, HDMI, DVI and Display port, Remote Access, Video Export, 64-Channel Synchronized Playback, 100-channel free license included, 1-Bay (Storage Disks not included), Audio, AC 100-240V
CMS-200	6400-Channel 1-Bay Rackmount Standalone CMS with 64-channel display layout, e-Map, DVI, VGA and Display port, Remote Access, Video Export, 64-Channel Synchronized Playback, 200-channel free license included, 1-Bay (Storage Disks not included), Audio, AC 100-240V
LCMS2000	The license is for channel to work on CMS 2. The number of add-on channels supported: 1-6398. Price listed is for single channel add-on license. CMS 2: The Central Management System managing unlimited NVR servers, providing Live view and Playback up to 64 channels; Smart Search; Export video; Event management; e-Map; free license for 2-channel ACTi NVR servers included.
LEXD2000	The license is for network I/O or access control extended device to work on CMS 2. No. of add-on devices supported: 1-6400. Price listed is for single device add-on license. CMS 2: The Central Management System managing unlimited NVR servers, providing Live view and Playback up to 64 channels; Smart Search; Export video; Event management; e-Map; free license for 2-channel ACTi NVR servers included.

LPOS2000

The license is for POS device to work on CMS 2. No. of add-on devices supported: 1-6400. Price listed is for single device add-on license. CMS 2: The Central Management System managing unlimited NVR servers, providing Live view and Playback up to 64 channels; Smart Search; Export video; Event management; e-Map; free license for 2-channel ACTi NVR servers included.