



## Features & Options

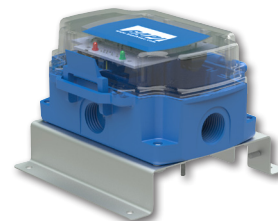
- Detection Within 5 Seconds with Local LED Alarm Indication
- 5 Amp or 0.5 Amp Relays @ 30VAC/DC
- One Piece, Rope or Remote Sensor Design
- NEMA 4 Enclosure

The Water Leak Detector is designed to sense the presence of water and alert a central monitoring system of the potentially destructive situation. Upon water detection, the alarm relays change state, and a local red LED illuminates. The transmitter can be set for latching or non-latching alarm, and normally energized or normally de-energized operation.

Detector with Remote Sensor



Detector with Attached Sensor



Detector with Rope Sensor



## Specifications

**Power:** 24VAC/VDC +/- 10%  
 5 Amp Relays: 4 Watt/ 4 VA max  
 0.5 Amp Relays: 2 Watt/ 2 VA max (not intended to switch a load)

**Wiring:** Flex Connector or Liquid Tight Fitting  
 Relays.....Up to 6 wires for Alarm Contacts  
 Transmitter .....2 wires for Power

### Sensor:

Attached .....SS probe w/ adjustable depth screw from 0.063 to 0.84"  
 Remote ..... Sensor w/ adjustable depth from 0.062 to 0.5", Mounts to pan with industrial adhesive tape or 0.172" mounting holes  
 Rope ..... Long Line Wire Sensor, Plenum Rated.  
 Detects 1/8" of water over the full length.

### Alarm Contacts :

LDT1:..... One SPST, 0.5A relay output, 10W max.  
 LDT2:..... Two SPST, 0.5A relay outputs, 10W max.  
 LDT3: ..... One SPDT, 5A relay output  
 LDT4:..... Two SPDT, 5A relay outputs

**Indication:** 1 Green Power LED, 1 Red Alarm LED

**Reset Action:** If latching, local pushbutton or power interrupt

**Termination:** Terminal Strip, 12 to 24 AWG

### Latching and Supervised Relay Options:

Latching..... Relay stays in alarm until manually reset or power is cycled  
 Non-Latching.. Relay automatically resets after water is removed (default)  
 Unsupervised.. Relay energizes on water detection  
 Supervised..... Relay de-energizes on water detection (default)  
 Note: Relay de-energizes on loss of power

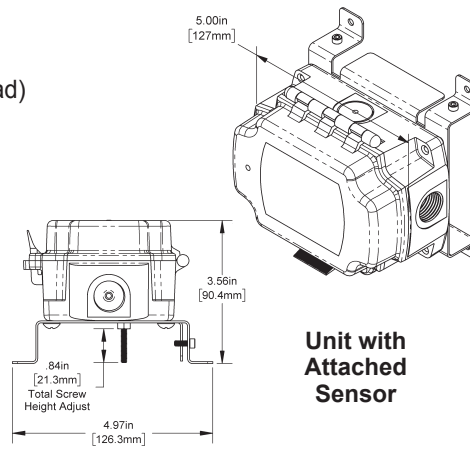
### Enclosure Ratings:

Remote Sensor.. Submersible, with FEP plenum-rated, waterproof cable  
 Detector..... BAPI-Box, NEMA 4 Polycarbonate Enclosure

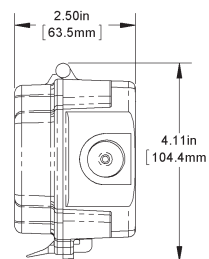
### Ambient:

Remote Sensor..... -40 to 185°F (-40 to 85°C), 0 to 100%RH, Condensing  
 Rope Sensor..... 32 to 167°F (0 to 75°C), 0 to 95%RH, Non-condensing  
 Detector (BB)..... -40 to 185°F (-40 to 85°C), 0 to 95%RH, Non-condensing

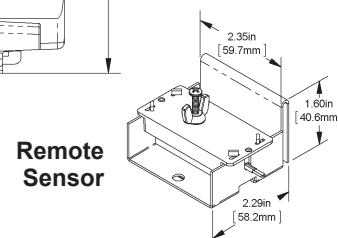
**Agency:** RoHS, UL94V-0 , UV-rated in Enclosure



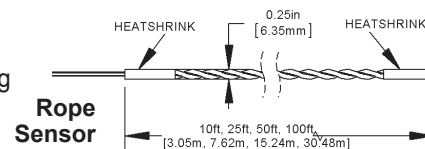
Unit with Attached Sensor



Unit with Remote or Rope Sensor



Remote Sensor



Rope Sensor





### Water Leak Detector Option Selection Guide

BA/ ( #1 ) - ( #2 ) - ( #3 )

**#1: Leak Detector Transmitter** (required)

- LDT1..... Water leak detector transmitter w/ one 0.5A SPST contacts
- LDT2..... Water leak detector transmitter w/ two 0.5A SPST contacts
- LDT3..... Water leak detector transmitter w/ one SPDT 5A contacts
- LDT4..... Water leak detector transmitter w/ two SPDT 5A contacts

**#2: Probe Sensor** (required)

- PS..... Probe Sensor built into the enclosure
- RS5..... Remote Spot Sensor with 5 foot FEP cable
- RS10..... Remote Spot Sensor with 10 foot FEP cable
- RS25..... Remote Spot Sensor with 25 foot FEP cable
- RR10 ..... Remote Rope Sensor with 10 foot Plenum Rated Sensor Cable
- RR25 ..... Remote Rope Sensor with 25 foot Plenum Rated Sensor Cable
- RR50 ..... Remote Rope Sensor with 50 foot Plenum Rated Sensor Cable
- RR100 ..... Remote Rope Sensor with 100 foot Plenum Rated Sensor Cable

**#3: Enclosure and Fitting Options** (required)

- BB..... BAPI-Box enclosure, IP66 rated
- BB-LTF ..... BAPI-Box enclosure, IP66 rated, w/ Liquid tight fitting
- BB-GFF ..... BAPI-Box enclosure, IP66 rated, w/ flex connector

*Submittal sheets without List Prices can be downloaded from our website at [www.bapihvac.com](http://www.bapihvac.com)*

**Example Number:** BA/ ( **LDT1** ) - ( **RR10** ) - ( **BB** )

**Actual Number (with parenthesis removed):** BA/LDT1-RR10-BB

**Description:** Detector with one 0.5A contact, 10' Remote Rope Sensor and BAPI-Box Enclosure

**Your Number:** BA/

### Replacement Remote Spot or Remote Rope Sensors

For use as updates to existing systems or built-in (-PS) probe Sensors

**Sensor Type**

- BA/RS5..... Remote Spot Water Sensor with 5 foot FEP cable
- BA/RS10..... Remote Spot Water Sensor with 10 foot FEP cable
- BA/RS25..... Remote Spot Water Sensor with 25 foot FEP cable
- BA/RR10..... Remote Rope Sensor with 10 foot Plenum Rated Sensor Cable
- BA/RR25..... Remote Rope Sensor with 25 foot Plenum Rated Sensor Cable
- BA/RR50..... Remote Rope Sensor with 50 foot Plenum Rated Sensor Cable
- BA/RR100..... Remote Rope Sensor with 100 foot Plenum Rated Sensor Cable

**Your Number:** BA/

