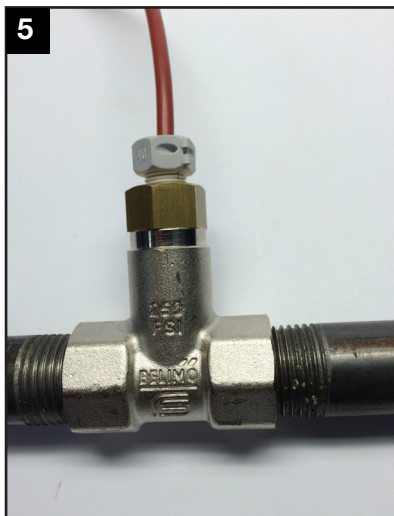
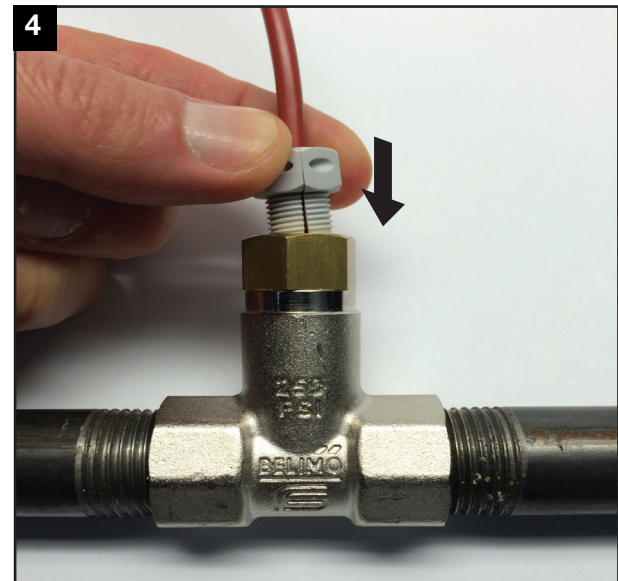
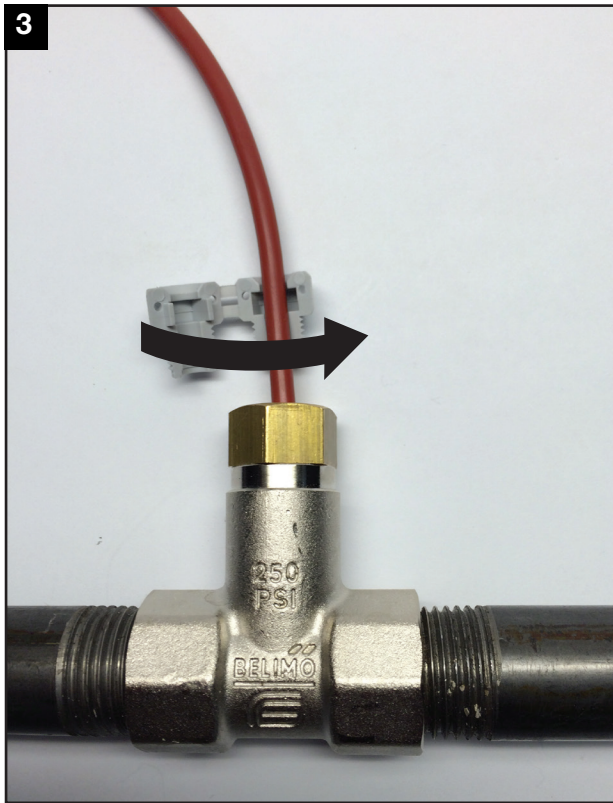
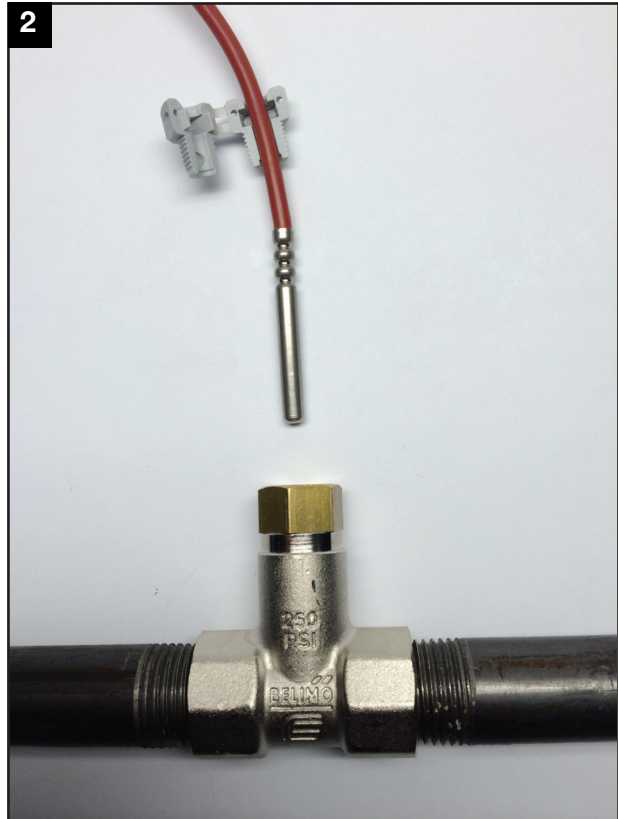
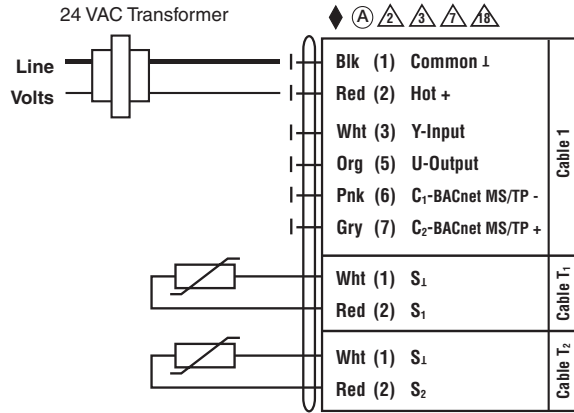


Energy Valve Temperature Sensor and Fitting



Energy Valve Temperature Sensor and Fitting

WIRING DIAGRAM



W1356_Water

Notes:

- ◆ Meets cULus requirements without the need of an electrical ground connection
- Ⓐ Actuators with appliance cables are numbered.
- Ⓐ Actuators may be connected in parallel. Power consumption and input impedance must be observed.
- Ⓐ Actuators may also be powered by 24 VDC.
- Ⓐ A 500 Ω resistor converts the 4 to 20 mA control signal to 2 to 10 VDC.
- Ⓐ Actuators with plenum rated cable do not have numbers on wires; use color codes instead.

GRY
Gray
Gris
Gris
Cinza

ORG
Orange
Anaranjado
Orange
Alaranjado

PNK
Pink
Rosado
Rosa
Cor-de ros

WHT
White
Blanco
Blanc
Branco

RED
Red
Rojo
Rouge
Vermelho

BLK
Black
Negro
Noir
Preto