

F6150HDU, 6", 2-Way Butterfly Valve

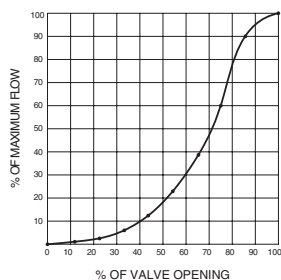
Resilient Seat, 304 Stainless Steel Disc



Technical Data

Media	chilled, hot water, up to 60% glycol
Flow characteristic	modified equal percentage
Controllable flow range	90° rotation
Valve Size	6 " [150]
Type of End Fitting	for use with ANSI class 125/150 flanges
Housing	ductile iron ASTM A536
Surface treatment	epoxy powder coated
Stem seal	EPDM (lubricated)
Seat	EPDM
Stem	416 stainless steel
Bearing	RPTFE
Disc	304 stainless steel
Body Pressure Rating	232 psi CWP
ANSI Class	Consistent with 125
Number of Bolt Holes	8
Lug threads	3/4-10 UNC
Close-Off Pressure	50 psi
Rangeability Sv	10:1 (for 30° to 70° range)
Maximum Velocity	12 FPS
Cv	1579
Weight	19 lb [8.6 kg]
Leakage rate	0%
Maintenance	maintenance free

Flow Pattern



Application

Valve is designed for use in ANSI flanged piping systems to meet the needs of bi-directional high flow HVAC hydronic applications with 0% leakage. Typical applications include cooling tower bypass, primary flow change-over systems, and large air handler coil control. Valve face-to-face dimensions comply with API 609 & MSS-SP-67, Completely assembled and tested, Ready for installation.

Jobsite Note

Valve assembly should be stored in a weather protected area prior to installation. Reference the butterfly valve installation instruction for additional information.

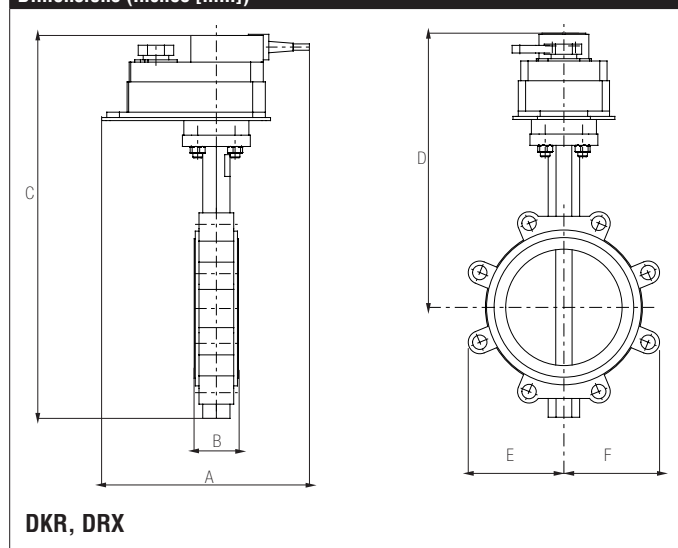
Flow/Cv

Cv 10°	Cv 20°	Cv 30°	Cv 40°	Cv 50°	Cv 60°	Cv 70°	Cv 80°	Cv 90°
0.8	45	95	205	366	605	958	1437	1579

Suitable Actuators

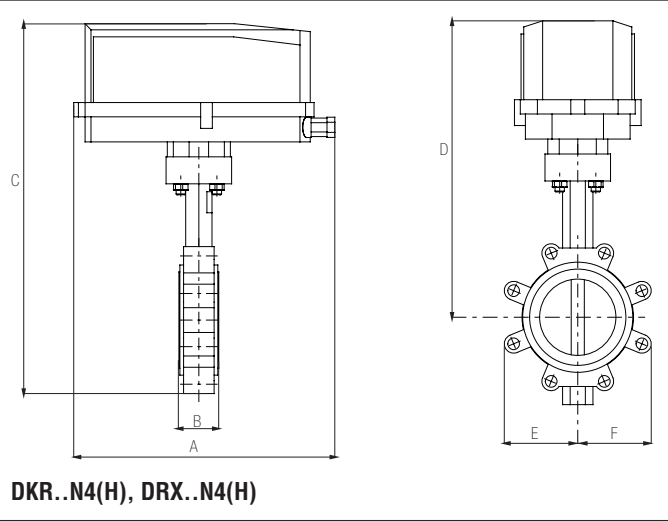
	Non-Spring
F6150HDU	DRB(X)

Dimensions (Inches [mm])



A	B	C	D	E	F
8.5" [216]	2.21" [56.1]	19.31" [490]	14.30" [363]	5" [127]	

Dimensions (Inches [mm])



A	B	C	D	E	F
14.1" [358]	2.21" [56.1]	21.38" [544]	16.07" [408.2]	5" [127]	