

# F6200HDU, 2-Way Butterfly Valve

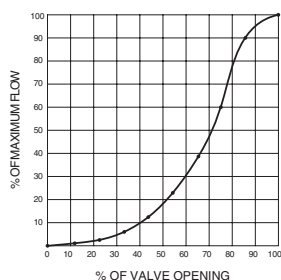
## Resilient Seat, 304 Stainless Steel Disc



### Technical Data

Service	chilled, hot water, up to 60% glycol
Flow Characteristic	modified equal percentage
Controllable Flow Range	90° rotation
Size [mm]	8" [200]
End Fitting	for use with ANSI Class 125/150 flanges
Body	ductile iron ASTM A536
Body Finish	Epoxy powder coated
Stem Packing	EPDM (lubricated)
Ball Seat	EPDM
Shaft	416 stainless steel
Bushings	RPTFE
Disc	304 stainless steel
Body Pressure Rating [psi]	ANSI 125, standard class B
Number of Bolt Holes	8
Lug Threads	3/4-10 UNC
Media Temperature Range (Water)	-22°F to 250°F [-30°C to 120°C]
Close-Off Pressure	50 psi
Rangeability	10:1 (for 30° to 70° range)
Maximum Velocity	12 FPS
Cv	3136
Weight	31.3 lb [14.2 kg]
Leakage	0%
Servicing	maintenance free

### Flow Pattern



### Product Features

50 psi bubble tight shut-off, Long stem design allows for 2" insulation, Valve face-to-face dimensions comply with API 609 & MSS-SP-67, Completely assembled and tested, ready for installation.

### Application

These valves are designed to meet the needs of HVAC and commercial applications requiring 0% leakage for liquids. Typical applications include chiller isolation, cooling tower isolation, change-over systems, large air handler coil control, bypass and process control applications. The large Cv values provide for an economical control valve solution for larger flow applications. Designed for use in ANSI flanged piping systems.

### Jobsite Note

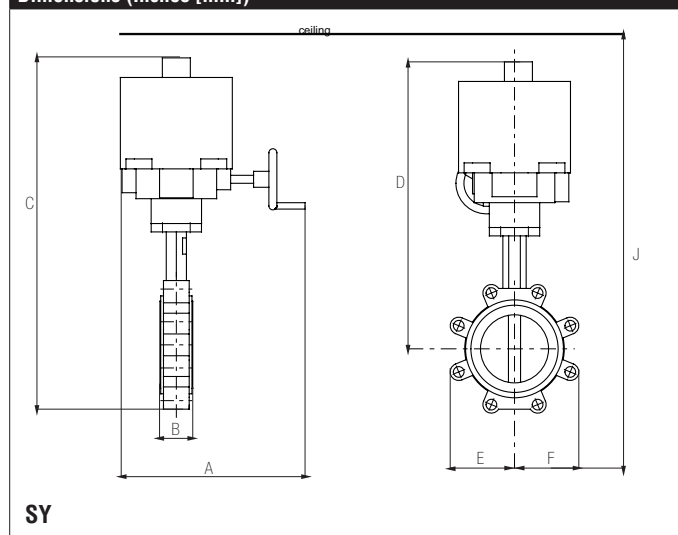
Valves should be stored in a weather protected area prior to construction. Complete installation recommendations can be found in Belimo's Installation and Maintenance Instructions for F6/F7... Butterfly Valves.

Flow/Cv								
Cv 10°	Cv 20°	Cv 30°	Cv 40°	Cv 50°	Cv 60°	Cv 70°	Cv 80°	Cv 90°
2	89	188	408	727	1202	1903	2854	3136

### Suitable Actuators

	Non-Spring
F6200HDU	SY3

### Dimensions (Inches [mm])



A	B	C	D	E	F	J
13" [332]	2.4" [61]	26.64" [676]	20.37" [517]	6.5" [165]		34" [864]