

Schneider TAC Xenta

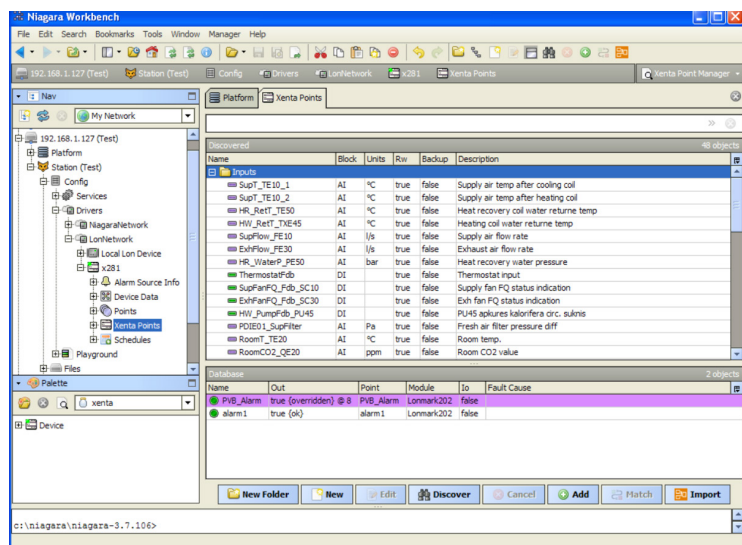
SH-DR-AX-TAC

The TAC driver enables direct communication between Schneider Electric TAC Xenta controllers and Tridium Niagara powered devices. Xenta series include a range of freely programmable controllers, which support a proprietary TAC protocol on top of open LonTalk medium.

All components of the driver, the device and the points are perfectly integrated into the framework: this allows for better efficiency in the design and maintenance of the systems, which results in lower costs.

A Niagara device with a Xenta driver provides a unique and cost-effective solution for Schneider building management system retrofit, seamless integration of various protocols and convenient makeover of front-end software. Xenta devices should not be reprogrammed and original TAC Vista front-end can co-exist with Niagara on the same network until the end of the commissioning.

Niagara uses a standard LON card to connect to Xenta network. Xenta device points and schedules are imported into Niagara automatically without complex engineering. They retain their names, descriptions and unit facets, which greatly simplifies integration process.



Supported systems:

- Niagara AX
- Niagara N4

Supported devices:

- Xenta 281
- Xenta 282
- Xenta 283
- Xenta 401
- Xenta 401:B
- Xenta 401:C
- Xenta 301
- Xenta 302

Requirements:

- Standard LON card and LON driver

Features:

- Works with all TAC Xenta devices
- Uses standard LON option card
- Provides automatic device discovery
- Allows automatic point discovery or point import from program file
- Enables point read and write
- Physical inputs and outputs could be overridden, i.e. for maintenance
- Supports Xenta time schedules
- Enables read-only, write-only and read-write access to schedules
- Flexible point polling intervals
- Displays point names, descriptions and unit facets
- Ideal for retrofit application
- TAC Vista front-end could coexist with Niagara until the end of the commissioning.

Order references:

- SH-DR-AX-TAC-J3 Schneider TAC Xenta for Jace 3
- SH-DR-AX-TAC-J6 Schneider TAC Xenta for Jace 6
- SH-DR-AX-TAC-J8-250 Schneider TAC Xenta for Jace 8000 / 250 points
- SH-DR-AX-TAC-J8-1000 Schneider TAC Xenta for Jace 8000 / 1000 points
- SH-DR-AX-TAC-J8-UNL Schneider TAC Xenta for Jace 8000 / unlimited
- SH-DR-AX-TAC-SUP Schneider TAC Xenta for Supervisor
- SH-DR-AX-TAC-SUP-500 Schneider TAC Xenta for Supervisor extra 500 points