

GENERAL

The RP970A is a direct acting, proportional relay suitable for use in HVAC systems to increase the capacity of a branchline signal to a pneumatic valve or damper operator. The RP970A provides a 1:1 pressure ratio.

FEATURES

- In-line, wall, or panel mounted
- Sharp barb air connections
- Molded plastic construction

RP970A Capacity Relay

DESCRIPTION

The RP970A is a direct acting, proportional relay suitable for use in HVAC systems to increase the capacity of a branchline signal to a pneumatic valve or damper operator. The RP970A provides a 1:1 pressure ratio.

SPECIFICATIONS

Model:
RP970A

Operating Range:
0 to 18 psi (0 to 124 kPa)

Maximum Safe Air Pressure:
30 psi (205 kPa)

Ambient Operating Limits:
Temperature: 0 to 140F (-18 to 60C)
Humidity: 5 to 95%

Operating Air Pressures:
Pilot: 3 to 15 psi (21 to 103 kPa)
Main: 18 psi (124 kPa)

Air Handling Capacity:
0.039 scfm at 1 psi differential (18 ml/s at 5 kPa differential)

Air Consumption:
0.0017 scfm (0.8 ml/s)

Mounting:
In-line, wall, or panel mounted

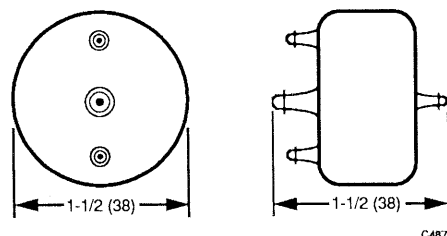
Port Identification:
Port 1: Main
Port 2: Branch
Port 3: Pilot
Port 4: Exhaust

Air Connection:
Sharp barb type for 1/4-in. (6-mm) O.D. plastic tubing for Port 1 and 5/32-in. (4-mm) O.D. plastic tubing for Ports 2, 3, and 4

Construction:
Molded plastic with neoprene diaphragm, brass valve seats, and 100-mesh stainless steel filters in main and branch ports

Accessories:
14003030-001 Mounting Clip (1-1/2 in.)
801629S Cable Clamp (1-1/2 in.)

Dimensions In Inches (Millimeters):



By using this Honeywell literature, you agree that Honeywell will have no liability for any damages arising out of your use or modification to, the literature. You will defend and indemnify Honeywell, its affiliates and subsidiaries, from and against any liability, cost, or damages, including attorneys' fees, arising out of, or resulting from, any modification to the literature by you.

Honeywell

In the USA: Honeywell Plaza, Minneapolis, Minnesota 55408
In Canada: Scarborough, Ontario M1P 2V9
Subsidiaries and Affiliates Around the World

77-9850
Commercial Bldg Group
MLF TAB: II. C. 5.

Printed in USA

Rev. 6-90