

PCA/PCX Control Panel and Subpanel Assembly with BACnet/IP Controller Catalog Page

Description

The Advanced Field Equipment Controller (PCA) and Input/Output Module (PCX) control panel is a pre-wired, preassembled standard control panel and enclosure that contains an IP-PCA or IP-PCA/PCX combination of digital controllers. This predesigned solution saves time and money. In addition, the assembly may be tailored to a variety of common applications for additional savings.

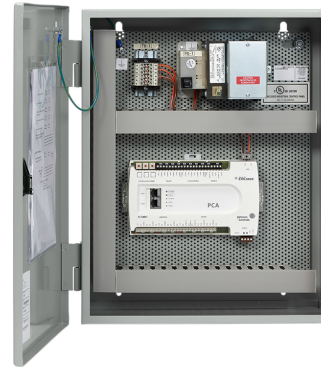
The control panel is shipped complete, mounted in a steel enclosure. In addition to the controllers, the assembly contains a power supply incorporating a 5 A circuit breaker, a 96 VA 120/24 VAC transformer, and two 120 VAC outlets. An optional second 96 VA 120/24 VAC transformer is also available. A five- or ten-point 24 VAC distribution terminal block that allows for termination of additional field mounted devices is also included. All models include the PCA4911 controller which operates on BACnet®/IP networks and integrates with Johnson Controls and third-party systems. Designated models include an PCX4711 Input/Output Module without terminal blocks and other models contain the PCX4711 Input/Output Module with terminal blocks. Some models offer space in the panel along with a section of DIN rail to mount relays and transducers, if desired.

A subpanel assembly is the complete internal portion of the panel without the enclosure. It contains all of the same components as a comparable standard panel but is a perforated subpanel with all components already mounted. This is a popular option if it is critical to keep the panel location in the designated installation area using an empty enclosure and then add the subpanel at a later date.

Features

- consistent layout for all standard control panel solutions simplifies installation and commissioning
- power supply with resettable circuit breaker and transformer provides high- and low-voltage protection
- space and DIN rail reserved for future component additions allows easy upgrading to a standard-plus control panel

PCA Standard Control Panel Assembly



- prebuilt, pre-wired, and pretested in an ISO-9001 manufacturing facility provides products of consistently high quality
- UL 508A rated control panel and UL 50, Canadian Standards Association (CSA) approved enclosure meets local and national code requirements for the United States and Canada (cULus listed)
- California Office of Statewide Health Planning and Development (OSHPD) Special Seismic Certification Preapproved control panel assembly meets standards for rigid and flexible mounting conditions to account for unit-mounted and remote-mounted application
- controller with color-coded and clearly labeled screw terminals provides easily identifiable input/output points at the controller

Repair information

If the PCA/PCX control panel assembly fails to operate within its specifications, replace the unit. For a replacement assembly, contact the nearest Johnson Controls® representative.

Components included with the PCA/PCX Standard Control Panel Assembly

Quantity	Description
1	Metal Enclosure, NEMA 1 with slotted flush latch
1	FX-PCA4911-0 digital controller, which operates on BACnet/IP networks
1	FX-PCX4711-0 (if applicable)
1	96 VA 120/24 VAC power supply with 5 A primary circuit protection and two 120 VAC outlets (standard on all panels)
1	96 VA 120/24 VAC transformer with secondary protection (if applicable)
1	Five- or ten-point 24 VAC distribution terminal block ¹

1. All panels with a single power supply ship with a five-point terminal block. Panels with an additional transformer ship with a ten-point terminal block.

Selection charts

Panels — 16 x 20 enclosure

Product code number	Description
P2AAN-EA001N00	FX-PCA4911-0 panel mounted in a 16 in. W x 20 in. H x 6-5/8 in. D enclosure

Panels — 20 x 24 enclosure

Product code number	Description
P2BAN-EA001N00	FX-PCA4911-0 panel mounted in a 20 in. W x 24 in. H x 6-5/8 in. D enclosure

Panels — 24 x 24 enclosure

Product code number	Description
P2CAN-EA001Y00	FX-PCA4911-0 panel mounted in a 24 in. W x 24 in. H x 6-5/8 in. D enclosure, with terminal blocks

PCA/PCX Control Panel and Subpanel Assembly with BACnet/IP Controller Catalog

Page (Continued)

Panels — 24 x 36 enclosure

Product code number	Description
P2DAN-EA001N00	FX-PCA4911-0 panel mounted in a 24 in. W x 36 in. H x 6-5/8 in. D enclosure
P2DAN-EA002N00	FX-PCA4911-0 panel mounted in a 24 in. W x 36 in. H x 6-5/8 in. D enclosure, with additional 96 VA transformer
P2DAN-EA002Y00	FX-PCA4911-0 panel mounted in a 24 in. W x 36 in. H x 6-5/8 in. D enclosure, with additional 96 VA transformer and terminal blocks
P2DAN-EAFA1N00	FX-PCA4911-0 and FX-PCX4711-0 panel mounted in a 24 in. W x 36 in. H x 6-5/8 in. D enclosure
P2DAN-EAFA2N00	FX-PCA4911-0 and FX-PCX4711-0 panel mounted in a 24 in. W x 36 in. H x 6-5/8 in. D enclosure, with additional 96 VA transformer
P2DAN-EAFA2Y00	FX-PCA4911-0 and FX-PCX4711-0 panel mounted in a 24 in. W x 36 in. H x 6-5/8 in. D enclosure, with additional 96 VA transformer and terminal blocks

Subpanel for 16 x 20 enclosure

Product code number	Description
S2A0N-EA001N00	Subpanel assembly with FX-PCA4911-0 for use in a 16 in. W x 20 in. H x 6-5/8 in. D enclosure

Subpanel for 20 x 24 enclosure

Product code number	Description
S2B0N-EA001N00	Subpanel assembly with FX-PCA4911-0 for use in a 20 in. W x 24 in. H x 6-5/8 in. D enclosure

Subpanel for 24 x 24 enclosure

Product code number	Description
S2C0N-EA001Y00	Subpanel assembly with FX-PCA4911-0 for use in a 24 in. W x 24 in. H x 6-5/8 in. D enclosure, with terminal blocks

Subpanels for 24 x 36 enclosure

Product code number	Description
S2D0N-EA001N00	Subpanel assembly with FX-PCA4911-0 for use in a 24 in. W x 36 in. H x 6-5/8 in. D enclosure
S2D0N-EA002N00	Subpanel assembly with FX-PCA4911-0 for use in a 24 in. W x 36 in. H x 6-5/8 in. D enclosure, with additional 96 VA transformer
S2D0N-EA002Y00	Subpanel assembly with FX-PCA4911-0 for use in a 24 in. W x 36 in. H x 6-5/8 in. D enclosure, with additional 96 VA transformer and terminal blocks
S2D0N-EAFA1N00	Subpanel assembly with FX-PCA4911-0 and FX-PCX4711-0 for use in a 24 in. W x 36 in. H x 6-5/8 in. D enclosure
S2D0N-EAFA2N00	Subpanel assembly with FX-PCA4911-0 and FX-PCX4711-0 for use in a 24 in. W x 36 in. H x 6-5/8 in. D enclosure, with additional 96 VA transformer
S2D0N-EAFA2Y00	Subpanel assembly with FX-PCA4911-0 and FX-PCX4711-0 for use in a 24 in. W x 36 in. H x 6-5/8 in. D enclosure, with additional 96 VA transformer and terminal blocks

PCA/PCX Control Panel and Subpanel Assembly with BACnet/IP Controller Catalog Page (Continued)

Technical specifications

FAC/IOM Standard Control Panel Assembly	
Terminals	Controller mounted screw termination
Wire size	Ground wire: 14 AWG; Transformer wires: 16 AWG
Enclosure rating	NEMA 1
Enclosure finish	ANSI 61 gray polyester powder coating (perforated panel and enclosure) (where applicable)
Ambient operating condition	32°F to 122°F (0°C to 50°C) 10% to 90% RH
Dimensions of panels (Width x Height x Depth)	16 in. W x 20 in. H x 6-5/8 in. D (406 mm W x 508 mm H x 168 mm D) 20 in. W x 24 in. H x 6-5/8 in. D (508 mm W x 610 mm H x 168 mm D) 24 in. W x 24 in. H x 6-5/8 in. D (508 mm W x 610 mm H x 168 mm D) 24 in. W x 36 in. H x 6-5/8 in. D (610 mm W x 914 mm H x 168 mm D)
Ambient storage condition	-40°F to 176°F (-40°C to 80°C) 5% to 95% RH
Agency compliance	Control Panel: UL 508A Rated (cULus listed); Enclosure UL 50 Rated, CSA Approved OSHPD Special Seismic Certification Preapproval: OSP-0140-10 California Building Code (CBC) - 2013, International Building Code (IBC) - 2012 Seismic Performance Characteristics: $S_{DS}(g) = 2.26$, $z/h = 1.0$, $I_p = 1.5$