

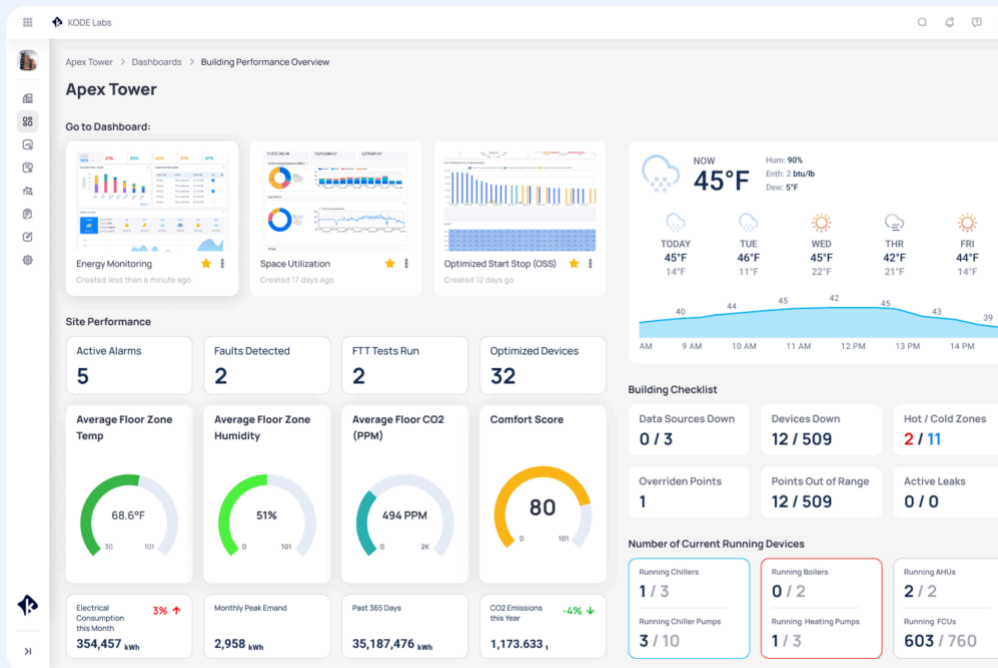
KODE OS

Your smart building operating system

KODE OS allows you to streamline all building operations from cloud BMS, fault detection & diagnostics, digital maintenance and commissioning to energy management and analytics. **All from one platform.**

Experience real-time results that transform operations

Unlock a smarter, more efficient, and sustainable system for your buildings, with seamlessly integrated solutions, meticulously designed to deliver unmatched quality and performance.



Portfolio Asset Strategy

Real-Time Visibility Into Performance

Data-Driven Maintenance

Energy Optimization

Space Utilization

Carbon Tracking / Net Zero

Intelligent solutions that power building performance from the core



Data-driven insights



Independent data layer



Proactive maintenance



iOS & Android apps



Energy & compliance



Automated workflows



Autonomous operations



160+ available integrations

Where software leads hardware

At **KODE Labs**, we are hard core believers that software leads hardware in driving the intelligence, efficiency, and sustainability of modern buildings.

KODE OS is where all your data is normalized and orchestrated into automated experiences for everyone around the building.

Cloud BMS

Cloud command & control.

Building BI

Real-time analytics & dashboards

Digital Maintenance

Fault detection & diagnostics and digital commissioning

IoT Platform

Integrating 190+ IoT devices instantaneously

Data Layer

Data mastery for smart buildings

Mobile App

Building management on-the-go

Why KODE?

Up to

30 %

Energy savings

Up to

20 %

Maintenance savings

Up to

50 %

Operational savings

Less than

1 year

Payback period

API Integrations

190+ Pre-Built Integrations

Plug-and-play integrations scalable across the portfolio. If not already connected, a new integration can be developed within 60 days.

kodelabs.com

