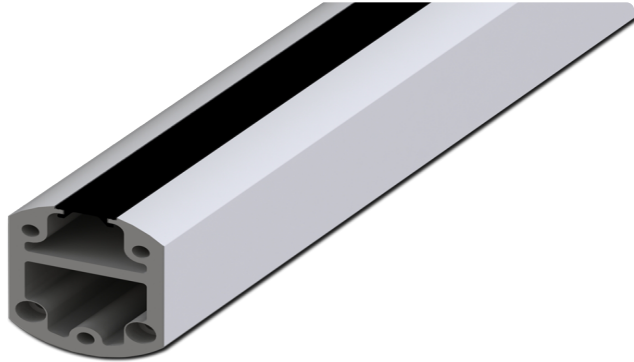




Your Enclosure Source®

Saginaw Control and Engineering
 95 Midland Road Saginaw, MI 48638-5770
 (800) 234-6871 - Fax: (989) 799-4524
 SCE@SaginawControl.com

SCE-SA39T



Product Specifications:

Part Number: SCE-SA39T
Description: Open Tube Suspension Profile
Height: 39.37"
Width: 2.56"
Depth: 3.54"
Price Code: C3
List Price: \$211.92
Catalog Page: 398
Est. Ship Weight: 13.23 lbs

Construction

- * Cast aluminum couplings.
- * Extruded aluminum tubes (6060T66).
- * Rotating couplings have adjustable tensioner brakes to control movement while in use.
- * Rigid, durable bearing in all rotating couplings withstand the stress of continuous use.
- * Open or closed tube design.
- * Open tube allows for easy access to lay in wiring, with easy to install push fit rubber cover.
- * Closed tube acts as conduit for feeding wiring.
- * Removable access covers on all couplings with 90 degree turn.
- * Hardware and gasket included for installation of coupling to tube.
- * Cast aluminum couplings.
- * Extruded aluminum tubes (6060T66).
- * Rotating couplings have adjustable tensioner brakes to control movement while in use.
- * Rigid, durable bearings in all rotating couplings withstand the stress of Continuous use.
- * Open or closed tube design.
- * Removable access covers on all couplings with 90 degree turn.
- * Hardware and gasket included for installation of coupling to tube.
- * Range of vertical movement 36.86 inches

Application

Designed for use with the SCE HMI enclosures, allows operators to easily move or position an HMI to an ergonomic and comfortable working position. Made of heavy-duty, reliable construction. Suspension Systems can be assembled in a multitude of configurations that allow for machine mount, wall mount, top mount, and floor mount options.

Finish

RAL 7035 powder coated finish.

*Suspension System parts cannot be custom painted

Industry Standards - (IS17)

- * NEMA Not Applicable
- * UL Not Applicable
- * CSA N/A

Notes

*Suspension System parts cannot be custom painted

Similar Part Numbers

- SCE-SA30T Open Tube Suspension Profile
- SCE-SA30TC Closed Tube Suspension Profile
- SCE-SA39TC Closed Tube Suspension Profile

Installation Information

- * Counter Balance
- SA Suspension System
- Suspension System Counter Balance Configurations
- SCE-SAMM