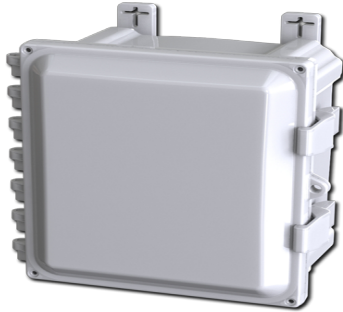




Saginaw Control and Engineering  
 95 Midland Road Saginaw, MI 48638-5770  
 (800) 234-6871 - Fax: (989) 799-4524  
 SCE@SaginawControl.com

## SCE-1008PC

### Product Specifications:



**Part Number:** SCE-1008PC  
**Description:** Polycarbonate Enclosure  
**Height:** 11.41"  
**Width:** 10.68"  
**Depth:** 6.36"  
**Price Code:** F1  
**List Price:** \$108.33  
**Catalog Page:** 328  
**Est. Ship Weight:** 4.31 lbs

#### Construction

- \* Impact Resistant Polycarbonate.
- \* Opaque cover.
- \* Brass inserts for securing mounting feet.
- \* Polycarbonate external mounting feet included.
- \* Oil-resistant door gasket.
- \* Polycarbonate quick release latches.
- \* Polycarbonate hinges.
- \* Polycarbonate hasp and staple for padlocking.
- \* 10-32 standoffs provided for mounting optional panels.
- \* Multiple bosses for easy installation of devices and DIN rails.

#### Application

Designed for indoor or outdoor use to house electrical and electronic controls, instruments and components in areas that may be regularly hosed down or are in very wet conditions. Non-corrosive, UV resistant polycarbonate enclosure with opaque covers. Provides protection from dust, dirt, oil and water.

#### Finish

RAL 7035 Light Gray Polycarbonate

#### Industry Standards - (IS6)

- \* NEMA Type 3R, 4, 4X, 12 and Type 13
- \* UL Listed Type 3R, 4, 4X and 12
- \* CSA Type 4, 4X and 12
- \* IEC 60529
- \* IP 66

#### Notes

UL File E319779

#### Optional Accessories

SCE-10P8 Subpanel, Flat  
 SCE-10P8AL Subpanel, Flat Aluminum  
 SCE-PCSP Polycarbonate Swing-Out Panel Kit

#### Similar Part Numbers

SCE-10086PC Polycarbonate Enclosure  
 SCE-1010PC Polycarbonate Enclosure  
 SCE-1210PC Polycarbonate Enclosure  
 SCE-1412PC Polycarbonate Enclosure  
 SCE-1614PC Polycarbonate Enclosure  
 SCE-18164PC Polycarbonate Enclosure  
 SCE-1816PC Polycarbonate Enclosure  
 SCE-2016PC Polycarbonate Enclosure  
 SCE-606PC Polycarbonate Enclosure  
 SCE-806PC Polycarbonate Enclosure