

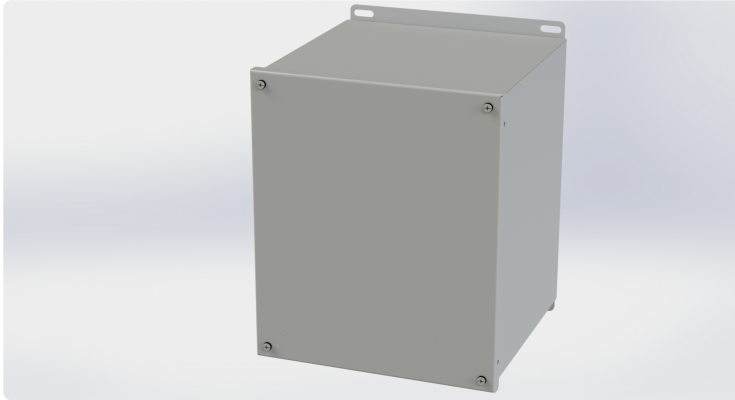


Your Enclosure Source®

Saginaw Control and Engineering
 95 Midland Road Saginaw, MI 48638-5770
 (800) 234-6871 - Fax: (989) 799-4524
 SCE@SaginawControl.com

SCE-121010SC

Product Specifications:



Part Number: SCE-121010SC
Description: SC Enclosure
Height: 12.13"
Width: 10.00"
Depth: 10.00"
Price Code: A1
List Price: \$125.41
Catalog Page: 88
Est. Ship Weight: 17.00 lbs

Construction

- * 0.063 In. carbon steel.
- * Seams continuously welded and ground smooth, no holes or knock-outs.
- * Captivated cover screws thread into sealed wells.
- * Pour in place oil & water resistant gasket
- * 10-32 Standoffs provided for mounting optional panels.

Application

Designed for use as electrical junction boxes, terminal wiring boxes, instrument housings, and electrical control enclosures. Provides protection from dust, oil and water.

Finish

ANSI-61 gray powder coating inside and out. Optional sub-panels are powder coated white.

Industry Standards - (IS4)

- * NEMA Type 3R, 4, 12 and Type 13
- * UL Listed Type 3R, 4 and 12
- * CSA Type 3R, 4 and 12
- * IEC 60529
- * IP 66

Notes

Special Instructions apply for IS3, IS4 and IS6 to maintain the environmental rating of Type 3R for these parts. Instructions are located on the enclosure door. Drip shield is required on IS3, drip shield is recommended on IS4 and IS6. Drain holes are required on all.

Optional Accessories

- SCE-102534 Screw, 10/32 x 5/8 in. SS Captive w/ retainer (12)
- SCE-12P10 Subpanel, Flat

Similar Part Numbers

- SCE-10086SCSC Enclosure
- SCE-1008SCSC Enclosure
- SCE-10106SCSC Enclosure
- SCE-1010SCSC Enclosure
- SCE-1210SCSC Enclosure
- SCE-1212SCSC Enclosure
- SCE-1412SCSC Enclosure
- SCE-1614SCSC Enclosure
- SCE-4044SCSC Enclosure
- SCE-404SCSC Enclosure

Installation Information

- * Screw Cover Enclosures