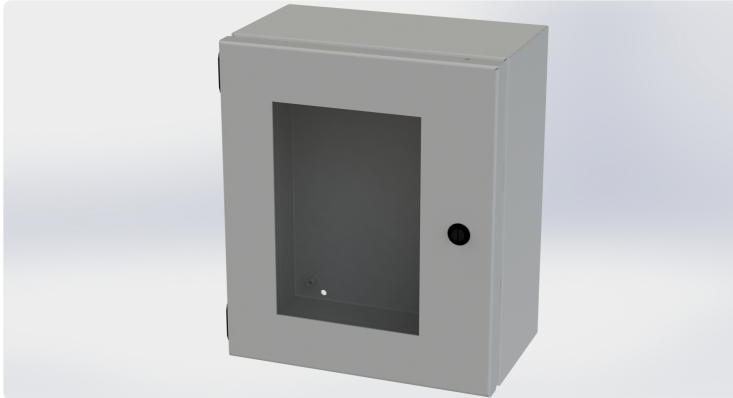




Saginaw Control and Engineering
 95 Midland Road Saginaw, MI 48638-5770
 (800) 234-6871 - Fax: (989) 799-4524
 SCE@SaginawControl.com

SCE-1210ELJW

Product Specifications:



Part Number: SCE-1210ELJW
Description: ELJ Enclosure W/Viewing Window
Height: 12.00"
Width: 10.00"
Depth: 6.00"
Price Code: E1
List Price: \$138.48
Catalog Page: 78
Est. Ship Weight: 10.00 lbs

Construction

- * 0.063 in. carbon steel.
- * Seams continuously welded and ground smooth.
- * Flange trough collar around all sides of door opening.
- * Pour in place oil & water resistant gasket
- * 10-32 Standoffs provided for mounting optional panels.
- * Removable hinges.
- * Doors open 180 degrees.
- * Black mini quarter turn latches.
- * Latches are opened or closed with a screwdriver.
- * Sealing washers and hole plugs included.
- * Ground stud on door and body.
- * Mounting feet included.

Application

Designed to house electrical controls, instruments and components that require unrestricted viewing of the gauges or controls in areas which may be regularly hosed down or are in very wet or oily conditions. Provides protection from dust, dirt, oil, and water. For outdoor application a drip shield and drain vent is recommended.

For details about the design, performance expectations, applications and design suggestions - See Design Considerations
www.saginawcontrol.com/instman/considerations.pdf

Finish

ANSI-61 gray powder coating inside and out. Optional sub-panels are powder coated white.

Industry Standards - (IS4)

- * NEMA Type 3R, 4, 12 and Type 13
- * UL Listed Type 3R, 4 and 12
- * CSA Type 3R, 4 and 12
- * IEC 60529
- * IP 66

Notes

Recommend use as Type 3R rating in full outdoor exposure and extreme weather environments.

For more details see Design Considerations When Specifying Your Enclosure on our website.

Special Instructions apply for IS3, IS4 and IS6 to maintain the environmental rating of Type 3R for these parts. Instructions are located on the enclosure door. Drip shield is required on IS3, drip shield is recommended on IS4 and IS6. Drain holes are required on all.

Accessories Included

SCE-ELJMFk Mtg Foot Kit (ELJ Enclosure)

Optional Accessories

SCE-12P10 Subpanel, Flat
 SCE-BVK Breather Vent
 SCE-DFJ1210 Panel, Dead Front (ELJ & CH)
 SCE-MINQ6MS Latch, Black Mini Q-Turn W/6mm SQ Insert ...
 SCE-MINQKLB Latch, Mini Keylocking Lever Knob (Black)
 SCE-MINQLB Latch, Black Mini Lever
 SCE-MINQPL Bracket, Mini Quarter Turn Padlock Bracket

Similar Part Numbers

SCE-10086ELJWELJ Enclosure W/Viewing Window
 SCE-1008ELJWELJ Enclosure W/Viewing Window
 SCE-12108ELJWELJ Enclosure W/Viewing Window
 SCE-16148ELJWELJ Enclosure W/Viewing Window
 SCE-1614ELJWELJ Enclosure W/Viewing Window
 SCE-20208ELJWELJ Enclosure w/Viewing Window

Installation Information

- * Mounting Foot Kit for (ELJ) Enviroline
- * Dead Front CH & ELJ Style Installation Instructions
- * Dead Front Wall Mount < 20 In Height Installation Instructions
- * Enviroline Junction Enclosure