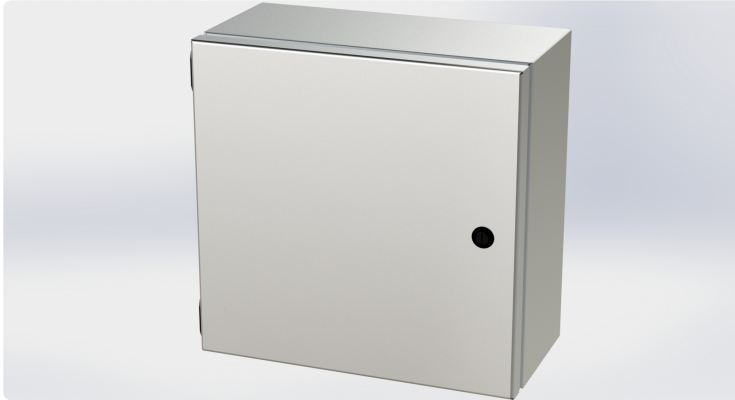




Saginaw Control and Engineering
 95 Midland Road Saginaw, MI 48638-5770
 (800) 234-6871 - Fax: (989) 799-4524
 SCE@SaginawControl.com

SCE-1212ELJSS

Product Specifications:



Part Number: SCE-1212ELJSS
Description: S.S. ELJ Enclosure
Height: 12.00"
Width: 12.00"
Depth: 6.00"
Price Code: S6
List Price: \$355.50
Catalog Page: 262
Est. Ship Weight: 11.00 lbs

Construction

- * 0.063 In. stainless steel Type 304.
- * Seams continuously welded and ground smooth.
- * Flange trough collar around all sides of door opening.
- * Pour in place oil & water resistant gasket
- * 10-32 Standoffs provided for mounting optional panels.
- * Removable hinges.
- * Doors open 180 degrees.
- * Black mini quarter turn latches.
- * Latches are opened or closed with a screwdriver.
- * Sealing washers and hole plugs included.
- * Ground stud on door and body.
- * Mounting feet included.
- * Optional latches available.

Application

Designed to house electrical controls, instruments and components in areas which may be regularly hosed down or are in very wet or oily conditions. Provides protection from dust, dirt, oil, and water. For outdoor application a drip shield and drain vent is recommended.

For details about the design, performance expectations, applications and design suggestions - See Design Considerations
www.saginawcontrol.com/instman/considerations.pdf

Finish

#4 brushed finish on all exterior surfaces. Optional sub-panels are powder coated white.

Industry Standards - (IS6)

- * NEMA Type 3R, 4, 4X, 12 and Type 13
- * UL Listed Type 3R, 4, 4X and 12
- * CSA Type 4, 4X and 12
- * IEC 60529
- * IP 66

Notes

Special Instructions apply for IS3, IS4 and IS6 to maintain the environmental rating of Type 3R for these parts. Instructions are located on the enclosure door. Drip shield is required on IS3, drip shield is recommended on IS4 and IS6. Drain holes are required on all.

Accessories Included

SCE-ELJMFk Mtg Foot Kit (ELJ Enclosure)

Optional Accessories

SCE-12P12 Subpanel, Flat
 SCE-12P12JGALV Subpanel, Flat Junction Galvannealed
 SCE-BVK Breather Vent
 SCE-DFJ1212 Panel, Dead Front (ELJ & CH)
 SCE-DS12SS Shield, S.S. Drip

Similar Part Numbers

SCE-10086ELJSS.S. ELJ Enclosure
 SCE-1008ELJSS.S. ELJ Enclosure
 SCE-12108ELJSS.S. ELJ Enclosure
 SCE-1210ELJSS.S. ELJ Enclosure
 SCE-14128ELJSS.S. ELJ Enclosure
 SCE-1412ELJSS.S. ELJ Enclosure
 SCE-16148ELJSS.S. ELJ Enclosure
 SCE-1614ELJSS.S. ELJ Enclosure
 SCE-604ELJSS.S. ELJ Enclosure
 SCE-606ELJSS.S. ELJ Enclosure

Installation Information

- * Mounting Foot Kit for (ELJ) Enviroline
- * Drip Shield Kit Assembly
- * Dead Front CH & ELJ Style Installation Instructions
- * Swing Panel Assembly for Enviroline Enclosures
- * Dead Front Wall Mount < 20 In Height Installation Instructions
- * Enviroline Junction Enclosure