

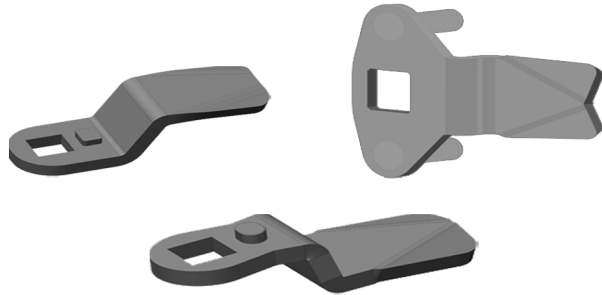


Your Enclosure Source®

Saginaw Control and Engineering
95 Midland Road Saginaw, MI 48638-5770
(800) 234-6871 - Fax: (989) 799-4524
SCE@SaginawControl.com

SCE-128577

Product Specifications:



Part Number: SCE-128577
Description: Cam, 35 mm Reach - 6 mm External Stop (10 pieces)
Height: 1.00"
Width: 1.50"
Depth: 1.00"
Price Code: P2
List Price: \$24.00
Catalog Page: 999
Est. Ship Weight: 0.50 lbs

Application

Intended for use with Optional Quarter turn Latches use with Nema 1 Enclosure 6 mm External Stop Cam, Plated Steel for use with Quarter Turn Latches

Industry Standards - (IS17)

- * NEMA Not Applicable
- * UL Not Applicable
- * CSA N/A

Optional Accessories

SCE-128577 Cam, 35 mm Reach - 6 mm External Stop (10 p...