

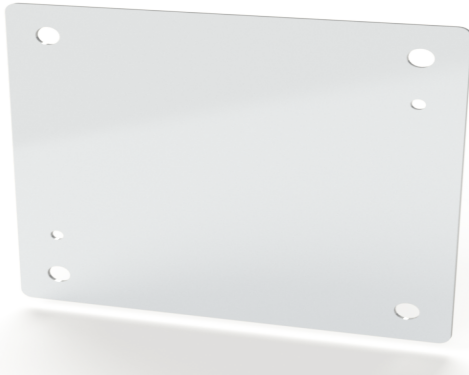


Your Enclosure Source®

Saginaw Control and Engineering
 95 Midland Road Saginaw, MI 48638-5770
 (800) 234-6871 - Fax: (989) 799-4524
 SCE@SaginawControl.com

SCE-12DLP12

Product Specifications:



Part Number: SCE-12DLP12

Description: Subpanel, Flat

Height: 9.00"

Width: 9.00"

Depth: 0.10"

Price Code: P3

List Price: \$13.67

Catalog Page: 418

Est. Ship Weight: 3.00 lbs

Construction

- * Subpanel, Bent - 0.125 In. Carbon Steel.
- * Subpanel, Flat - 0.075 In. Carbon Steel.

Finish

Powder Coated White.

Industry Standards - (IS17)

- * NEMA Not Applicable
- * UL Not Applicable
- * CSA N/A

Similar Part Numbers

- SCE-10P10Subpanel, Flat
- SCE-10P6Subpanel, Flat
- SCE-10P8Subpanel, Flat
- SCE-12P10Subpanel, Flat
- SCE-12P12Subpanel, Flat
- SCE-12P12CSubpanel, Flat
- SCE-12P16CSubpanel, Flat
- SCE-12P20CSubpanel, Flat
- SCE-12P24Subpanel, Bent
- SCE-12P6Subpanel, Flat

Installation Information

- * Sub-Plate Layout & Grounding for 3/8-16