

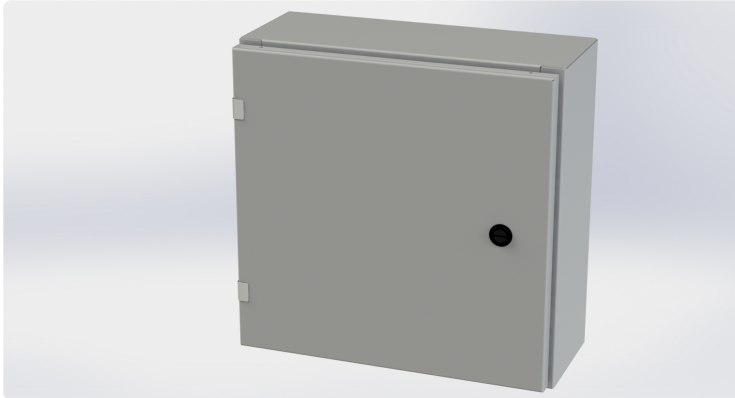


Your Enclosure Source®

Saginaw Control and Engineering
95 Midland Road Saginaw, MI 48638-5770
(800) 234-6871 - Fax: (989) 799-4524
SCE@SaginawControl.com

SCE-16EL1606LP

Product Specifications:



Part Number: SCE-16EL1606LP
Description: EL Enclosure
Height: 16.00"
Width: 16.00"
Depth: 6.00"
Price Code: E3
List Price: \$210.37
Catalog Page: 90
Est. Ship Weight: 24.00 lbs

Construction

- * 0.075 In. carbon steel.
- * Seams continuously welded and ground smooth.
- * Flange trough collar around all sides of door opening.
- * Pour in place oil & water resistant gasket
- * Collar studs 3/8-16 provided for mounting optional panels.
- * Concealed hinges.
- * Removable and interchangeable doors.
- * Black quarter turn latches.
- * Latches are opened or closed with a screwdriver.
- * Mounting holes in back of enclosure.
- * Mounting hardware, sealing washer and hole plug included.
- * Removable print pocket furnished if height and width of enclosure is greater than 12 inches.
- * Ground studs on door and body.

Application

Designed to house electrical and electronic controls, instruments and components. Provides protection from dust, oil and water. For outdoor application a drip shield and drain vent is recommended.

For details about the design, performance expectations, applications and design suggestions - See Design Considerations
www.saginawcontrol.com/instman/considerations.pdf

Options

- Optional tamper-resistant inserts are available. - Optional mounting feet available. - Door hardware available. - Interchangeable latches and handles available in the accessory section.

Finish

ANSI-61 gray powder coating inside and out. Optional sub-panels are powder coated white.

Industry Standards - (IS4)

- * NEMA Type 3R, 4, 12 and Type 13
- * UL Listed Type 3R, 4 and 12
- * CSA Type 3R, 4 and 12
- * IEC 60529
- * IP 66

Notes

Provision for Lifting Lugs will be included on enclosures with Height >48" and with Depth >16". The Lifting Lug assembly will be included with the enclosure bolt pack.

Special Instructions apply for IS3, IS4 and IS6 to maintain the environmental rating of Type 3R for these parts. Instructions are located on the enclosure door. Drip shield is required on IS3, drip shield is recommended on IS4 and IS6. Drain holes are required on all.

Optional Accessories

SCE-16P16 Subpanel, Flat
SCE-16P16GALV Subpanel, Flat Galvannealed
SCE-BVK Breather Vent
SCE-DS16N4 Shield, Drip
SCE-ELFM16H EL Flush Mount Frame
SCE-ELFM16W EL Flush Mount Frame
SCE-ELMFK4 Foot Kit, EL Mounting (4pc.)
SCE-ELSP Kit, Swing-Out Panel (12 -16 High)
SCE-RD16EL16 Door, Replacement

Similar Part Numbers

SCE-12EL1206LPEL Enclosure
SCE-12EL2406LPEL Enclosure
SCE-12EL2408LPEL Enclosure
SCE-16EL1206LPEL Enclosure
SCE-16EL1208LPEL Enclosure
SCE-16EL1408LPEL Enclosure
SCE-16EL1608LPEL Enclosure
SCE-16EL2006LPEL Enclosure
SCE-16EL2008LPEL Enclosure
SCE-20EL1206LPEL Enclosure

Installation Information

- * Mounting Foot Kit for Enviroline Enclosures
- * EL Flush Mount Frame
- * Drip Shield Kit Assembly
- * Dead Front Wall Mount Installation Instructions
- * Swing Panel Assembly for Enviroline Enclosures
- * Swing Panel ELSP3 for Encl. Height > 16
- * Dead Front Wall Mount < 20 In Height Installation Instructions
- * Swing Panel ELSP for Encl. Height <= 16
- * Sealing Washer Specifications
- * Enviroline Series Single Door Enclosure
- * Design Considerations When Specifying Your Enclosure