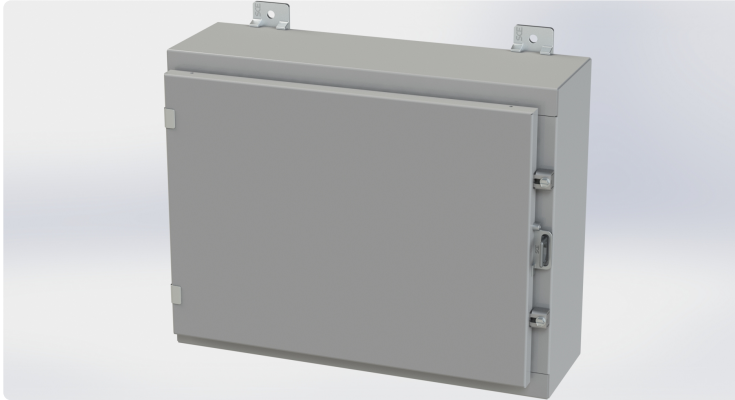




Saginaw Control and Engineering
 95 Midland Road Saginaw, MI 48638-5770
 (800) 234-6871 - Fax: (989) 799-4524
 SCE@SaginawControl.com

SCE-16H2006LP

SCE-16EL2006LP - Cost Effective Alternative.



Product Specifications:

Part Number: SCE-16H2006LP
Description: Nema 4 LP Enclosure
Height: 16.00"
Width: 20.00"
Depth: 6.00"
Price Code: A3
List Price: \$245.80
Catalog Page: 98
Est. Ship Weight: 30.00 lbs

Construction

- * 0.075 In. carbon steel.
- * Seams continuously welded and ground smooth.
- * Flange trough collar around all sides of door opening.
- * Door clamps are quick and easy to operate.
- * Concealed hinge.
- * Hasp and staple for padlocking.
- * Pour in place oil & water resistant gasket
- * Collar studs 3/8-16 provided for mounting optional panels.
- * Ground stud on door.
- * Removable print pocket furnished if height and width of enclosure is greater than 12 inches.
- * External mounting provision top and bottom of back.

Application

Designed to house electrical and electronic controls, instrument, and components. Provides protection from dust, dirt, oil and water. For outdoor application a drip shield and drain vent is recommended.

For Details about the design, performance expectations, applications and design suggestions - See Design Considerations
www.saginawcontrol.com/instman/considerations.pdf

Finish

ANSI-61 gray powder coating inside and out. Optional panels are powder coated white.

Industry Standards - (IS4)

- * NEMA Type 3R, 4, 12 and Type 13
- * UL Listed Type 3R, 4 and 12
- * CSA Type 3R, 4 and 12
- * IEC 60529
- * IP 66

Notes

Provision for Lifting Lugs on enclosures when Height >48" and Depth >16". The Lifting Lug assembly will be included with the enclosure bolt pack.

Special Instructions apply for IS3, IS4 and IS6 to maintain the environmental rating of Type 3R for these parts. Instructions are located on the enclosure door. Drip shield is required on IS3, drip shield is recommended on IS4 and IS6. Drain holes are required on all.

Optional Accessories

SCE-20P16 Subpanel, Flat
 SCE-20P16GALV Subpanel, Flat Galvannealed
 SCE-BVK Breather Vent
 SCE-DS20N4 Shield, Drip
 SCE-LPCLAMP Assembly, LP Clamp
 SCE-LPQR LP Style Quick Release Clamp Assy (Stainless)
 SCE-NADFK Kit, Swing-Out Panel Mounting
 SCE-RD16H20 Door, Replacement

Similar Part Numbers

SCE-12H2406LPNema 4 LP Enclosure
 SCE-12H2408LPNema 4 LP Enclosure
 SCE-16H1206LPNema 4 LP Enclosure
 SCE-16H1208LPNema 4 LP Enclosure
 SCE-16H1210LPNema 4 LP Enclosure
 SCE-16H1606LPNema 4 LP Enclosure
 SCE-16H1608LPNema 4 LP Enclosure
 SCE-16H2008LPNema 4 LP Enclosure
 SCE-20H1206LPNema 4 LP Enclosure
 SCE-20H1208LPNema 4 LP Enclosure

Installation Information

- * Drip Shield Kit Assembly
- * Swing Panel Assembly for LP Enclosures
- * Dead Front Wall Mount Installation Instructions
- * Dead Front Wall Mount < 20 In Height Installation Instructions
- * NEMA 12 and 4 Clamp Fastened Single Door Enclosure
- * Design Considerations When Specifying Your Enclosure