

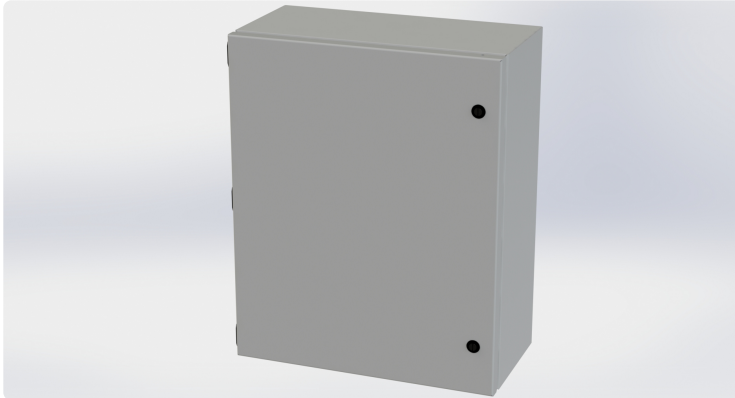


Your Enclosure Source®

Saginaw Control and Engineering  
 95 Midland Road Saginaw, MI 48638-5770  
 (800) 234-6871 - Fax: (989) 799-4524  
 SCE@SaginawControl.com

## SCE-20168ELJ

### Product Specifications:



**Part Number:** SCE-20168ELJ  
**Description:** ELJ Enclosure  
**Height:** 20.00"  
**Width:** 16.00"  
**Depth:** 8.00"  
**Price Code:** E1  
**List Price:** \$157.76  
**Catalog Page:** 74  
**Est. Ship Weight:** 23.00 lbs

#### Construction

- \* 0.063 In. carbon steel.
- \* Seams continuously welded and ground smooth.
- \* Flange trough collar around all sides of door opening.
- \* Pour in place oil & water resistant gasket.
- \* 10-32 Standoffs provided for mounting optional panels.
- \* Removable hinges.
- \* Doors open 180 degrees.
- \* Black mini quarter turn latches.
- \* Latches are opened or closed with a screwdriver.
- \* Sealing washers and hole plugs included.
- \* Ground stud on door & body.
- \* Mounting feet included.

#### Application

Designed to house electrical controls, instruments and components in areas which may be regularly hosed down or are in very wet or oily conditions. Provides protection from dust, dirt, oil, and water. For outdoor application a drip shield and drain vent is recommended.

For details about the design, performance expectations, applications and design suggestions - See Design Considerations  
[www.saginawcontrol.com/instman/considerations.pdf](http://www.saginawcontrol.com/instman/considerations.pdf)

#### Finish

ANSI-61 gray powder coating inside and out. Optional sub-panels are powder coated white.

#### Industry Standards - (IS4)

- \* NEMA Type 3R, 4, 12 and Type 13
- \* UL Listed Type 3R, 4 and 12
- \* CSA Type 3R, 4 and 12
- \* IEC 60529
- \* IP 66

#### Notes

Special Instructions apply for IS3, IS4 and IS6 to maintain the environmental rating of Type 3R for these parts. Instructions are located on the enclosure door. Drip shield is required on IS3, drip shield is recommended on IS4 and IS6. Drain holes are required on all.

#### Accessories Included

SCE-ELJMFK Mtg Foot Kit (ELJ Enclosure)

#### Optional Accessories

SCE-20P16J Subpanel, Flat Junction  
 SCE-20P16JGALV Subpanel, Flat Junction Galvannealed  
 SCE-BVK Breather Vent  
 SCE-DFJ2016 Panel, Dead Front (ELJ & CH)  
 SCE-DS16N4 Shield, Drip  
 SCE-MINQ6MS Latch, Black Mini Q-Turn W/6mm SQ Insert ...  
 SCE-MINQKLB Latch, Mini Keylocking Lever Knob (Black)  
 SCE-MINQLB Latch, Black Mini Lever  
 SCE-MINQPL Bracket, Mini Quarter Turn Padlock Bracket

#### Similar Part Numbers

SCE-10086ELJELJ Enclosure  
 SCE-1008ELJELJ Enclosure  
 SCE-10106ELJELJ Enclosure  
 SCE-12108ELJELJ Enclosure  
 SCE-1210ELJELJ Enclosure  
 SCE-1212ELJELJ Enclosure  
 SCE-14128ELJELJ Enclosure  
 SCE-1412ELJELJ Enclosure  
 SCE-16148ELJELJ Enclosure  
 SCE-1614ELJELJ Enclosure

#### Installation Information

- \* Mounting Foot Kit for (ELJ) Enviroline
- \* Drip Shield Kit Assembly
- \* Dead Front CH & ELJ Style Installation Instructions
- \* Swing Panel Assembly for Enviroline Enclosures
- \* Dead Front Wall Mount < 20 In Height Installation Instructions
- \* Enviroline Junction Enclosure