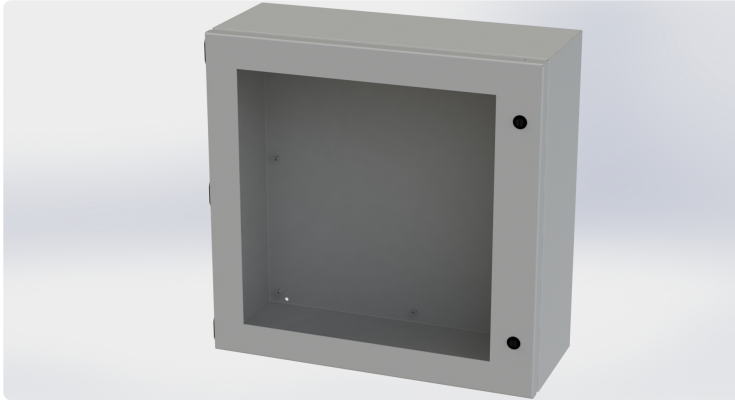




Your Enclosure Source®

Saginaw Control and Engineering  
95 Midland Road Saginaw, MI 48638-5770  
(800) 234-6871 - Fax: (989) 799-4524  
SCE@SaginawControl.com

## SCE-20208ELJW



## Product Specifications:

**Part Number:** SCE-20208ELJW  
**Description:** ELJ Enclosure w/Viewing Window  
**Height:** 20.00"  
**Width:** 20.00"  
**Depth:** 8.00"  
**Price Code:** E1  
**List Price:** \$242.20  
**Catalog Page:** 78  
**Est. Ship Weight:** 27.00 lbs

### Construction

- \* 0.063 in. carbon steel.
- \* Seams continuously welded and ground smooth.
- \* Flange trough collar around all sides of door opening.
- \* Pour in place oil & water resistant gasket
- \* 10-32 Standoffs provided for mounting optional panels.
- \* Removable hinges.
- \* Doors open 180 degrees.
- \* Black mini quarter turn latches.
- \* Latches are opened or closed with a screwdriver.
- \* Sealing washers and hole plugs included.
- \* Ground stud on door and body.
- \* Mounting feet included.

### Application

Designed to house electrical controls, instruments and components that require unrestricted viewing of the gauges or controls in areas which may be regularly hosed down or are in very wet or oily conditions. Provides protection from dust, dirt, oil, and water. For outdoor application a drip shield and drain vent is recommended.

For details about the design, performance expectations, applications and design suggestions - See Design Considerations  
[www.saginawcontrol.com/instman/considerations.pdf](http://www.saginawcontrol.com/instman/considerations.pdf)

### Finish

ANSI-61 gray powder coating inside and out. Optional sub-panels are powder coated white.

### Industry Standards - (IS4)

- \* NEMA Type 3R, 4, 12 and Type 13
- \* UL Listed Type 3R, 4 and 12
- \* CSA Type 3R, 4 and 12
- \* IEC 60529
- \* IP 66

### Notes

Recommend use as Type 3R rating in full outdoor exposure and extreme weather environments.

For more details see Design Considerations When Specifying Your Enclosure on our website.

Special Instructions apply for IS3, IS4 and IS6 to maintain the environmental rating of Type 3R for these parts. Instructions are located on the enclosure door. Drip shield is required on IS3, drip shield is recommended on IS4 and IS6. Drain holes are required on all.

### Accessories Included

SCE-ELJMFK Mtg Foot Kit (ELJ Enclosure)

### Optional Accessories

SCE-20P20J Subpanel, ELJ & CH Flat  
SCE-BVK Breather Vent  
SCE-DS20N4 Shield, Drip  
SCE-MINQ6MS Latch, Black Mini Q-Turn W/6mm SQ Insert ...  
SCE-MINQKLB Latch, Mini Keylocking Lever Knob (Black)  
SCE-MINQLB Latch, Black Mini Lever  
SCE-MINQPL Bracket, Mini Quarter Turn Padlock Bracket

### Similar Part Numbers

SCE-10086ELJWELJ Enclosure W/Viewing Window  
SCE-1008ELJWELJ Enclosure W/Viewing Window  
SCE-12108ELJWELJ Enclosure W/Viewing Window  
SCE-1210ELJWELJ Enclosure W/Viewing Window  
SCE-16148ELJWELJ Enclosure W/Viewing Window  
SCE-1614ELJWELJ Enclosure W/Viewing Window

### Installation Information

- \* Mounting Foot Kit for (ELJ) Enviroline
- \* Dead Front CH & ELJ Style Installation Instructions
- \* Dead Front Wall Mount < 20 In Height Installation Instructions
- \* Enviroline Junction Enclosure