

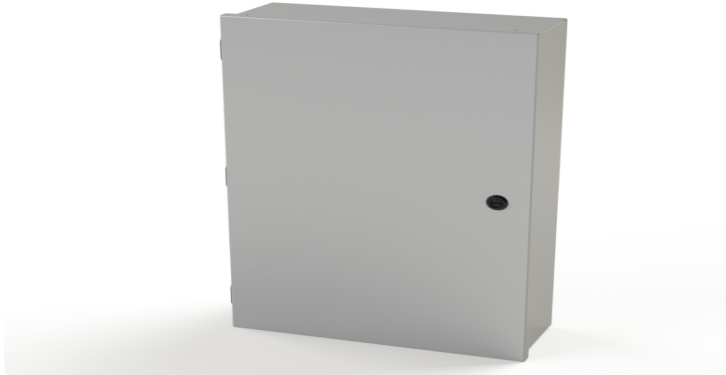


Your Enclosure Source®

Saginaw Control and Engineering
 95 Midland Road Saginaw, MI 48638-5770
 (800) 234-6871 - Fax: (989) 799-4524
 SCE@SaginawControl.com

SCE-24N1606LP

Product Specifications:



Part Number: SCE-24N1606LP
Description: Nema-1 Enclosure
Height: 24.00"
Width: 16.00"
Depth: 6.00"
Price Code: N1
List Price: \$131.91
Catalog Page: 122
Est. Ship Weight: 27.00 lbs

Construction

- * 0.048 In., 0.063 In. & 0.075 In. carbon steel depending on enclosure size.
- * Spot weld construction.
- * 1/4-20 Standoffs provided for mounting optional panels.
- * Doors open 180 degrees.
- * Black quarter turn latches.
- * Latches are opened or closed with a screwdriver.
- * Ground stud on door.
- * Mounting holes in back of enclosure.
- * Subpanel mounting hardware.
- * Butt Hinge - Black

Application

Designed to house electrical controls, instruments and components in areas that do not require oil, water and dust tight protection.

Options

Tamper-resistant inserts available. Optional mounting straps available.

Finish

ANSI-61 gray powder coating inside and out. Optional sub-panels are powder coated white.

Industry Standards - (IS8)

- * NEMA Type 1
- * UL Listed Type 1
- * CSA Type 1
- * IEC 60529
- * IP 30

Optional Accessories

SCE-128577 Cam, 35 mm Reach - 6 mm External Stop (10 p...
 SCE-24N16MP Subpanel, Flat Nema-1
 SCE-DLKLDB Keylocking Door Latch (Black)
 SCE-DLSBPA Quarter Turn, Nema 1
 SCE-NMST16 Strap, Nema-1 Mounting

Similar Part Numbers

SCE-12N1004LPNema-1 Enclosure
 SCE-12N1006LPNema-1 Enclosure
 SCE-12N1204LPNema-1 Enclosure
 SCE-12N1206LPNema-1 Enclosure
 SCE-12N1208LPNema-1 Enclosure
 SCE-14N1204LPNema-1 Enclosure
 SCE-14N1206LPNema-1 Enclosure
 SCE-14N1208LPNema-1 Enclosure
 SCE-16N1206LPNema-1 Enclosure
 SCE-16N1208LPNema-1 Enclosure

Installation Information

- * General Purpose Type 1 Enclosures
- * General Purpose Type 1 Enclosures