

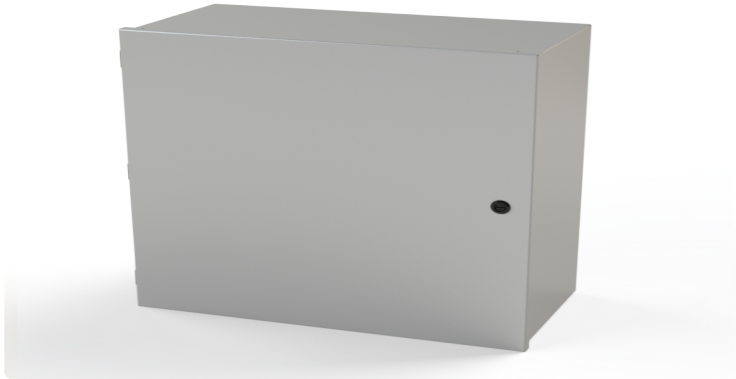


Your Enclosure Source®

Saginaw Control and Engineering  
 95 Midland Road Saginaw, MI 48638-5770  
 (800) 234-6871 - Fax: (989) 799-4524  
 SCE@SaginawControl.com

## SCE-24N2412LP

### Product Specifications:



**Part Number:** SCE-24N2412LP  
**Description:** Nema-1 Enclosure  
**Height:** 24.00"  
**Width:** 24.00"  
**Depth:** 12.00"  
**Price Code:** N1  
**List Price:** \$194.33  
**Catalog Page:** 122  
**Est. Ship Weight:** 53.00 lbs

#### Construction

- \* 0.048 In., 0.063 In. & 0.075 In. carbon steel depending on enclosure size.
- \* Spot weld construction.
- \* 1/4-20 Standoffs provided for mounting optional panels.
- \* Doors open 180 degrees.
- \* Black quarter turn latches.
- \* Latches are opened or closed with a screwdriver.
- \* Ground stud on door.
- \* Mounting holes in back of enclosure.
- \* Subpanel mounting hardware.
- \* Butt Hinge - Black

#### Application

Designed to house electrical controls, instruments and components in areas that do not require oil, water and dust tight protection.

#### Options

Tamper-resistant inserts available. Optional mounting straps available.

#### Finish

ANSI-61 gray powder coating inside and out. Optional sub-panels are powder coated white.

#### Industry Standards - (IS8)

- \* NEMA Type 1
- \* UL Listed Type 1
- \* CSA Type 1
- \* IEC 60529
- \* IP 30

#### Optional Accessories

SCE-128577 Cam, 35 mm Reach - 6 mm External Stop (10 p...  
 SCE-24N24MP Subpanel, Flat Nema-1  
 SCE-DLKLDB Keylocking Door Latch (Black)  
 SCE-DLSBPA Quarter Turn, Nema 1  
 SCE-NMST24 Strap, Nema-1 Mounting

#### Similar Part Numbers

SCE-12N1204LPNema-1 Enclosure  
 SCE-12N1206LPNema-1 Enclosure  
 SCE-12N1208LPNema-1 Enclosure  
 SCE-14N1204LPNema-1 Enclosure  
 SCE-14N1206LPNema-1 Enclosure  
 SCE-14N1208LPNema-1 Enclosure  
 SCE-16N1206LPNema-1 Enclosure  
 SCE-16N1208LPNema-1 Enclosure  
 SCE-16N1606LPNema-1 Enclosure  
 SCE-16N1608LPNema-1 Enclosure

#### Installation Information

- \* General Purpose Type 1 Enclosures
- \* General Purpose Type 1 Enclosures