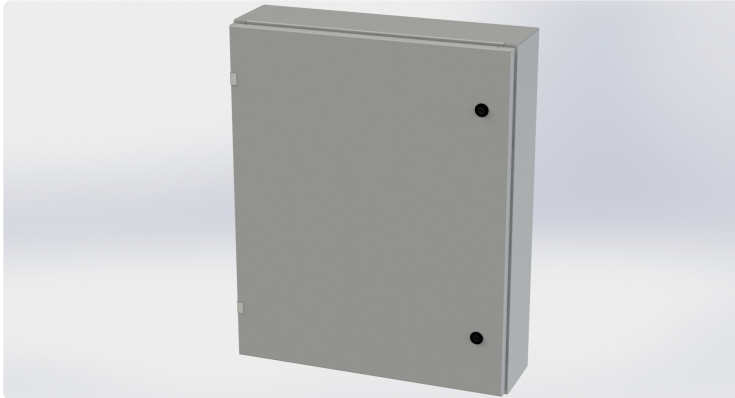




Saginaw Control and Engineering  
 95 Midland Road Saginaw, MI 48638-5770  
 (800) 234-6871 - Fax: (989) 799-4524  
 SCE@SaginawControl.com

## SCE-30EL2406LP

### Product Specifications:



**Part Number:** SCE-30EL2406LP

**Description:** EL Enclosure

**Height:** 30.00"

**Width:** 24.00"

**Depth:** 6.00"

**Price Code:** E3

**List Price:** \$309.63

**Catalog Page:** 90

**Est. Ship Weight:** 31.00 lbs

#### Construction

- \* 0.075 In. carbon steel.
- \* Seams continuously welded and ground smooth.
- \* Flange trough collar around all sides of door opening.
- \* Pour in place oil & water resistant gasket
- \* Collar studs 3/8-16 provided for mounting optional panels.
- \* Concealed hinges.
- \* Removable and interchangeable doors.
- \* Black quarter turn latches.
- \* Latches are opened or closed with a screwdriver.
- \* Mounting holes in back of enclosure.
- \* Mounting hardware, sealing washer and hole plug included.
- \* Removable print pocket furnished if height and width of enclosure is greater than 12 inches.
- \* Ground studs on door and body.

#### Application

Designed to house electrical and electronic controls, instruments and components. Provides protection from dust, oil and water. For outdoor application a drip shield and drain vent is recommended.

For details about the design, performance expectations, applications and design suggestions - See Design Considerations  
[www.saginawcontrol.com/instman/considerations.pdf](http://www.saginawcontrol.com/instman/considerations.pdf)

#### Options

- Optional tamper-resistant inserts are available. - Optional mounting feet available. - Door hardware available. - Interchangeable latches and handles available in the accessory section.

#### Finish

ANSI-61 gray powder coating inside and out. Optional sub-panels are powder coated white.

#### Industry Standards - (IS4)

- \* NEMA Type 3R, 4, 12 and Type 13
- \* UL Listed Type 3R, 4 and 12
- \* CSA Type 3R, 4 and 12
- \* IEC 60529
- \* IP 66

#### Notes

Provision for Lifting Lugs will be included on enclosures with Height >48" and with Depth >16". The Lifting Lug assembly will be included with the enclosure bolt pack.

Special Instructions apply for IS3, IS4 and IS6 to maintain the environmental rating of Type 3R for these parts. Instructions are located on the enclosure door. Drip shield is required on IS3, drip shield is recommended on IS4 and IS6. Drain holes are required on all.

#### Optional Accessories

- SCE-30P24 Subpanel, Bent
- SCE-30P24GALV Subpanel, Bent Galvanized
- SCE-BVK Breather Vent
- SCE-DF30EL24LP Panel, Dead Front (Wall Mount)
- SCE-DS24N4 Shield, Drip
- SCE-ELFM24W EL Flush Mount Frame
- SCE-ELFM30H EL Flush Mount Frame
- SCE-ELMFK4 Foot Kit, EL Mounting (4pc.)
- SCE-ELSP3 KIT, Swing-Out Panel (20 High & Up)
- SCE-RD30EL24 Door, Replacement

#### Similar Part Numbers

- SCE-20EL1206LPEL Enclosure
- SCE-20EL1606LPEL Enclosure
- SCE-20EL1608LPEL Enclosure
- SCE-20EL1610LPEL Enclosure
- SCE-20EL1612LPEL Enclosure
- SCE-20EL2006LPEL Enclosure
- SCE-20EL2008LPEL Enclosure
- SCE-20EL2010LPEL Enclosure
- SCE-20EL2012LPEL Enclosure
- SCE-20EL2408LPEL Enclosure

#### Installation Information

- \* Mounting Foot Kit for Enviroline Enclosures
- \* EL Flush Mount Frame
- \* Drip Shield Kit Assembly
- \* Dead Front Wall Mount Installation Instructions
- \* Swing Panel Assembly for Enviroline Enclosures
- \* Swing Panel ELSP3 for Encl. Height > 16
- \* Dead Front Wall Mount < 20 In Height Installation Instructions
- \* Swing Panel ELSP for Encl. Height <= 16
- \* Sealing Washer Specifications
- \* Enviroline Series Single Door Enclosure
- \* Design Considerations When Specifying Your Enclosure