

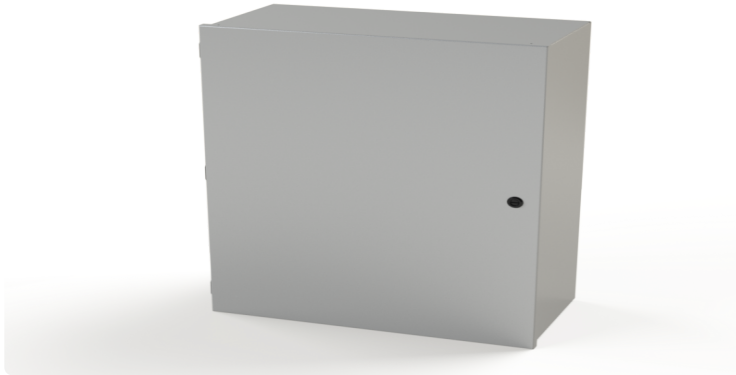


Your Enclosure Source®

Saginaw Control and Engineering
95 Midland Road Saginaw, MI 48638-5770
(800) 234-6871 - Fax: (989) 799-4524
SCE@SaginawControl.com

SCE-30N2412LP

Product Specifications:



Part Number: SCE-30N2412LP
Description: Nema-1 Enclosure
Height: 30.00"
Width: 24.00"
Depth: 12.00"
Price Code: N1
List Price: \$216.79
Catalog Page: 122
Est. Ship Weight: 61.00 lbs

Construction

- * 0.048 In., 0.063 In. & 0.075 In. carbon steel depending on enclosure size.
- * Spot weld construction.
- * 1/4-20 Standoffs provided for mounting optional panels.
- * Doors open 180 degrees.
- * Black quarter turn latches.
- * Latches are opened or closed with a screwdriver.
- * Ground stud on door.
- * Mounting holes in back of enclosure.
- * Subpanel mounting hardware.
- * Butt Hinge - Black

Application

Designed to house electrical controls, instruments and components in areas that do not require oil, water and dust tight protection.

Options

Tamper-resistant inserts available. Optional mounting straps available.

Finish

ANSI-61 gray powder coating inside and out. Optional sub-panels are powder coated white.

Industry Standards - (IS8)

- * NEMA Type 1
- * UL Listed Type 1
- * CSA Type 1
- * IEC 60529
- * IP 30

Optional Accessories

SCE-128577 Cam, 35 mm Reach - 6 mm External Stop (10 p...
SCE-30N24MP Subpanel, Flat Nema-1
SCE-DLKLDB Keylocking Door Latch (Black)
SCE-DLSBPA Quarter Turn, Nema 1
SCE-NMST24 Strap, Nema-1 Mounting

Similar Part Numbers

SCE-20N1606LPNema-1 Enclosure
SCE-20N1608LPNema-1 Enclosure
SCE-20N2006LPNema-1 Enclosure
SCE-20N2008LPNema-1 Enclosure
SCE-20N2010LPNema-1 Enclosure
SCE-24N1606LPNema-1 Enclosure
SCE-24N2006LPNema-1 Enclosure
SCE-24N2008LPNema-1 Enclosure
SCE-24N2010LPNema-1 Enclosure
SCE-24N2406LPNema-1 Enclosure

Installation Information

- * General Purpose Type 1 Enclosures
- * General Purpose Type 1 Enclosures