

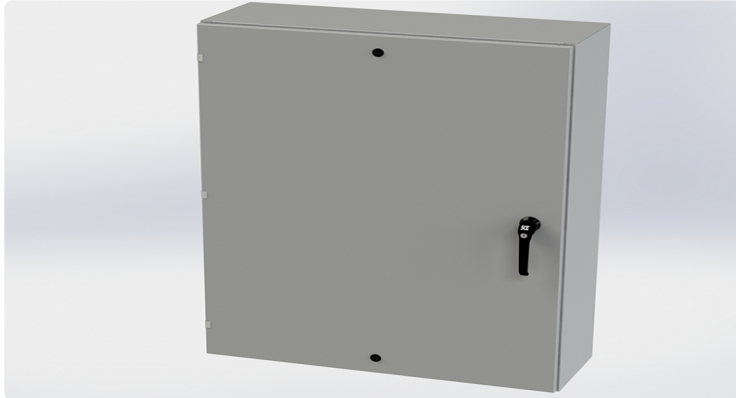


Your Enclosure Source®

Saginaw Control and Engineering
95 Midland Road Saginaw, MI 48638-5770
(800) 234-6871 - Fax: (989) 799-4524
SCE@SaginawControl.com

SCE-48EL3612LPPL

Product Specifications:



Part Number: SCE-48EL3612LPPL
Description: EL LPPL Enclosure
Height: 48.00"
Width: 36.00"
Depth: 12.00"
Price Code: E3
List Price: \$711.44
Catalog Page: 96
Est. Ship Weight: 173.00 lbs

Construction

- * 0.075 In. carbon steel.
- * Seams continuously welded and ground smooth.
- * Flange trough collar around all sides of door opening.
- * Collar studs provided for mounting optional sub-panels.
- * Mounting holes in back of enclosure for wall mounting.
- * Mounting hardware, sealing washer and hole plugs included.
- * Concealed hinges.
- * Removable and interchangeable doors.
- * Black zinc die cast keylocking/padlocking handle.
- * 3-point latching mechanism.
- * Black quarter turn latches as required.
- * Removable print pocket.
- * Pour in place oil & water resistant gasket
- * Ground stud on door & body.

Application

Designed to house electrical and electronic controls, instrumentation and components in indoor or outdoor locations. For outdoor application a drip shield and drain vent is recommended.

For details about the design, performance expectations, applications and design suggestions - See Design Considerations
www.saginawcontrol.com/instman/considerations.pdf

Finish

ANSI-61 gray powder coating inside and out. Optional sub-panels are powder coated white.

Industry Standards - (IS4)

- * NEMA Type 3R, 4, 12 and Type 13
- * UL Listed Type 3R, 4 and 12
- * CSA Type 3R, 4 and 12
- * IEC 60529
- * IP 66

Notes

Provision for Lifting Lugs on enclosures when Height >48" and Depth >16". The Lifting Lug assembly will be included with the enclosure bolt pack.

Special Instructions apply for IS3, IS4 and IS6 to maintain the environmental rating of Type 3R for these parts. Instructions are located on the enclosure door. Drip shield is required on IS3, drip shield is recommended on IS4 and IS6. Drain holes are required on all.

Optional Accessories

- SCE-48P36 Subpanel, Bent
- SCE-48P36GALV Subpanel, Bent Galvanized
- SCE-BVK Breather Vent
- SCE-DF48EL36LP Panel, Dead Front (Wall Mount)
- SCE-DS36N4 Shield, Drip
- SCE-ELMFK4 Foot Kit, EL Mounting (4pc.)
- SCE-ELSP3 KIT, Swing-Out Panel (20 High & Up)
- SCE-RD48EL36LPPL Door, Replacement

Similar Part Numbers

- SCE-36EL2412LPPEL LPPL Enclosure
- SCE-36EL3012LPPEL LPPL Enclosure
- SCE-36EL3612LPPEL LPPL Enclosure
- SCE-42EL3612LPPEL LPPL Enclosure
- SCE-48EL3616LPPEL LPPL Enclosure
- SCE-60EL3612LPPEL LPPL Enclosure
- SCE-60EL3616LPPEL LPPL Enclosure
- SCE-60EL3624LPPEL LPPL Enclosure

Installation Information

- * Drip Shield Kit Assembly
- * EL Flush Mount Frame
- * Dead Front Wall Mount Installation Instructions
- * Swing Panel ELSP3 for Encl. Height > 16
- * Service Parts Wall Mount Enclosures
- * Design Considerations When Specifying Your Enclosure