

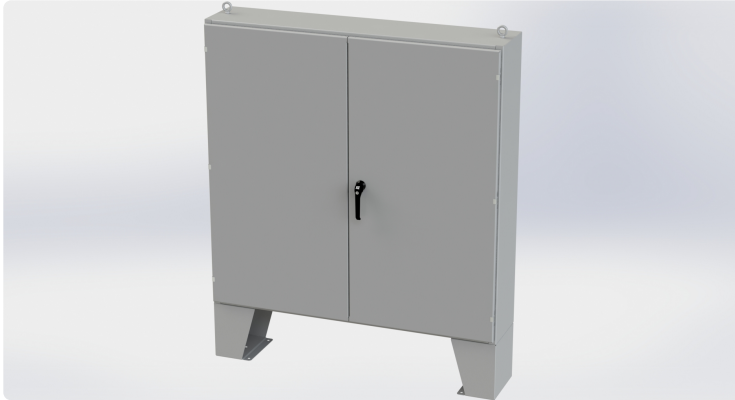


Your Enclosure Source®

Saginaw Control and Engineering
95 Midland Road Saginaw, MI 48638-5770
(800) 234-6871 - Fax: (989) 799-4524
SCE@SaginawControl.com

SCE-606012LP

Product Specifications:



Part Number: SCE-606012LP
Description: 2DR LP Enclosure
Height: 60.00"
Width: 60.00"
Depth: 12.00"
Price Code: A2
List Price: \$1,830.79
Catalog Page: 134
Est. Ship Weight: 436.00 lbs

Construction

- * 0.104 In. carbon steel.
- * Flange trough collar around all sides of door opening.
- * Seams continuously welded and ground smooth.
- * Strong, rigid construction with body stiffeners.
- * Gasketed overlapping doors eliminate need for center post.
- * Black zinc die cast keylocking/padlocking handle.
- * 3-point latching mechanism.
- * Latch rods have ramp shoes for easier door closing.
- * Concealed hinges.
- * Removable print pocket provided on door with 3-point latch.
- * 12 inch removable floor stands.
- * Heavy duty lifting eyes.
- * Panel supports.
- * Pour in place oil & water resistant gasket
- * Collar studs 3/8-16 provided for mounting optional panels.
- * Ground stud on door and body.
- * Hole plugs provided to seal holes in bottom of enclosure.

Application

Designed to house electrical and electronic controls, instruments and compartments. Provides protection from dust, oil and water. For outdoor application a drip shield and drain vent is recommended.

For Details about the design, performance expectations, applications and design suggestions - See Design Considerations
www.saginawcontrol.com/instman/considerations.pdf

Finish

ANSI-61 gray powder coating inside and out. Optional sub-panels are powder coated white.

Industry Standards - (IS3)

- * NEMA Type 3R, 12 and Type 13
- * UL Listed Type 3R and 12
- * CSA Type 3R and 12
- * IEC 60529
- * IP 55

Notes

Special Instructions apply for IS3, IS4 and IS6 to maintain the environmental rating of Type 3R for these parts. Instructions are located on the enclosure door. Drip shield is required on IS3, drip shield is recommended on IS4 and IS6. Drain holes are required on all.

Accessories Included

- SCE-HS2S Hole Seal, 2 Inch Square

Optional Accessories

- SCE-13ELJEXPP Pocket, Exterior Print
- SCE-19ELJEXPP Pocket, Exterior Print
- SCE-60P60 Subpanel, Bent
- SCE-60P60GALV Subpanel, Bent Galvanized
- SCE-BVK Breather Vent
- SCE-DF6060 Panel, Dead Front (Overlapping Two Door)
- SCE-DS60N4 Shield, Drip
- SCE-FS1212 Shelf, Folding
- SCE-FS1818 Shelf, Folding
- SCE-FS2424 Shelf, Folding
- SCE-LF18 Fixture, LED Light
- SCE-LF18NO Fixture, LED Light w/o Outlet
- SCE-RD6060 Door, Replacement
- SCE-RDL6060 Door, Replacement

Similar Part Numbers

- SCE-604808LP2DR LP Enclosure
- SCE-604810LP2DR LP Enclosure
- SCE-604812LP2DR LP Enclosure
- SCE-604816LP2DR LP Enclosure
- SCE-604824LP2DR LP Enclosure
- SCE-606010LP2DR LP Enclosure
- SCE-606016LP2DR LP Enclosure
- SCE-606024LP2DR LP Enclosure
- SCE-726010ULP2DR LP Enclosure
- SCE-726012ULP2DR LP Enclosure

Installation Information

- * Drip Shield Kit Assembly
- * Folding Shelf Hole Pattern
- * Dead Front Overlapping Door Installation Instructions
- * LED Light Fixture
- * Hole Seal
- * Overlapping Two Door Enclosures
- * Design Considerations When Specifying Your Enclosure