

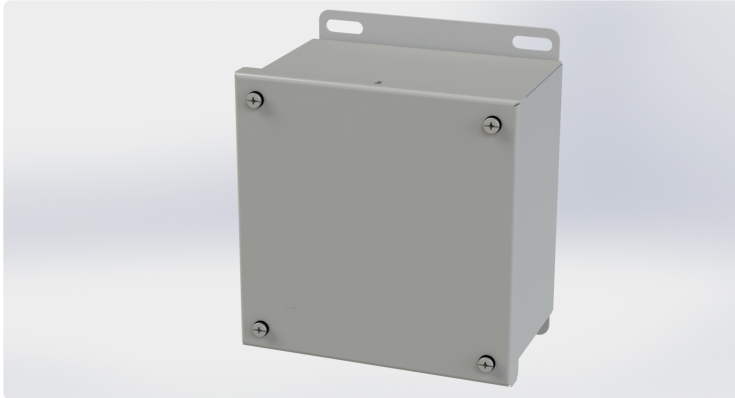


Your Enclosure Source®

Saginaw Control and Engineering  
 95 Midland Road Saginaw, MI 48638-5770  
 (800) 234-6871 - Fax: (989) 799-4524  
 SCE@SaginawControl.com

## SCE-606SC

### Product Specifications:



**Part Number:** SCE-606SC  
**Description:** SC Enclosure  
**Height:** 6.13"  
**Width:** 6.00"  
**Depth:** 4.00"  
**Price Code:** A1  
**List Price:** \$50.17  
**Catalog Page:** 88  
**Est. Ship Weight:** 5.00 lbs

#### Construction

- \* 0.063 In. carbon steel.
- \* Seams continuously welded and ground smooth, no holes or knock-outs.
- \* Captivated cover screws thread into sealed wells.
- \* Pour in place oil & water resistant gasket
- \* 10-32 Standoffs provided for mounting optional panels.

#### Application

Designed for use as electrical junction boxes, terminal wiring boxes, instrument housings, and electrical control enclosures. Provides protection from dust, oil and water.

#### Finish

ANSI-61 gray powder coating inside and out. Optional sub-panels are powder coated white.

#### Industry Standards - (IS4)

- \* NEMA Type 3R, 4, 12 and Type 13
- \* UL Listed Type 3R, 4 and 12
- \* CSA Type 3R, 4 and 12
- \* IEC 60529
- \* IP 66

#### Notes

Special Instructions apply for IS3, IS4 and IS6 to maintain the environmental rating of Type 3R for these parts. Instructions are located on the enclosure door. Drip shield is required on IS3, drip shield is recommended on IS4 and IS6. Drain holes are required on all.

#### Optional Accessories

SCE-102534 Screw, 10/32 x 5/8 in. SS Captive w/ retainer (12)  
 SCE-6P6 Subpanel, Flat

#### Similar Part Numbers

SCE-10086SCSC Enclosure  
 SCE-1008SCSC Enclosure  
 SCE-10106SCSC Enclosure  
 SCE-1010SCSC Enclosure  
 SCE-121010SCSC Enclosure  
 SCE-1210SCSC Enclosure  
 SCE-1212SCSC Enclosure  
 SCE-1412SCSC Enclosure  
 SCE-1614SCSC Enclosure  
 SCE-4044SCSC Enclosure

#### Installation Information

- \* Screw Cover Enclosures