

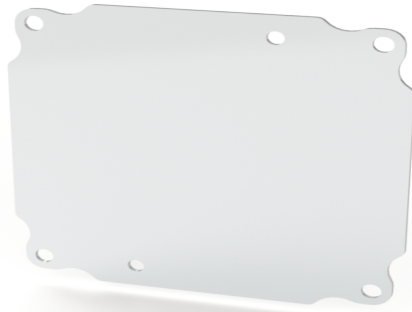


Your Enclosure Source®

Saginaw Control and Engineering  
 95 Midland Road Saginaw, MI 48638-5770  
 (800) 234-6871 - Fax: (989) 799-4524  
 SCE@SaginawControl.com

## SCE-6P6

### Product Specifications:



**Part Number:** SCE-6P6  
**Description:** Subpanel, Flat  
**Height:** 5.00"  
**Width:** 5.00"  
**Depth:** 0.08"  
**Price Code:** P3  
**List Price:** \$3.61  
**Catalog Page:** 418  
**Est. Ship Weight:** 1.00 lbs

#### Construction

- \* Subpanel, Bent - 0.125 In. Carbon Steel.
- \* Subpanel, Flat - 0.075 In. Carbon Steel.

#### Finish

Powder Coated White.

#### Industry Standards - (IS17)

- \* NEMA Not Applicable
- \* UL Not Applicable
- \* CSA N/A

#### Similar Part Numbers

SCE-10P10Subpanel, Flat  
 SCE-10P6Subpanel, Flat  
 SCE-10P8Subpanel, Flat  
 SCE-12DLP12Subpanel, Flat  
 SCE-12P10Subpanel, Flat  
 SCE-12P12Subpanel, Flat  
 SCE-12P12CSubpanel, Flat  
 SCE-12P16CSubpanel, Flat  
 SCE-12P6Subpanel, Flat  
 SCE-14P12Subpanel, Flat

#### Installation Information

- \* Sub-Plate Layout & Grounding for 3/8-16