

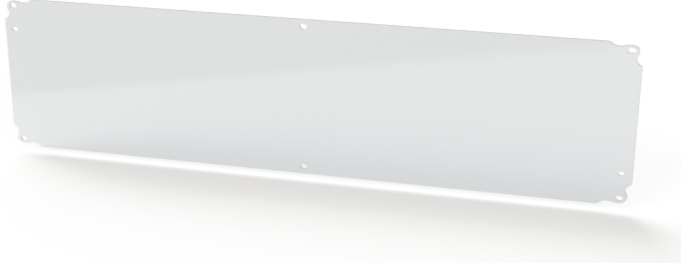


Your Enclosure Source®

Saginaw Control and Engineering  
 95 Midland Road Saginaw, MI 48638-5770  
 (800) 234-6871 - Fax: (989) 799-4524  
 SCE@SaginawControl.com

## SCE-9P24L

### Product Specifications:



**Part Number:** SCE-9P24L  
**Description:** Subpanel, ELJ Trough  
**Height:** 8.00"  
**Width:** 23.00"  
**Depth:** 0.08"  
**Price Code:** P3  
**List Price:** \$29.14  
**Catalog Page:** 427  
**Est. Ship Weight:** 4.00 lbs

#### Construction

- \* 0.075 In. carbon steel.

#### Application

Designed to be used with Enviroline® Trough Enclosures. Made of heavy gauge steel.

#### Finish

Powder coated white.

#### Industry Standards - (IS17)

- \* NEMA Not Applicable
- \* UL Not Applicable
- \* CSA N/A

#### Notes

Special Instructions apply for IS3, IS4 and IS6 to maintain the environmental rating of Type 3R for these parts. Instructions are located on the enclosure door. Drip shield is required on IS3, drip shield is recommended on IS4 and IS6. Drain holes are required on all.

#### Similar Part Numbers

SCE-9P12LSubpanel, ELJ Trough  
 SCE-9P18LSubpanel, ELJ Trough  
 SCE-9P18LGALVSubpanel, ELJ Trough Galvannealed  
 SCE-9P24LGALVSubpanel, ELJ Trough Galvannealed  
 SCE-9P30LSubpanel, ELJ Trough  
 SCE-9P30LGALVSubpanel, ELJ Trough Galvannealed  
 SCE-9P36LSubpanel, ELJ Trough  
 SCE-9P36LGALVSubpanel, ELJ Trough Galvannealed