

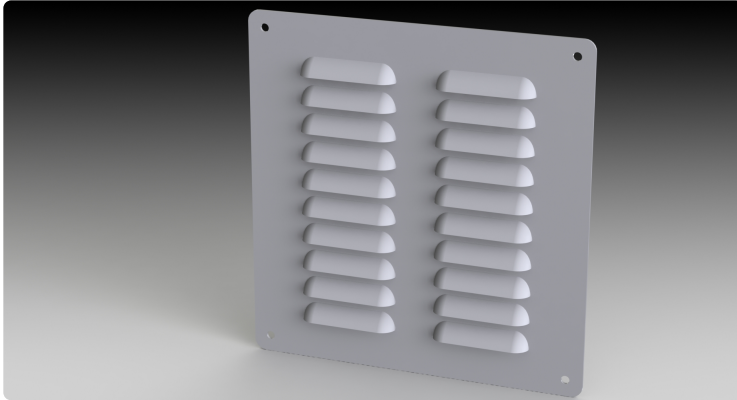


Your Enclosure Source®

Saginaw Control and Engineering  
 95 Midland Road Saginaw, MI 48638-5770  
 (800) 234-6871 - Fax: (989) 799-4524  
 SCE@SaginawControl.com

## SCE-AVK66

### Product Specifications:



**Part Number:** SCE-AVK66  
**Description:** Kit, Louver  
**Height:** 7.88"  
**Width:** 7.50"  
**Depth:** 0.43"  
**Price Code:** P2  
**List Price:** \$22.60  
**Catalog Page:** 381  
**Est. Ship Weight:** 2.00 lbs

#### Application

Designed for ventilation in enclosures where excessive heat or moisture is a problem. Kits may be installed in the field by making a cutout of the proper size. Louver plates are made of heavy gauge steel and powder coated ANSI-61 gray. "SS" parts are made of Type 304 stainless with #4 brushed finish.

#### Industry Standards - (IS17)

- \* NEMA Not Applicable
- \* UL Not Applicable
- \* CSA N/A

#### Optional Accessories

SCE-FLT66 Assembly, Filter

#### Similar Part Numbers

SCE-AVK23Kit, Louver  
 SCE-AVK23SSKit, S.S. Louver  
 SCE-AVK33Kit, Louver  
 SCE-AVK33SSKit, S.S. Louver  
 SCE-AVK34Kit, Louver  
 SCE-AVK34SSKit, S.S. Louver  
 SCE-AVK43Kit, Louver  
 SCE-AVK43SSKit, S.S. Louver  
 SCE-AVK44Kit, Louver  
 SCE-AVK44SSKit, S.S. Louver

#### Installation Information

- \* Louver And Filter Kit