

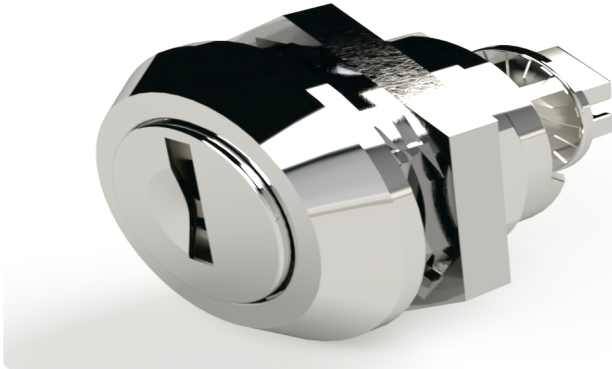


Your Enclosure Source®

Saginaw Control and Engineering
 95 Midland Road Saginaw, MI 48638-5770
 (800) 234-6871 - Fax: (989) 799-4524
 SCE@SaginawControl.com

SCE-DLKLD

Product Specifications:



Part Number: SCE-DLKLD
Description: Keylocking Door Latch (Chrome)
Height: 1.33"
Width: 1.10"
Depth: 1.10"
Price Code: P2
List Price: \$27.32
Catalog Page: 382
Est. Ship Weight: 1.00 lbs
Cam: 28 mm Grip Cam Included
Cam: 6 mm grip Cam Included for Nema 1 Enclosures

Application

Designed to replace black quarter turn latches when additional security is required.

Industry Standards - (IS17)

- * NEMA Not Applicable
- * UL Not Applicable
- * CSA N/A

Optional Accessories

SCE-K333 Keys (Set of 2) for Standard Quarter Turn

Similar Part Numbers

SCE-DLKLDDBKeylocking Door Latch (Black)
 SCE-DLKLDDB-25Keylocking Door Latch (Black) - Bulk

Installation Information