

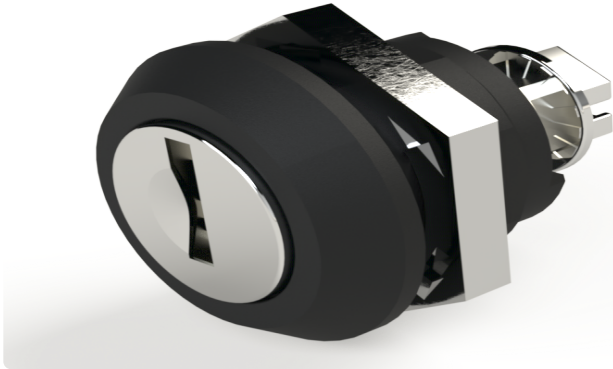


Your Enclosure Source®

Saginaw Control and Engineering  
95 Midland Road Saginaw, MI 48638-5770  
(800) 234-6871 - Fax: (989) 799-4524  
SCE@SaginawControl.com

## SCE-DLKLDB

### Product Specifications:



**Part Number:** SCE-DLKLDB  
**Description:** Keylocking Door Latch (Black)  
**Height:** 1.33"  
**Width:** 1.10"  
**Depth:** 1.10"  
**Price Code:** P2  
**List Price:** \$27.99  
**Catalog Page:** 382  
**Est. Ship Weight:** 1.00 lbs  
**Cam:** 28 mm Grip Cam Included  
**Cam:** 6 mm grip Cam Included for Nema 1 Enclosures

#### Application

Designed to replace black quarter turn latches when additional security is required.

#### Industry Standards - (IS17)

- \* NEMA Not Applicable
- \* UL Not Applicable
- \* CSA N/A

#### Optional Accessories

SCE-K333 Keys (Set of 2) for Standard Quarter Turn

#### Similar Part Numbers

SCE-DLKLDDKeylocking Door Latch (Chrome)  
SCE-DLKLDB-25Keylocking Door Latch (Black) - Bulk

#### Installation Information