

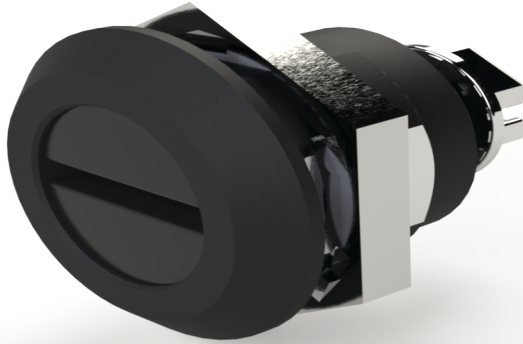


Your Enclosure Source®

Saginaw Control and Engineering
 95 Midland Road Saginaw, MI 48638-5770
 (800) 234-6871 - Fax: (989) 799-4524
 SCE@SaginawControl.com

SCE-DLSBB

Product Specifications:



Part Number: SCE-DLSBB
Description: Door Latch, Slotted (Black)
Height: 2.00"
Width: 2.00"
Depth: 1.00"
Price Code: P2
List Price: \$17.38
Catalog Page: 382
Est. Ship Weight: 1.00 lbs

Construction

- * 28 mm Grip Cam Included
- * 6 mm grip Cam Included for Nema 1 Enclosures

Application

Designed to replace black quarter turn latches when additional security is required.

Industry Standards - (IS17)

- * NEMA Not Applicable
- * UL Not Applicable
- * CSA N/A

Similar Part Numbers

- SCE-DLSBLatch, Slotted 2 x 4 Door (Chrome)
- SCE-DLSBPAQuarter Turn, Nema 1
- SCE-DLSSBLatch, Slotted 2 x 4 Door (Stainless)

Installation Information

- * Twist Latch Quarter Turn