

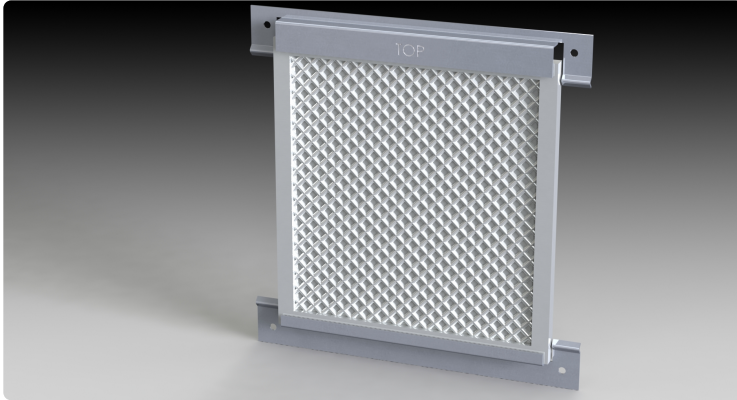


Your Enclosure Source®

Saginaw Control and Engineering
 95 Midland Road Saginaw, MI 48638-5770
 (800) 234-6871 - Fax: (989) 799-4524
 SCE@SaginawControl.com

SCE-FLT33

Product Specifications:



Part Number: SCE-FLT33
Description: Assembly, Filter
Height: 4.00"
Width: 4.00"
Depth: 0.50"
Price Code: P2
List Price: \$22.35
Catalog Page: 381
Est. Ship Weight: 1.00 lbs

Application

Designed for use with louver kit. Aluminum filter brackets with mounting holes to align with louver mounting holes and a washable aluminum air filter to provide good air filtration.

Industry Standards - (IS17)

- * NEMA Not Applicable
- * UL Not Applicable
- * CSA N/A

Optional Accessories

- SCE-AVK33 Kit, Louver
- SCE-AVK33SS Kit, S.S. Louver

Similar Part Numbers

- SCE-FLT34 Assembly, Filter
- SCE-FLT43 Assembly, Filter
- SCE-FLT44 Assembly, Filter
- SCE-FLT64 Assembly, Filter
- SCE-FLT66 Assembly, Filter
- SCE-FLT812 Assembly, Filter
- SCE-FLT84 Assembly, Filter
- SCE-FLT86 Assembly, Filter
- SCE-FLT88 Assembly, Filter

Installation Information

- * Louver And Filter Kit