

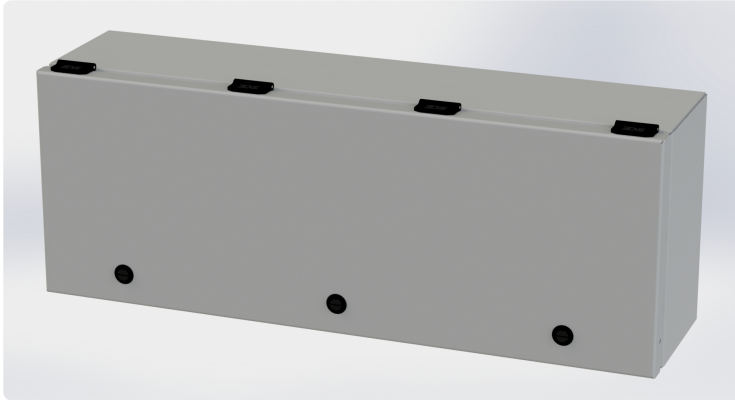


Your Enclosure Source®

Saginaw Control and Engineering
95 Midland Road Saginaw, MI 48638-5770
(800) 234-6871 - Fax: (989) 799-4524
SCE@SaginawControl.com

SCE-L9246ELJ

Product Specifications:



Part Number: SCE-L9246ELJ
Description: ELJ Trough Enclosure
Height: 9.00"
Width: 24.00"
Depth: 6.00"
Price Code: E1
List Price: \$185.82
Catalog Page: 80
Est. Ship Weight: 11.00 lbs

Construction

- * 0.063 In. carbon steel.
- * Seams continuously welded and ground smooth.
- * Flange trough collar around all sides of door opening.
- * Pour in place oil & water resistant gasket
- * 10-32 Standoffs provided for mounting optional panels.
- * Removable hinges.
- * Doors open 180 degrees.
- * Black mini quarter turn latches.
- * Latches are opened or closed with a screwdriver.
- * Sealing washers and hole plugs included.
- * Ground stud on door & body.
- * Mounting holes in back of enclosure.
- * Mounting feet included.
- * Padlocking or keylocking latches, and tamper-resistant hardware is available.

Application

Designed to house electrical controls, instruments and components used in an indoor or outdoor environment to provide a degree of protection for the equipment inside the enclosure against ingress of solid foreign objects (falling dirt); and provide a degree of protection with respect to the harmful effects on the equipment due to the ingress of water (rain, sleet, snow). For outdoor application a drip shield and drain vent is recommended.

For details about the design, performance expectations, applications and design suggestions - See Design Considerations
www.saginawcontrol.com/instman/considerations.pdf

Finish

Ansi -61 gray powder coating inside and out.

Industry Standards - (IS4)

- * NEMA Type 3R, 4, 12 and Type 13
- * UL Listed Type 3R, 4 and 12
- * CSA Type 3R, 4 and 12
- * IEC 60529
- * IP 66

Notes

Special Instructions apply for IS3, IS4 and IS6 to maintain the environmental rating of Type 3R for these parts. Instructions are located on the enclosure door. Drip shield is required on IS3, drip shield is recommended on IS4 and IS6. Drain holes are required on all.

Accessories Included

SCE-ELJMFK Mtg Foot Kit (ELJ Enclosure)

Optional Accessories

SCE-9P24L Subpanel, ELJ Trough
SCE-BVK Breather Vent
SCE-MINQ6MS Latch, Black Mini Q-Turn W/6mm SQ Insert ...
SCE-MINQKLB Latch, Mini Keylocking Lever Knob (Black)
SCE-MINQLB Latch, Black Mini Lever
SCE-MINQPL Bracket, Mini Quarter Turn Padlock Bracket

Similar Part Numbers

SCE-L9126ELJELJ Trough Enclosure
SCE-L9128ELJELJ Trough Enclosure
SCE-L9186ELJELJ Trough Enclosure
SCE-L9188ELJELJ Trough Enclosure
SCE-L9248ELJELJ Trough Enclosure
SCE-L9306ELJELJ Trough Enclosure
SCE-L9308ELJELJ Trough Enclosure
SCE-L9366ELJELJ Trough Enclosure
SCE-L9368ELJELJ Trough Enclosure

Installation Information

- * Mounting Foot Kit for (ELJ) Enviroline
- * Service Parts Wall Mount Junction & PB Enclosures