

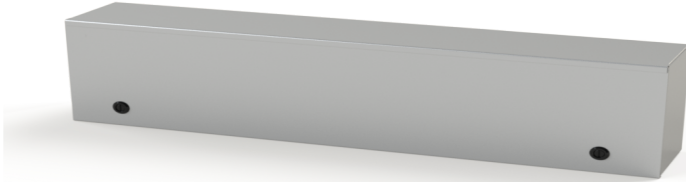


Your Enclosure Source®

Saginaw Control and Engineering  
 95 Midland Road Saginaw, MI 48638-5770  
 (800) 234-6871 - Fax: (989) 799-4524  
 SCE@SaginawControl.com

## SCE-L9N366LP

### Product Specifications:



**Part Number:** SCE-L9N366LP  
**Description:** Nema-1 Enclosure  
**Height:** 9.00"  
**Width:** 36.00"  
**Depth:** 6.00"  
**Price Code:** N1  
**List Price:** \$142.13  
**Catalog Page:** 126  
**Est. Ship Weight:** 25.90 lbs

#### Construction

- \* 0.048 and 0.060 carbon steel depending on its size.
- \* Spot weld construction
- \* 10-32 Standoffs provided for mounting optional sub-panels
- \* Removable Cover
- \* Black quarter turn latches
- \* Latches are opened or closed with a screwdriver
- \* Ground stud on door and body
- \* Mounting holes in back of enclosure
- \* Sub-panel mounting hardware included

#### Application

Designed to house electrical controls, instruments and components in areas that do not require oil, water and dust tight protection. For installation information, consult our Installation Manual at [www.saginawcontrol.com](http://www.saginawcontrol.com)

#### Finish

ANSI-61 gray powder coated inside and out.  
 Optional sub-panels powder coated white.

#### Industry Standards - (IS8)

- \* NEMA Type 1
- \* UL Listed Type 1
- \* CSA Type 1
- \* IEC 60529
- \* IP 30

#### Optional Accessories

- SCE-9N36MP Nema 1 Sub-plate
- SCE-DLKLDB Keylocking Door Latch (Black)

#### Similar Part Numbers

- SCE-L9N246LP Nema-1 Enclosure
- SCE-L9N248LP Nema-1 Enclosure
- SCE-L9N306LP Nema-1 Enclosure
- SCE-L9N308LP Nema-1 Enclosure
- SCE-L9N368LP Nema-1 Enclosure

#### Installation Information

- \* Service Prts NEMA 1 Enclosures
- \* General Purpose Type 1 Enclosures