

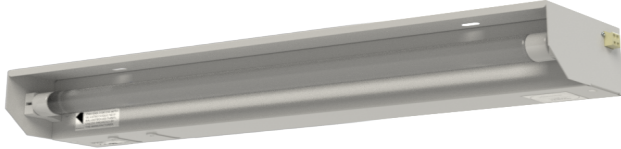


Your Enclosure Source®

Saginaw Control and Engineering  
 95 Midland Road Saginaw, MI 48638-5770  
 (800) 234-6871 - Fax: (989) 799-4524  
 SCE@SaginawControl.com

## SCE-LF18NO

### Product Specifications:



**Part Number:** SCE-LF18NO  
**Description:** Fixture, LED Light w/o Outlet  
**Height:** 2.75"  
**Width:** 18.18"  
**Depth:** 4.00"  
**Price Code:** P2  
**List Price:** \$206.35  
**Catalog Page:** 392  
**Est. Ship Weight:** 6.00 lbs  
**Operating Temperature:** -4 to 140 Degrees F

#### Construction

- \* 4000K Frosted White
- \* 18 inch 850 Lumens
- \* 24 inch 900 Lumens
- \* LF1824 24VDC 500 Lumens

#### Application

LED light fixture is designed to provide interior lighting for an enclosure. Can be mounted to light channels in the top of an enclosure or on the front flange of most enclosures. Door activated adjustable switch, switch can be removed and relocated. Terminal block on each end of fixture, making it easy to wire and daisy chain multiple lights continuously. LED bulb with PVC frosted white protective light diffuser included. Housing made from steel and powder coated white. Units with convenience receptacle outlet are 120 VAC with ground 50/60 HZ. Without convenience receptacle outlet 100 to 277 VAC 50/60 HZ. With the exception of SCE-LF1824VDC.

#### Industry Standards - (IS24)

- \* UL Component Recognized

#### Notes

UL File # E358386

#### Optional Accessories

SCE-LEDB18 Bulb, 18 Inch LED

#### Similar Part Numbers

SCE-LF18Fixture, LED Light  
 SCE-LF1824VDCFixture, LED Light 24VDC  
 SCE-LF24Fixture, LED Light  
 SCE-LF24NOFixture, LED Light w/o Outlet

#### Installation Information

- \* LED Light Fixture