

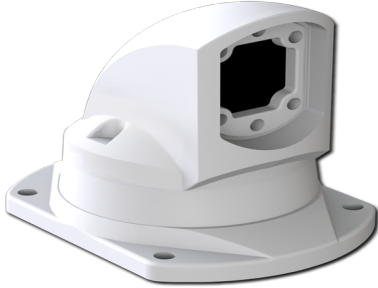


Your Enclosure Source®

Saginaw Control and Engineering
 95 Midland Road Saginaw, MI 48638-5770
 (800) 234-6871 - Fax: (989) 799-4524
 SCE@SaginawControl.com

SCE-SA310TMJ

Product Specifications:



Part Number: SCE-SA310TMJ
Description: Top Mounted Joint, 310 Swivel
Height: 7.17"
Width: 5.71"
Depth: 7.68"
Price Code: C3
List Price: \$357.78
Catalog Page: 398
Est. Ship Weight: 8.60 lbs

Construction

- * Cast aluminum couplings.
- * Extruded aluminum tubes (6060T66).
- * Rotating couplings have adjustable tensioner brakes to control movement while in use.
- * Rigid, durable bearing in all rotating couplings withstand the stress of continuous use.
- * Open or closed tube design.
- * Open tube allows for easy access to lay in wiring, with easy to install push fit rubber cover.
- * Closed tube acts as conduit for feeding wiring.
- * Removable access covers on all couplings with 90 degree turn.
- * Hardware and gasket included for installation of coupling to tube.

Application

Designed for use with the SCE HMI enclosures, allows operators to easily move or position an HMI to an ergonomic and comfortable working position. Made of heavy-duty, reliable construction. Suspension Systems can be assembled in a multitude of configurations that allow for machine mount, wall mount, top mount, and floor mount options.

Finish

RAL 7035 powder coated finish.

*Suspension System parts cannot be custom painted

Industry Standards - (IS17)

- * NEMA Not Applicable
- * UL Not Applicable
- * CSA N/A

Notes

*Suspension System parts cannot be custom painted

Similar Part Numbers

SCE-SA08TCClosed Tube Suspension Profile
 SCE-SA10TOpen Tube Suspension Profile
 SCE-SA230WHWall Hinge, 230 Swivel
 SCE-SA310JIntermediate Joint, 310 Swivel
 SCE-SA310JDIntermediate Joint, 310 Swivel Down Drop
 SCE-SA320ACAngle Coupling, 320 Swivel
 SCE-SA360CCoupling, 360 Swivel
 SCE-SA45IAInclining Adapter, 45 deg
 SCE-SA90AAngle, 90 deg
 SCE-SACB11T31Counter Balance Arm

Installation Information

- * SA Suspension System
- * Suspension System Counter Balance Configurations
- * SCE-SAMM