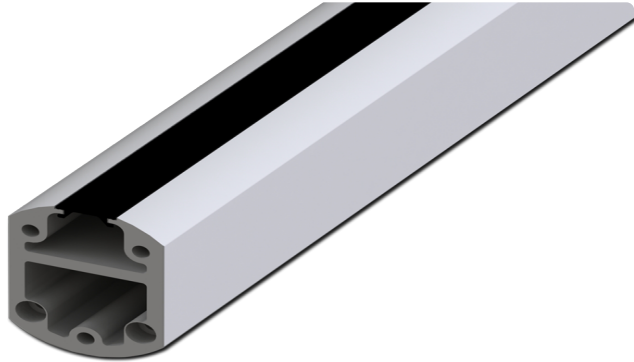




*Your Enclosure Source®*

Saginaw Control and Engineering  
 95 Midland Road Saginaw, MI 48638-5770  
 (800) 234-6871 - Fax: (989) 799-4524  
 SCE@SaginawControl.com

## SCE-SA79T



## Product Specifications:

**Part Number:** SCE-SA79T  
**Description:** Open Tube Suspension Profile  
**Height:** 78.74"  
**Width:** 2.56"  
**Depth:** 3.54"  
**Price Code:** C3  
**List Price:** \$416.08  
**Catalog Page:** 398  
**Est. Ship Weight:** 26.46 lbs

### Construction

- \* Cast aluminum couplings.
- \* Extruded aluminum tubes (6060T66).
- \* Rotating couplings have adjustable tensioner brakes to control movement while in use.
- \* Rigid, durable bearing in all rotating couplings withstand the stress of continuous use.
- \* Open or closed tube design.
- \* Open tube allows for easy access to lay in wiring, with easy to install push fit rubber cover.
- \* Closed tube acts as conduit for feeding wiring.
- \* Removable access covers on all couplings with 90 degree turn.
- \* Hardware and gasket included for installation of coupling to tube.

### Application

Designed for use with the SCE HMI enclosures, allows operators to easily move or position an HMI to an ergonomic and comfortable working position. Made of heavy-duty, reliable construction. Suspension Systems can be assembled in a multitude of configurations that allow for machine mount, wall mount, top mount, and floor mount options.

### Finish

RAL 7035 powder coated finish.

\*Suspension System parts cannot be custom painted

### Industry Standards - (IS17)

- \* NEMA Not Applicable
- \* UL Not Applicable
- \* CSA N/A

### Notes

\*Suspension System parts cannot be custom painted

### Similar Part Numbers

SCE-SA79TCClosed Tube Suspension Profile

### Installation Information

- \* SA Suspension System
- \* Suspension System Counter Balance Configurations
- \* SCE-SAMM