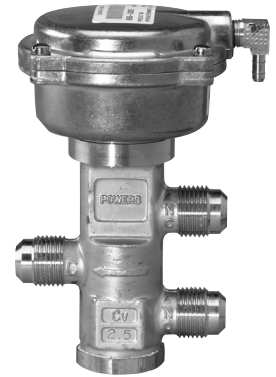


Three-Way Water Mixing Valves

*1/2" Flared Type
Mixing*



656 Powermite
Three-Way Water Mixing Valve.

Description

Designed for water mixing applications, the 656 Powermite Three-way Mixing Valve is a high-grade bronze body forged with connections for 1/2-inch OD SAE flare fittings.

Features

- Enclosed actuator protects spring, diaphragm
- Compact size
- Actuator can be rotated to facilitate air connection
- Modified equal percentage NO port characteristic
- Dual valve stem packing allows upper packing ring replacement without system shutdown

Applications

The 656 Powermite Three-way Water Mix Valve are recommended for mixing of hot or chilled water for convectors, fan coil units, radiation, reheat coils and similar terminal units which require water mixing. The dual sealing packed design is excellent for applications for higher-pressure systems encountered in high rise buildings. The compact size is excellent for use when space is limited.

A-237

Valves

656 Powermite Three-Way Specifications

Valve Size	1/2" (15 mm)	Effective Diaphragm Area	3.4 in. ² (22 cm ²)
Valve Body Style	Flared End	Max. Diaphragm Pressure	30 psi (207 kPa)
Valve Action	Upper Seat NC/Lower Seat NO	Air Connection	1/8" NPT
Stem Travel	3/8" (10 mm)	Controlled Medium	Water, Glycol Solution
Valve Body Material	Bronze	Max. Medium Temperature	250°F (121°C)
Valve Body Rating	ANSI Class 250	Max. Differential Pressure for Modulating Service	
Standard Spring Ranges with 10 psi (69 kPa)		Between Inlets.....	25 psi (172 kPa)
Differential Pressure.....	3 to 8 psi (21 to 55 kPa)	Between Inlet & Outlet.....	25 psi (172 kPa)
	10 to 15 psi (69 to 103 kPa)	Shipping Weight	2.0 lb. (0.9 kg)
Nominal Spring Span	5 psi (35 kPa)		

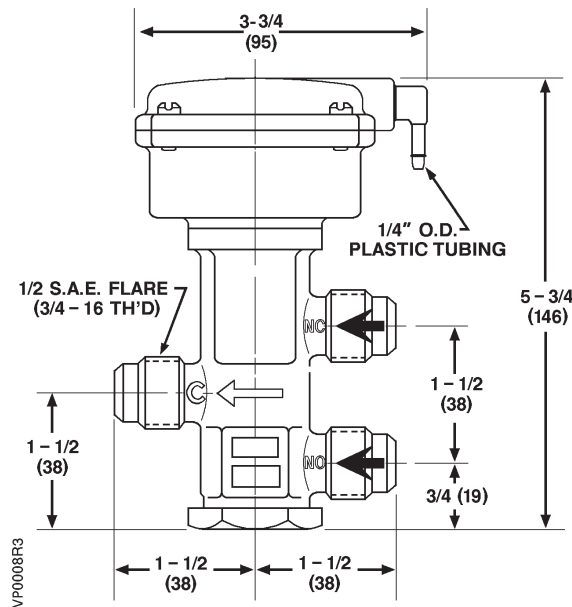
656 Powermite Three-Way Product Ordering

Valve Size	Cv	Spring Range	Part No.
1/2" (15 mm)	2.5	10 to 15 lb. (69 to 103 kPa)	656-0009
1/2" (15 mm)	2.5	3 to 8 lb. (21 to 55 kPa)	656-0010
1/2" (15 mm)	1.5	3 to 8 lb. (21 to 55 kPa)	656-0011

A-238

Valves

Dimensions and Weights



Dimensions shown in inches (mm).