

2023/2024

**COCHRANE**  
**SUPPLY**

# BURNER BOOK



CONTROLS FOR COMMERCIAL & INDUSTRIAL BURNER BOILER APPLICATIONS



[WWW.COCHRANESUPPLY.COM](http://WWW.COCHRANESUPPLY.COM)

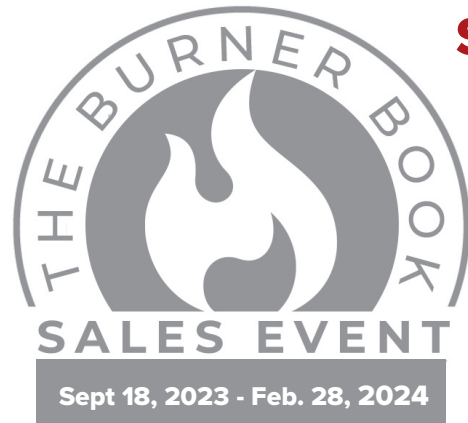
**TABLE OF CONTENTS**

Honeywell FSG Relays, Display Modules, Flame Signal Amplifiers .....1-2  
 Honeywell Pilot Assemblies, Flame Sensors, Pressure Switches .....3  
 Honeywell Gas Valves .....4  
 Siemens Flame Safeguard Controls, Scanners ..... 5  
 Siemens Combustion Controls, Valves, Switches..... 6  
 Fireye Primary FSG Relays.....7  
 Fireye Programmer FSG Relays, Flame Sensors..... 8  
 Fireye Combustion Controls..... 9-10  
 Veris Wet Differential Pressure Sensors..... 11  
 Asco Hydramotor Gas Valves..... 11  
 Phoenix Contact Niagara Controller..... 12  
 Yaskawa Matrix Drive ..... 12  
 Testo Combustion Analyzers..... 13  
 Seitron Emissions Analyzers ..... 13  
 Dungs & Antunes Gas Pressure Switches..... 14  
 Maxitrol Gas Pressure Regulators, Flame Modulation System ..... 15  
 Norgas Gas Pressure Regulators..... 16

- ACTi**  
*Video Surveillance & Analytics*
- Acuity Brands**  
*Lighting Controls*
- Altronix**  
*Security Power Solutions*
- ANT Technologies**  
*Cloud-Based Project & Service Tracking*
- Antunes**  
*Pressure Switches*
- Apollo (Air Products)**  
*Smoke Detectors & Accessories*
- ASCO**  
*Solenoid Valves & Actuators*
- ASI Controls**  
*Building Controls, BAS Software, & Field Components*
- Automation Components, Inc.**  
*BAS Sensors & Transmitters*
- AXIS Communications**  
*Video Surveillance*
- BAPI**  
*BAS Sensors & Transmitters*
- Barnes & Jones**  
*Steam Traps & Repair Parts*
- BASO Gas Products LLC**  
*Gas Valves, Pilots, Ignition Modules*
- Baud Rate .IO**  
*System Integrations and Vertical Solutions*
- Belimo**  
*Actuators, Control Valves & BAS Sensors*
- Bell & Gossett**  
*Pumps & Valves*
- Blue Ridge Technologies**  
*Lighting Controls*
- Cleveland Controls**  
*Pressure Switches*
- Connect-Air**  
*Wire & Cable*
- Contemporary Control Systems**  
*Networking & Controls*
- Crown Engineering**  
*Electrodes, Flame Rods & Probes*
- Cyber Power**  
*Power Protection Equipment*
- Danfoss**  
*Radiator Sensors & Valves*
- Dell**  
*Servers & PCs*
- Delta Electronics**  
*The Loytec L Products*
- Dent Instruments**  
*Energy Meters*
- Distech Controls**  
*Building Controls, BAS Software, & Field Components*
- Dongan Electric**  
*Ignition & Power Transformers*
- Dormakaba**  
*Door Locking Devices*
- Dwyer Instruments**  
*Sensors, Transmitters & Test Instruments*
- EasyIO**  
*Building Controls*

- Fireye**  
*Flame Safeguard & Integrated Scanners*
- Functional Devices**  
*RIB Relays, Current Sensors & Power Supplies*
- Hankinson**  
*Air Dryers*
- Heat Timer**  
*Boiler and Hot Water Controls*
- HID Global**  
*Card Readers & Solutions*
- Hoffman**  
*Air Vents*
- Honeywell Analytics**  
*Gas Detection*
- Honeywell Building Technology**  
*Building Controls, BAS Software & Field Components*
- HMS - Networks (Intesis)**  
*Protocol Gateways*
- Honeywell SINE**  
*Visitor Management Software*
- Honeywell Thermal Solutions**  
*Flame Safeguard & Combustion*
- ICM Controls**  
*Timers & Ignition Modules*
- IDEC**  
*Relays*
- IPVideo Corporation**  
*IoT Smart Sensing*
- Johnson Controls**  
*Building Controls, BAS Software, & Field Components*
- Kantech**  
*Tyco Security Products & Access Control*
- Klein Tools**  
*Hand Tools*
- KMC Controls**  
*Building Controls, Software, Field Components*
- KODE Labs**  
*Smart Building Software*
- KromAmericas**  
*Kromschroder Combustion Systems, Valves, Actuators*
- Lynxspring**  
*BAS Software and Building Controls*
- MA-Line**  
*Tools, Wiring Accessories & Fittings*
- Mag Daddy**  
*Magnetic J-Hooks, Bridle Rings, Cable Holders*
- Maxitrol**  
*Gas Regulators, Selectra & Gas Filters*
- MaxLine Solutions**  
*System Integration Drivers*
- McDonnell Miller**  
*Boiler Controls, Flow Switches & Valves*
- Milestone**  
*Video Surveillance*
- Neopsis**  
*C-Bus Integration Devices*
- Neptronic**  
*BAS Controls, Actuators & Valves*
- Niagaramods**  
*Reflow Graphics Package for Niagara*
- Norgas**  
*Gas Regulators & Meters*

- ONICON**  
*Flow & BTU Meters*
- Optigo Networks**  
*Networks & BACnet Networking Tools*
- Phoenix Contact**  
*Industrial Controls, Panel Accessories & Networking*
- Prolon Controls**  
*Light Commercial Building Controls*
- QuickLink Solutions**  
*System Integrations and Vertical Solutions*
- Resideo Genesis Cable**  
*Wire & Cable*
- Resideo (Honeywell Homes)**  
*Residential Comfort & Combustion*
- RLE Technologies**  
*Raised Floors & Airflow, Leak Detection, Monitoring/Integration*
- Safety Technology International, Inc. (STI)**  
*Emergency Buttons & Security Protection*
- Saginaw Controls**  
*Enclosures & Back Plates*
- Schneider Electric**  
*(Robertshaw & Barber Colman)  
Building Controls, Lighting & Field Devices*
- Setra Systems**  
*Humidity & Pressure Transducers*
- Siemens Combustion Controls**  
*Flame Safeguard & Combustion*
- Siemens**  
*Building Controls & Field Devices*
- Seitron Americas**  
*Combustion Analyzers*
- System Sensor**  
*Smoke Detector & Accessories*
- TCS Basys Controls**  
*Building Controls*
- Tekmar Controls**  
*Boiler Controls*
- Testo**  
*Combustion Analyzers*
- TOSIBOX**  
*VPN Solutions*
- Triatek**  
*Fume Hood Controls*
- Unity Manufacturing**  
*Enclosures and backplates*
- Vykon by Tridium**  
*Building Automation & Security Software*
- Vaisala, Inc.**  
*Sensing Devices*
- Valley Tool & Design**  
*Damper Accessories*
- Veris Industries**  
*Energy Management Solutions*
- Viconics**  
*Building Controls*
- Wattstopper by Legrand**  
*Lighting Controls*
- Weiss Instruments**  
*Temperature & Pressure Instruments*
- Yaskawa**  
*Variable Frequency Drives*
- YORK International**  
*Chiller and Service Parts*



**SHOP IN-STORE, EARN REWARDS!**

Earn prizes with every **IN-STORE** purchase of our Flame Safeguard products.

- Spend Over \$500** - Clip-on LED Mini Lantern/Flashlight
- Spend Over \$1,000** - Choose from Cochrane branded camo baseball hat or knit beanie
- Spend Over \$1,500** - Choose from Cochrane branded tactical knife or \$15.00 Amazon gift card
- Spend Over \$2,000** - Hydration Backpack



**MAKING OUR CUSTOMERS SUCCESSFUL SINCE 1967**

**PRIMARY FSG RELAYS**

**RM7890 Primary Controls**

Replaces RA890F,G,H. Requires Q7800 Subbase & R78 Amplifiers



RM7890A1015	Automatic Primary Relay
RM7890B1014	Automatic Primary Relay, Shutter Drive
RM7890B1048	Enhanced Primary with VPS**

**RM7895 Primary Controls**

Replaces R7795A,B—R4795A,D. Requires Q7800 Subbase, R78A Amplifiers & ST Purge Cards

RM7895A1014	Intermittent Primary Relay
RM7895B1013	Intermittent Primary Relay with Air Flow Switch Check
RM7895C1012	Interrupted Primary Relay
RM7898A1000	Enhanced Primary with VPS**

**RM7838A and B Semi-Automatic Primary Controls**

Replaces R4138. Requires Q7800 Subbase, R78 Amplifiers & ST Purge Cards

RM7838A1014	Semi-Automatic Primary Relay with Display
RM7838B1013	Enhanced Primary Relay with Display



**PROGRAMMER FSG RELAYS**

**RM7840 Programmer FSG Relay**

Replaces R4140. Requires Q7800 Subbase, R78 Amplifiers, ST Purge Cards

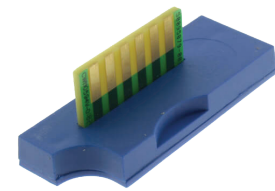
RM7840E1016	Relay Module, 4-Wire Modulation, Proven High/Low Fire, ESP*
RM7840G1014	Relay Module, 4-Wire Modulation, Proven Low Fire
RM7840L1018	Relay Module, 4-Wire Modulation, Proven High/Low Fire
RM7840M1017	Relay Module, On/Off, Proven Low Fire
RM7840L1075	Enhanced Programmer with Purge & VPS**

**RM7800 Programmer FSG Relay**

Replaces BC7000 (includes keypad). Requires Q7800 Subbase, R78 Amplifiers, ST Purge Cards

RM7800E1010	Relay Module with Keypad, 4-Wire Modulation, Proven High/Low Fire, ESP*
RM7800G1018	Relay Module with Keypad, 4-Wire Modulation, Proven Low Fire
RM7800L1012	Relay Module with Keypad, 4-Wire Modulation, Proven High/Low Fire
RM7800M1011	Relay Module with Keypad, On/Off, Proven High/Low Fire
RM7800L1087	Enhanced Programmer with Keypad & VPS**

\*ESP = Energy Savings Prepurge \*\*VPS = Valve Proving System



**PLUG-IN PURGE TIMER CARD**

Part No.	Prepurge Timing
ST7800A1005	2 seconds
ST7800A1013	7 seconds
ST7800A1021	10 seconds
ST7800A1039	30 seconds
ST7800A1047	40 seconds
ST7800A1054	60 seconds
ST7800A1062	90 seconds
ST7800A1070	2.5 minutes
ST7800A1088	4.0 minutes
ST7800A1096	6.0 minutes
ST7800A1104	9.0 minutes
ST7800A1112	12.0 minutes
ST7800A1120	15.0 minutes
ST7800A1138	22.0 minutes
ST7800A1146	30.0 minutes



**Wiring Subbase**

Use with RM7800, RM7840, RM7895, RM7838 Relay Modules

Part No.	Description
Q7800A1005	Panel Mount
Q7800B1003	Wall Mount

**S7800A2142 Keyboard Display Module**

Allows for programming the VPS and post purge. Provides current system status and first-out annunciation and system diagnosis using a five-row by 64-column readout. The KDM is part of the 7800 series of microprocessor-based burner controls for gas/oil/coal or combination fuel single burner applications.



**Electrical Ratings:**

- Voltage and Frequency: 13 Vdc peak full wave rectified (+20%/-15%).
- Power Dissipation: 7W maximum.
- VA consumption: 2 VA maximum.

**Environmental Ratings:**

- Operating Temperature: 0°F (-18°C) to +140°F (+60°C).
- Storage Temperature: -22°F (-30°C) to +158°F (+70°C).
- Humidity: 85% relative humidity continuous, noncondensing.
- Vibration: 0.5G environment

**Terminal Ratings:**

- Power: 13 Vdc peak full wave rectified. Earth Ground.

**FLAME SIGNAL AMPLIFIERS**

Part No.	Description
R7847A1025	Green, Rectification, 0.8 to 1 Second Response Time
R7847A1033	Green, Rectification, 2 to 3 Second Response Time
R7847B1023	Green, Rectification, Dynamic AMPLI-CHECKtm 0.8 to 1 Second Response Time
R7847B1031	Green, Rectification, Dynamic AMPLI-CHECKtm 2 to 3 Second Response Time
R7847C1005	Purple, Ultraviolet, use with Purple-Peeper, Dynamic AMPLI-CHECKtm 2 to 3 Second Response Time
R7848A1008	Red, Infrared, 2 to 3 Second Response Time
R7849A1015	Purple, Ultraviolet, use with Mini-Peeper, 0.8 to 1.0 Second Response Time
R7849A1023	Purple, Ultraviolet, use with Mini-Peeper, 2 to 3 Second Response Time
R7849B1013	Purple, Ultraviolet, use with Mini-Peeper, Dynamic AMPLI-CHECKtm 0.8 to 1 Second Response Time
R7849B1021	Purple, Ultraviolet, use with Mini-Peeper, 2 to 3 Second Response Time, Circuitry Self-Test
R7851B1000	White, Ultraviolet, Dynamic AMPLI-CHECKtm 2 to 3 Second Response Time
R7852A1001	Red /White, Infrared, 2 to 3 Second Response Time
R7861A1026	Purple, Ultraviolet, 2 to 3 Second Response Time Used With C7061 Detector
R7886A1034	Blue, Ultraviolet, Dynamic SELF-CHECK, 0.8 to 1 Second Response Time, Adjustable Sensitivity
R7886A1001	Blue, Ultraviolet, Dynamic SELF-CHECK, 2 to 4 Second Response Time, Adjustable Sensitivity



**PILOT ASSEMBLIES**

Rectification flame sensing can be used with Honeywell and Fireye amplifiers.

**Flame Rectifiers**

Flame Rod & Gas Pilot, for intermittent or interrupted ignition



Part No.	Description
Q179A1001	I Tip Style
Q179A1035	45° RH Tip Style
Q179A1050	T Tip Style
Q179A1092	45° T Tip Style

**FRS Flame Rods**

Standard Flame Rod, cut to length, heat before bending

Part No.	Description
FRS4-12	Flame Rod, 1/4" NPT Mount 12" Rod
FRS4-6	Flame Rod, 1/4" NPT Mount 6" Rod

**IGNITION TRANSFORMERS**

Part No.	Description
AO6-SA6	120 VAC Primary, 6000 VAC Secondary, 175 VA, 60 Hz, 1 Phase
A10-LA2	120 VAC Primary, 10000 VAC Secondary, 250 VA, 60 Hz
Q624A1014	120 VAC, 50/60 Hz

**INFRARED FLAME SENSORS**

Part No.	Description
C7915A1028	3/4" NPT Mount, 48" Lead Wire with Lead Sulfide Photocell, -20 to 125°

**ULTRAVIOLET FLAME SENSORS**

Part No.	Description
C7027A1023	MiniPeeper, 1/2" Mount, 8' Lead Wire Greenfield, 0 to 215°
C7027A1031	MiniPeeper, 1/2" Mount, 8' Lead Wire, -40 to 215°
C7027A1049	MiniPeeper, 1/2" Mount, 8' Lead Wire, 1/2" NPT Conduit, 0 to 215°
C7027A1064	MiniPeeper, 1/2" Mount, 24' Lead Wire, 1/2" NPT Conduit, -40 to 215°
C7027A1072	MiniPeeper, 1/2" Mount, 8' Lead Wire, 1/2" NPT Conduit, -40 to 215°
C7035A1023	1" Mount, 6' Lead Wire, Replaceable UV Tube, 0 to 250°
C7012E1112	1" NPT Mount, Dynamic Self-Check, 120V
C7012E1146	3/4" NPT Mount, Dynamic Self-Check, 208V
C7961E1014	1" NPT Mount, Dynamic Self-Check, 120V, Low Temp, -40 to 175°
C7061A1053	1" NPT Mount, Dynamic Self-Check, 120V, Low Temp, -40 to 175°



C7961E1014

**INTEGRATED PRESSURE SWITCHES**

Can be mounted on V5097 Valve

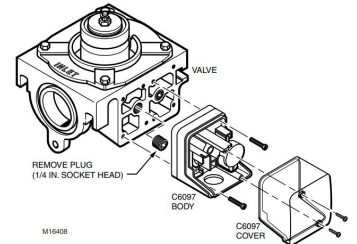
Part No.	Description
C6097A3012	3 to 21" WC, Manual Reset, NO, 1/4" NPT
C6097A3020	3 to 21" WC, Manual Reset, NO, Mounts on V5097 Valve
C6097B3028	3 to 21" WC, Manual Reset, NC, 1/4" NPT
C6097B3036	3 to 21" WC, Manual Reset, NO, Mounts on V5097 Valve
C6097A3004	.4 to 5" WC, Auto Recycle 1/4" NPT, Use with VPS



C6097A3012

**V5097A/B GAS VALVES**

Part No.	Description
V5097A1004/U	Small Body Low Pressure Integrated Valve; 3/4", 1", 1-1/4", 2"
V5097A1012/U	Large Body Low Pressure Integrated Valve; 2", 2-1/2", 3"
V5097B1002/U	Small Body Low Pressure Integrated Valve; 3/4", 1", 1-1/4", 2"
V5097B1010/U	Large Body Low Pressure Integrated Valve; 2", 2-1/2", 3"



**SOLENOID GAS VALVES**

The normally-closed gas valves are used for pilot or main gas shutoff applications.

**Normally-Closed Vent Valves**

Part No.	Description
V4295A1015	1/2" NPT, 2 psi
V4295A1023	3/4" NPT, 2 psi
V4295A1031	1" NPT, 2 psi
V4295A1049	1-1/4" NPT, 2 psi
V4295A1056	1-1/2" NPT, 2 psi
V4295A1064	2" NPT, 2 psi

**Normally-Open Vent Valves**

Part No.	Description
V4295S1005	3/4" NPT, 2 psi
V4295S1013	1" NPT, 2 psi
V4295S1021	1-1/4" NPT, 2 psi



V4295S1005

**DIAPHRAGM GAS VALVES**

24V	Pipe NPT	Pressure	120V	Pipe NPT	Pressure
V88A1659	3/4"	1/2 psi	V48A2151	3/4"	1/2 psi
V88A1618	1"	1/2 psi	V48A2169	1"	1/2 psi
V88A1626	1-1/4"	1/2 psi	V48A2177	1-1/4"	1/2 psi
V88A1634	1-1/2"	1/2 psi	V48A2185	1-1/2"	1/2 psi
V88A1709	2"	1 psi	V48A2243	2"	1 psi
V88A1717	2-1/2"	1 psi			



V48A2151

**REPLACEMENT PARTS**

**Gas Valve Actuators**

Part No.	Description
V4055A1064	120V, 5 psi, 26 Sec
V4055A1098	120V, 5 psi, 13 Sec
V4055D1019	120V, 5 psi, 13 Sec used w/proof of closure
V4062A1131	120V, 5 psi, 13 Sec Hi-Lo-OFF

**Pilot Valves**

Part No.	Description
V4046	120v - 1/8", 1/4" or 3/8"
V8046	24v - 1/8", 1/4" or 3/8"

**Main Gas Valves**

Part No.	Description
V5055	1"
V5055	1-1/4"
V5055	1-1/2"
V5055	2-1/2"
V5055	3"

## FLAME SCANNERS



QRA75



QRA4U



QRA2(1)



QRA10

Part No.	Description
QRA2(1) UV Scanner	U.V. side-viewing detector with flange and clamp used with LFL Burner Controls
QRA4U UV Scanner	QRA4U U.V. detector with NPSM thread conn. for LFL Burner Controls
QRA10 UV Scanner	U.V. detector with die cast aluminum housing normal sensor tube
QRA75 UV Scanner	U.V. self scanner for LMV



### LME7 BURNER CONTROL

The burner control LME7 is a microprocessor-based unit with matching system components for the control and supervision of forced draft burners of medium to high capacity. Ease of installation, programming and commissioning are incorporated into a reliable, field proven control.



### SQN7 CONTROL MOTOR

Designed to drive gas and air dampers for burners with small to medium capacities, the SQN7 Control Motor provides line voltage, floating control and optional feedback for low torque applications. Features include: line voltage floating or proportional control, optional feedback potentiometer, up to 22 in-lb torque, and an auxiliary switch.



### LDU11 VALVE LEAK TEST SYSTEM

The Siemens LDU11 gas valve leak test control checks for leakage through the shutoff valves prior to burner start-up and/or immediately after burner shutdown. The cost-effective, easy to install LDU11 adds a substantial degree of safety to any combustion system.



### LFL FLAME SAFEGUARD

With an incomparable record for safety and reliability, the globally approved LFL Flame Safeguard continues to be one of the most widely used flame safeguards around the world. Siemens LFL burner controls provide burner sequencing and flame monitoring for the supervision of individual gas, oil, or dual fueled burners.



### RWF50 TEMPERATURE CONTROLLER

The RWF50 is the perfect solution for controlling the temperature or pressure in oil-fired or gas-fired heating plants. Use the RWF50 either as a 3-position controller without angular positioning feedback, or as a continuous controller with analog output depending on the version. An external switch can be used to change to a 2-position controller for controlling 2-stage burners. The integrated thermostat function switches the burner on and off.

## SIEMENS LMV3

The LMV3 Linkageless Burner Management System sets an industry standard for cost-effective single or dual fuel burner controls. A fully-integrated linkageless flame safeguard system, the LMV3 provides improved performance, efficiency, and reliability. Effortless commissioning, programming, and installation allows for maximum ROI.

- Single and dual fuel versions
- Gas valve leak test on startup, shutdown, both or neither
- Proof of closure switch monitoring
- Programmable overlap of the pilot and main gas valves
- Programmable stops to pause startup sequence in: pre-purge, pre-ignition, pilot ignition, and main flame
- Adjustable purge timing up to 60 minutes



## SIEMENS LMV5

The LMV5 Linkageless Burner Management System is a fully-integrated system that is not only easy to install and operate, but also provides improved burner performance and efficiency while ensuring safe operation.

- Fuel to air ratio curve can easily be adjusted at any point in the firing rate
- 15 programmable points, with 4 independent positions, including pre-purge, ignition, post-purge and standby
- User friendly menu system for fast programming, commissioning
- Worldwide approvals and technical support



## ACTUATORS AND VALVES

Designed to install faster, operate safer, and deliver proven reliability, Siemens VG Series Single and Double Gas Valves combine with SKP Series Electro-Hydraulic Actuators to provide gas safety shutoff, constant pressure regulation, and air/gas ratio control.

Providing gas safety shutoff control for industrial and commercial burner applications, all SKP Actuators deliver reliable and safe on-off control:

- Proof-of-Closure (POC) Over Travel to ensure safety
- Modular design and quick connect wire terminals for fast installations
- Extremely low 13.5 VA power consumption

SKP Actuators	Description
SKP15.011U1	On/Off Safety Shut Off Valve Actuator
SKP25.011U1	On/Off Safety Shut Off Valve Actuator w/ (SPDT) Proof Of Closure Switch

VG Series Gas Valves are available in the following sizes:

- 1-1/2 to 3" threaded double valves
- 4 to 6" flanged double valves
- 1/2 to 3" threaded single valves

VG Series Gas Valves	Description
VGG10.254U	1" Gas Valve Body
VGG10.404U	1-1/2" Gas Valve Body
VGG10.504U	2" Gas Valve Body
VGG10.654U	2-1/2" Gas Valve Body
VGG10.804U	3" Gas Valve Body



## QP PRESSURE SWITCHES

The QP Pressure Switch is available in a variety of pressure ranges and can be easily automatically or manually reset.

Part No.	Description	Part No.	Description
QPH31.050M00	High Pressure Switch 2-20" wc Manual Reset	QPL31.010M00	Low Pressure Switch 1/2-4" wc Manual Reset
QPH31.150M00	High Pressure Switch 10-60" wc Manual Reset	QPL31.050M00	Low Pressure Switch 1-20" wc Manual Reset
QPH31.050A00	High Pressure Switch 2-20" wc Auto Reset	QPL31.010A00	Low Pressure Switch 1/2-4" wc Auto Reset

**PRIMARY FSG RELAYS**

**M-Series II**  
Replaces UVM & TFM



**M-Series II Chassis**

Part No.	Description
MC120	120 VAC, Standard
MC120R	120 VAC with Remote Reset Capability

**M-Series II Programmer Modules**

Part No.	Description
MP100	Relight Function
MP230	Selectable Recycle/Non-Recycle Function, Trial Flame Ignition and Purge Timing

**M-Series II Amplifier Modules**

Part No.	Description
MAUV1	Ultraviolet, 2-4 Second Response Time
MAUV1T	Ultraviolet, 0.8 Second Response Time
MART1	Flame Rod, 2-4 Second Response Time
MART1T	Flame Rod, 0.8 Second Response Time

**MicroM Series**  
Replaces UVM, TFM, M-Series II



**MicroM Series Chassis**

Part No.	Description
MEC120	VAC with Standard Plug-in Board

**MicroM Series Programmer Modules**

Part No.	Description
MEP100	Relight Operation, 10 Second, PTFI
MEP230	Selectable Purge, PTFI Timing, Recycle or Non-Recycle Post Purge, Prove Air Open at Start

**MicroM Series Amplifier Modules**

Part No.	Description
MEUV1	Ultraviolet, 0.8 Second Response Time
MEUV4	Ultraviolet, 3 Second Response Time
MERT1	Flame Rod, Photocell, 0.8 Second Response Time
MERT4	Flame Rod, Photocell, 3 Second Response Time



61-3060

**Subbases for Both Micro M and M-Series II**

Part No.	Description
61-3060	Surface Mounting, Closed
61-5042	Cabinet Mounting, Open

**PRIMARY FSG RELAY CROSS-REFERENCE**

MicroM Replacement from old M-Series and M-Series II

M-Series Assembly	M-Series II			MicroM Series		
	Chassis	Amplifier	Programmer	Chassis	Amplifier	Programmer
UVMID	MC120	MAUV1T	MP100	MEC120	MEUV1	MEP100
UVM1F	MC120	MAUV1	MP100	MEC120	MEUV4	MEP100
TFM1D	MC120	MART1T	MP100	MEC120	MERT1	MEP100
TFM1F	MC120	MART1	MP100	MEC120	MEUT4	MEP100
UVM2	MC120	MAUV1	MP230	MEC120	MEUV1	MEP230
TFM2	MC120	MART1	MP230	MEC120	MERT4	MEP230
UVM3	MC120	MAUV1	MP230	MEC120	MEUV4	MEP230
TFM3	MC120	MART1	MP230	MEC120	MERT4	MEP230

**PROGRAMMER FSG RELAYS**

Flame Monitor® Control



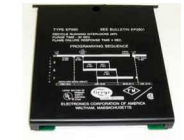
E110



ED510



EP160



EIR1

Flame Monitor Chassis

Part No.	Description
E110	Flame Monitor Control, Standard, w/Dust Cover & Screw

Flame Monitor Display

Part No.	Description
ED510	Display Module, LCD Display w/Keypad, 2 Line x 16 Characters, For Programmers and Primary Relays

Flame Monitor Programmer Modules

Part No.	Description
EP160	30 Second Purge, 10 & 15 Second Trial for Ignition, 4 Second Response Time, Non-Recycle, Modulation
EP260	30 Second Purge, 10 & 15 Second Trial for Ignition, 4 Second Response Time, Recycle, Modulation
EP380	30 Second Purge, 5 & 10 Second Trial for Ignition, 4 Second Response Time, Recycle, On-Off
EP390	90 Second Purge, 5 & 10 Second Trial for Ignition, 4 Second Response Time, Recycle, On-Off

Flame Monitor Amplifier Modules

Part No.	Description
EUV1	Ultraviolet Amplifiers
E1R1	Infrared Amplifier (High Sensitivity)
ERT1	Flame Rod Amplifier

Flame Monitor D & E Series Subbases

Part No.	Description
60-1386-2	Closed Base
60-1466-2	Open Base



48PT2-1007

**INFRARED FLAME SENSORS**

Fireye Part Number	Description
48PT2-1003	1/2" NPT Straight Mount, 8' Lead Wire
48PT2-1007	1/2" NPT Straight Mount, 4' Lead Wire
48PT2-9003	1/2" NPT Angle Mount, 8' Lead Wire
48PT2-9007	1/2" NPT Angle Mount, 4' Lead Wire

*\*Older Style: P-Series Controls (e.g. 28FJ8, 29RF5)*



45UV5-1009

**ULTRAVIOLET FLAME SENSORS**

Fireye Part Number	Description
UV1A6	1/2" NPT Mount, 6' Lead Wire, Non-Replaceable Tube
UV1AL-6	1/2" NPT Mount, 6' Lead Wire, Front View
UV1A-3	1/2" NPT Mount, 3' Lead Wire
UV1AL-3	1/2" NPT Mount, 3' Lead Wire, Front View
UV2	3/8" NPT Mount, 3' Lead Wire, Non-Replaceable Tube
45UV5-1009	1" NPT Mount, 8' Lead Wire, Self-Checking, Explosion Proof



**FIREYE INTEGRATED SCANNERS**

**Simplicity 65UV5**

The Fireye 65UV5 flame scanner is a microprocessor-based flame scanner utilizing an ultraviolet tube-type sensor and an electro-mechanical self-checking shutter mechanism. The Fireye 65UV5 flame scanner incorporates an internal flame relay with a fixed ON/OFF threshold thereby eliminating the need for an external flame amplifier.



65UV5

**Phoenix 85UVF**

The Fireye Phoenix type 85UVF/IRF flame scanners are microprocessor-based devices utilizing a solid state flame detection sensor. The Phoenix flame scanners incorporate an internal flame relay with automatically set ON/OFF thresholds, thereby eliminating the need for a remote flame amplifier or flame switch.



85UVF

**InSight 95IR/95UV/95DS**

The Fireye InSight Type 95IR, 95UV, and 95DS flame scanners are microprocessor-based flame scanners utilizing solid state infrared (IR), ultraviolet (UV) or dual (IR and UV) sensors. The Fireye InSight Type 95 flame scanners incorporate an internal flame relay with adjustable ON/OFF thresholds, thereby eliminating the need for a remote flame amplifier.



InSight

**FIREYE BURNERLOGIX**

Note: The Phoenix QDWR models with electrical quick-disconnect have replaced the original WR models equipped with 10 feet of captive cable. The QDWR models (with 59-546-X cables) are also suitable for use in Class I Division 2 hazardous areas, thereby eliminating the need for the "EXWR" models.

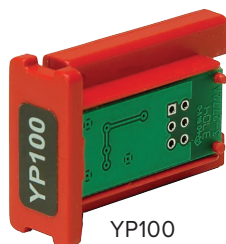
Chassis/Amplifier	120 VAC, 50/60 Hz   YB110UV, YB110UVSC, YB110IR, YB110FR, YB110DC, ZB110 230 VAC, 50/60 Hz   YB230UV, YB230UVSC, YB230IR
Programmer Module	YP100, YP102, YP200, YP202, YP300, YP302, YP113, YP138, YP118
Display Module	BLV512 - Vacuum Fluorescent, BLL510 - Liquid Crystal
Wiring Base	60-2814-1   Open Bottom, Cabinet Mount 60-2812-1   Closed Bottom, Conduit Knockout
Wiring Base	60-2810-1   Pre-Wired, 4-Foot, Color-Coded



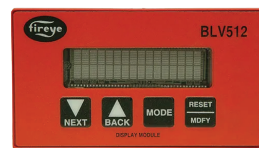
YB110 Chassis  
w/ Optional  
BLV512 Display



ZB110 Chassis  
W/ Optional  
BLL510 Display  
and Programmer



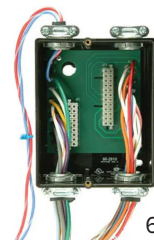
YP100



BLV512



60-2814-1

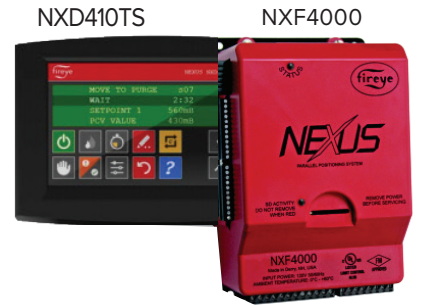


60-2810-1

**FIREYE NEXUS - Integrated Flame Safeguard Capabilities!**

**NXF4000**

The NXF4000 is an electronic parallel positioning and O2 trim combustion control system built into a compact, flexible user-configurable package. This controller will support sequencing/lead lag and up to 10 servo motors.



NXD410TS

NXF4000

**PPC6000**

The Fireye PPC6000 is a state of the art stand-alone parallel positioning system for all types of liquid or gaseous fuel fired combustion systems. When combined with a Fireye flame safeguard system such as the Fireye BurnerLogix control, the PPC6000 offers the most compact and advanced parallel positioning system available.



PPC4000

**PPC4000**

The PPC4000 is an electronic parallel positioning and O2 trim combustion control system built into a compact, flexible user-configurable package. This controller will support sequencing/lead lag and up to 10 servo motors.



FX04-1, FX20-1, FX50-1  
Servo Motors

**NXD410 Keypad Display**

The NXD410 is a full text-based LCD display. Fifteen keys, including fast-access, one-push keys, provide information at a glance.

**Servo Motors**

Three servo motor sizes are available for the PPC4000. High accuracy 0.1 degree over 90 degrees resolution.

**O2 Probe**

Fireye's oxygen probe provides stack temperature and oxygen measurement. Available in three lengths with a low cost replaceable sensor. Oxygen trim automatically and continuously compensates for all the variables that affect efficient combustion.

NXCES02



**GET EXPERT ADVICE!**

Cochrane Supply has dedicated Flame Safeguard and Combustion Controls experts with over 60 years of combined FSG industry experience.

Contact our combustion specialists today!  
Paul Wisnieski: [pwisnieski@cochrane.com](mailto:pwisnieski@cochrane.com)  
Chris Myers: [cmyers@cochrane.com](mailto:cmyers@cochrane.com)



**VERIS WET DIFFERENTIAL PRESSURE SENSORS**

Part Number	Description
PWLX04S	12 to 30 VDC/24 VAC Input 4 to 20 mA/0 to 5 V/0 to 10 V Output Wet Media Differential Pressure Transducer with LCD Display, 0 to 100 psig
PW2LX04S	12 to 24 VDC Input 4 to 20 mA Output Wet Media Differential Pressure Transducer with LCD Display, 0 to 100 psig
PWRLX04S006A	15 to 30 VDC/24 VAC Input 4 to 20 mA/0 to 5 V/0 to 10 V Output Wet Media Differential Pressure Remote Transducer with 6 ft Armored Cable, 0 to 100 psig
PWXX04S	12 to 30 VDC/24 VAC Input 4 to 20 mA/0 to 5 V/0 to 10 V Output Wet Media Differential Pressure Transducer, 0 to 100 psig



**ASCO HYDRAMOTOR GAS VALVES**

The normally-closed aluminum body valves provide main line gas shutoff and control for boilers, furnaces and ovens. Also with flanged cast iron body for pipe sizes up to 6”.

**Actuators**

AHD Series Actuators have been replaced with the E Series. The valve body must be changed as the new style will not fit on the old body style.

Part No.	Description
AH2E102A4	On/Off Slow Opening
AH2E112A4	On/Off Fast Opening
AH2E112S	On/Off, Fast Open, Proof of Closure
AH4E112S4	Hi/Low/Off, Fast Open, Proof of Closure
AH4E112A4	Hi/Low/Off, Fast Open

**Valve Body**

Standard for On-Off Applications

Part No.	Description
V710EBS	3/4”
V710FBS	1”
V710HBS	1-1/2”
V710JBS	2”
V710KBS	2-1/2”
V710LBS	3”



AH/V710

**Vent Valves**

2-way, Normally Open, 120V

Part No.	Description
8215G033	3/4”
8215C053	1”
8215C063	1-1/4”
8215C073	1-1/2”
8215C083	2”



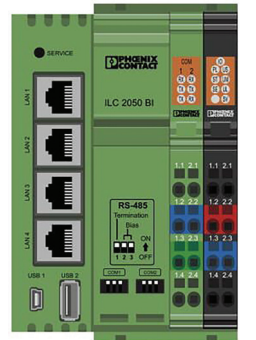
8215G033

**PHOENIX CONTACT ILC 2050 BI**

The ILC 2050 BI is a Niagara-based controller that is ideal for mission-critical applications, including boiler rooms. It is compatible with the existing Niagara workbench used to program any Niagara controller. Its I/O is easily discoverable within the Niagara workbench with free rivers specific to this controller.

The ILC 2050 BI includes the following features:

- Industrially-graded hardware
  - UL 508 certification
  - Shock-and-vibration testing
  - I/O port-to-port isolation
- Dense I/O expandability in a small footprint
- Modularity of I/O for mixing and matching signals as needed
- Time-optimized engineering using the Niagara 4 framework
- Support for all the main communication protocols used in building infrastructure automation
- Planning, engineering, and visualization in the Java-based Niagara 4 framework
- Easy extension of the Niagara 4 framework with self-programmed functions
- Four LAN, two USB, and two RS-485 interfaces are integrated
- Safe and reliable intelligent safety solutions protect personnel and machinery, and ensure high system availability



PWLX04S

**YASKAWA MATRIX DRIVE**

The HV600 variable-speed drive (3-250 HP) is engineered for use in HVAC building automation applications requiring reliable motor control. The HV600 features your choice of IP20/UL Type 1, IP55/UL Type 12, or IP20/Protected Chassis protection classes. Every HV600 comes with HVAC application-specific software presets, a Hand-Off-Auto LCD keypad, a high-visibility Status Ring for quick visual indication of drive status, and a real-time clock for system accuracy.

- Simple steps for efficient commissioning
- DriveWizard® Mobile app for drive management on smart mobile devices
- Safe programming without main three-phase power
- Timer controls for starting, stopping, and speed changes
- Built-in building automation protocols
- Emergency Override for occupant safety in fire events

The Z1000U Matrix Drive incorporates matrix technology to directly convert input AC voltage to output AC voltage. The drive is ideally suited for HVAC applications providing ultra-low harmonic distortion, energy savings, and serviceability in a space-saving design. The Z1000U HVAC Matrix Drive was honored with the Product of the Year Award by Consulting-Specifying Engineer Magazine.



HV600



Z1000U



**Next-Gen Testo 300 Pro - Commercial Combustion Analyzer**

**300 Combustion Analyzer**

The user-friendly and highly efficient testo 300 with smart-touch technology has numerous advantages, including but not limited to:

**FEATURES:**

- Operation via smart-touch - The smart-touch display responds immediately without any delay, allowing intuitive operation.
- Emailing of reports - The testo 300 enables the convenient creation of documentation directly on site, and the dictation function even saves you typing in the process. Send reports immediately via Wi-Fi.
- Keep an eye on all measuring values - You can see the system's parameters right away on the large 5" HD display.
- Get the results faster - Clearly structured menus for all relevant measurements are already stored in the measuring instrument and guide you efficiently through the application.
- Completely worry-free - It has quality sensor technology, measures high CO values up to 30,000ppm and comes standard with the longest warranty in the industry.



**SEITRON AMERICAS EMISSIONS ANALYZERS**

**S1500-P Portable Combustion Analyzer with Built-In Printer**

S1500-P Analyzer with O2, CO, CO2, Efficiency, Excess Air, Draft, Pressure, Temp, Rechargeable Battery and AC Plug, 12" (300mm) Probe with 5' (1.5m) Dual Hose, ABS Case, Calibration Certificate, Operating Manual, Cheat Sheet, Water Trap, Paper Roll, 2000 Internal Data Storage, PC Software, Bluetooth TM Connectivity, Differential Pressure Manometer Kit (1 Hose), Automatic Outdoor Air Temperature Saving for ALL 90%+ Systems and Condensing Systems for TRUE Efficiency Calculations + iOS and Android App Included.



S1500-P

**S4500-3 Portable Commercial/Industrial Emissions Analyzer**

S4500-3 Analyzer with O2, CO, Standard NO/NOx Gas Sensors, Upgradable to 4th Gas Sensor. Efficiency, Excess Air, Draft, Pressure, Temp, Rechargeable Battery and AC Plug, 12" (300mm) Probe with 5' (1.5m) Dual hose, ABS Case, Calibration Certificate, Operating Manual, Cheat Sheet, Water Trap, Paper Roll, 2000 Internal Data Storage, PC Software, Bluetooth TM Connectivity, Differential Pressure Manometer Kit (1 Hose), Automatic Outdoor Air Temperature Saving for ALL 90%+ Systems and Condensing Systems for TRUE Efficiency Calculations + iOS and Android App Included.



S4500-3

**Novo Portable Combustion Analyzer**

The Novo Combustion Analyzer is designed to make combustion analysis quick and intuitive. Robust, reliable, precise. The Novo inherits the tradition of the Seitron analyzers and joins it with renewed software and hardware in order to offer a device easier to use. Main Features: With or Without Build-In Printer, 7" Touch Display for Easy Menu Navigation, Up to 4 Gas Sensors Including Low NOx, Long-Life O2 Sensor and High-Range CO With Dilution Pump, Dedicated Probe With One Simple Connection, Integrated Water Trap with LED Backlight for Easy Maintenance, Simultaneous Measurement of Gas and Combustion Results, Dual Range Sensor Technology, and More.



Novo Series

**DUNGS PRESSURE SWITCHES**

**FGPS-GAO-002**

GAO-A405 2-20 WC 217-092A  
GAO-A4-4-5 2-20 WC PIPE MT GAS SW NEMA4  
HI OR LOW AUTO RESET UL CSA FM

**FGPS-GAO-1260**

GAO-A4-4-6 12-60 WC 217-093A  
GAO-A4-4-6 12-60 WC PIPE MT GAS SW NEMA4  
HI OR LOW AUTO RESET UL CSA FM

**FGPS-GML-0120**

GML-A4-4-4 1-20 WC 217-340A  
GML-A4-4-4 1-20 WC PIPE MT GAS SW NEMA4  
LOW MAN RESET UL CSA FM

**FGPS-GMH-0120**

GMH-A4-4-4 1-20 WC 217-326A  
GMH-A4-4-4 1-20 WC PIPE MT GAS SW NEMA4  
HIGH MAN RESET UL CSA FM

**FGPS-GMH-1260**

GMH-A4-4-6 12-60 WC 217-327A  
GMH-A4-4-6 12-60 WC PIPE MT GAS SW NEMA4  
HIGH MAN RESET UL CSA FM

**FGPS-GML-1260**

GML-A4-4-6 12-60 WC 217-341A G  
ML-A4-4-6 12-60 WC PIPE MT GAS SW NEMA4



**ANTUNES SINGLE GAS PRESSURE SWITCHES**

Maximum Pressure: 15 PSI, Ambient Temperature: -40° to 170°F

Manual Reset High Range (HGP-G)		Auto Reset High Range (RHGP-G)	
8103116101	0.5" to 4" WC	8102111304	5" to 35" WC
8101111202	1" to 21" WC		
8101111303	5" to 35" WC		
Manual Reset Low Range (LGP-G)		Auto Reset Low Range (RLGP-G)	
8103116202	1" to 21" WC	8104116102	0.5" to 4" WC
8103116303	5" to 30" WC	8104116203	1" to 21" WC
		8104116304	5" to 30" WC



HGP-G/LGP-G

**ANTUNES DOUBLE GAS PRESSURE SWITCHES**

Maximum Pressure: 10 PSI, Ambient Temperature: -40° to 170°F

Manual Reset	Auto Reset	High Range	Low Range
804111701	804112101	2" to 16" WC	1" to 6" WC
804111702	804112102	5" to 28" WC	1" to 6" WC
804111703	804112103	10" to 50" WC	1" to 6" WC
804111704	804112104	2" to 16" WC	2" to 14" WC
804111705	804112105	5" to 28" WC	2" to 14" WC
804111706	804112106	10" to 50" WC	2" to 14" WC



HGP-A Replacements still available

**ANTUNES AIR DIFFERENTIAL VACUUM PRESSURE SWITCHES**

Maximum Pressure: 10 PSI, Ambient Temperature: -40° to 170°F

Part No.	Description	Range
801111301B	JD-2 Blue Spring	0.07" to 1.7" WC
801111302B	JD-2 Gray Spring	0.1" to 4" WC
801111303B	JD-2 Red Spring	0.1" to 24" WC

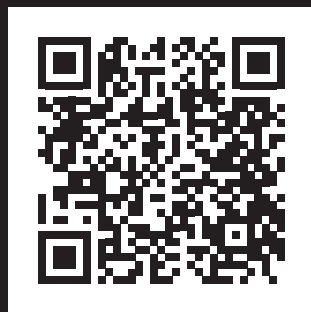


HLGP-A





Scan QR code to view all our conveniently located Cochrane Supply Branches.



[WWW.COCHRANESUPPLY.COM](http://WWW.COCHRANESUPPLY.COM)